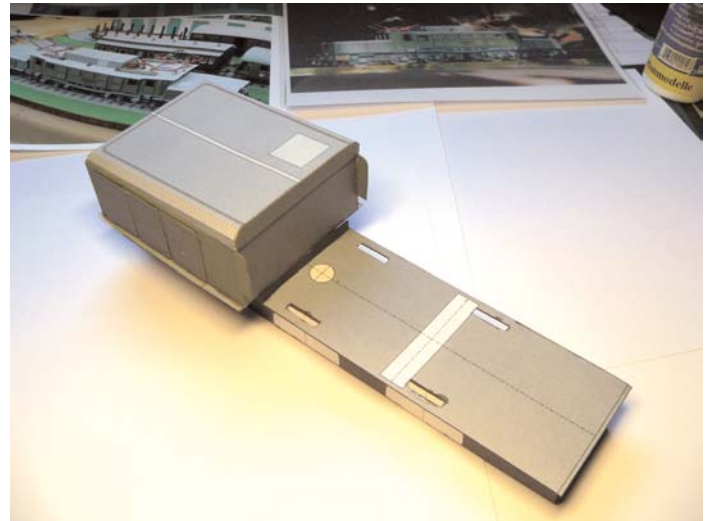
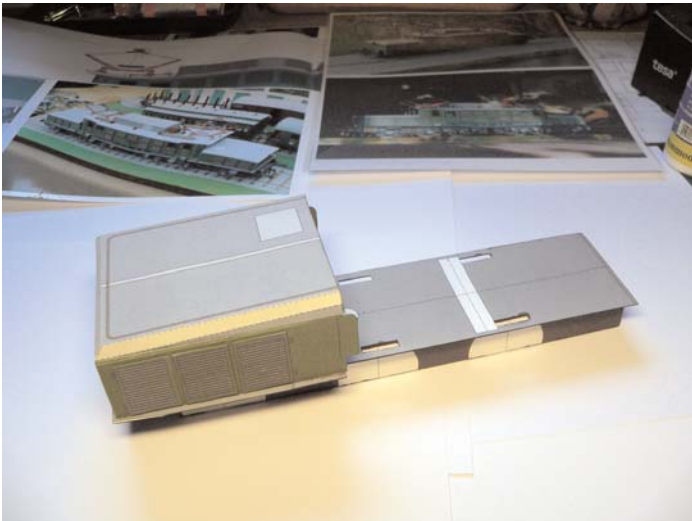


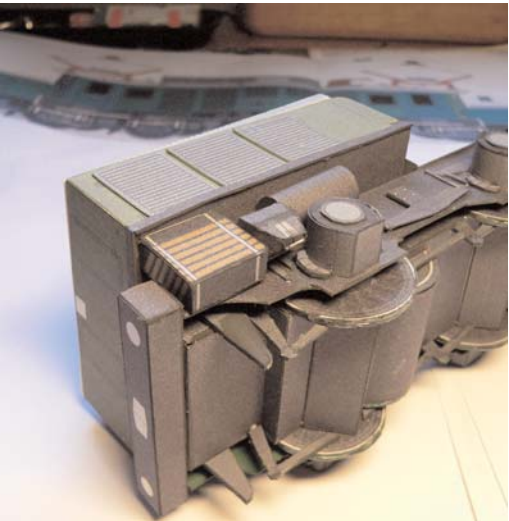
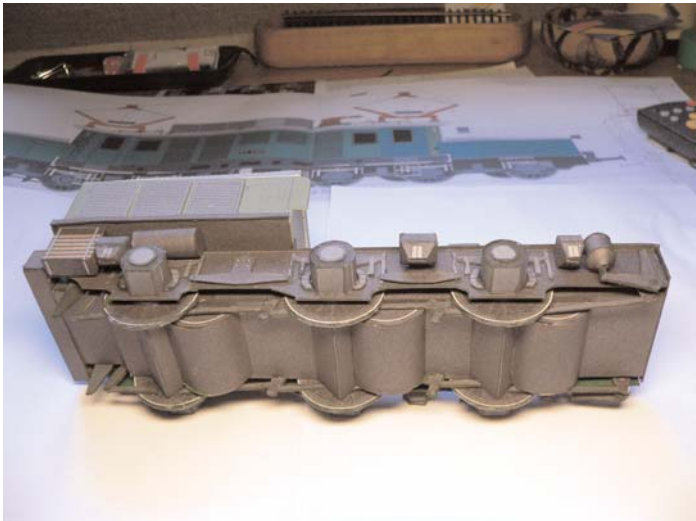
Elektrolokomotive E94

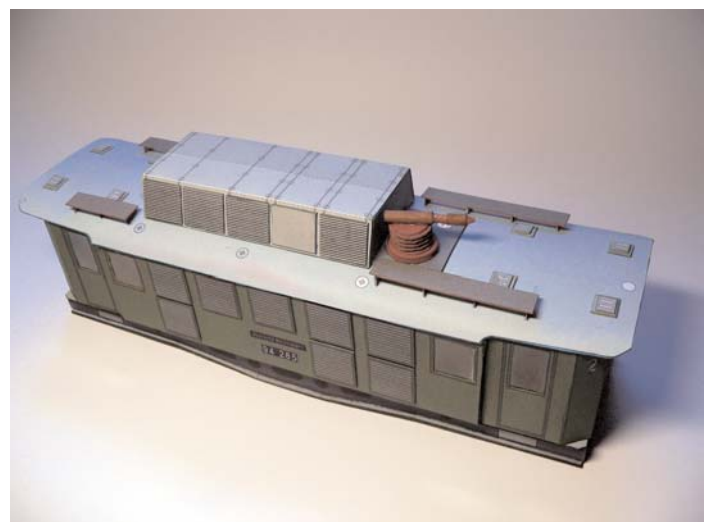
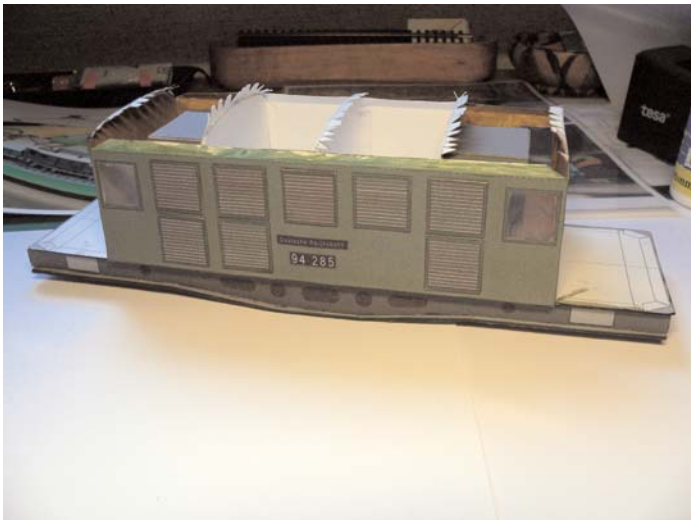
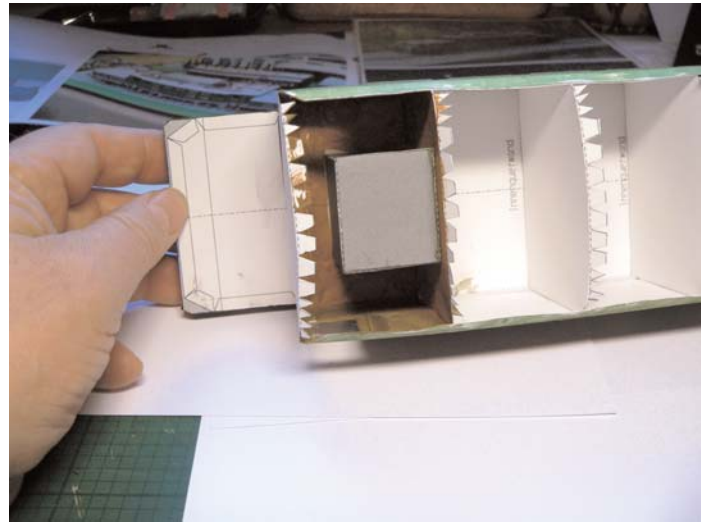
(DB 194 / DR 254) »Deutsches Krokodil«

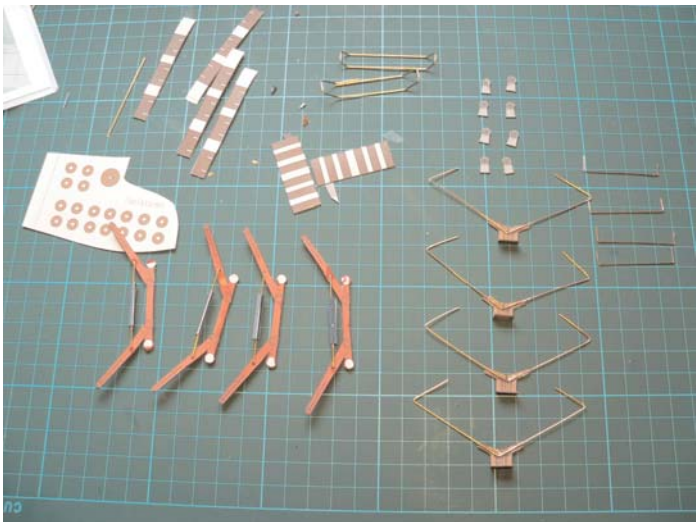
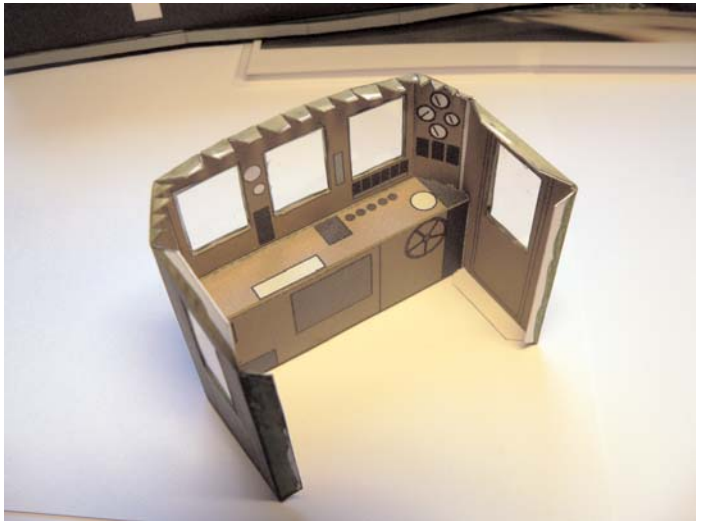
Modellbogen 1:38

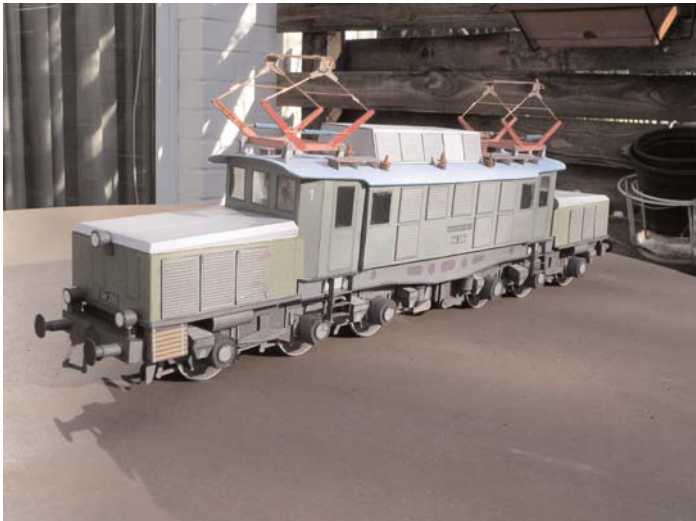
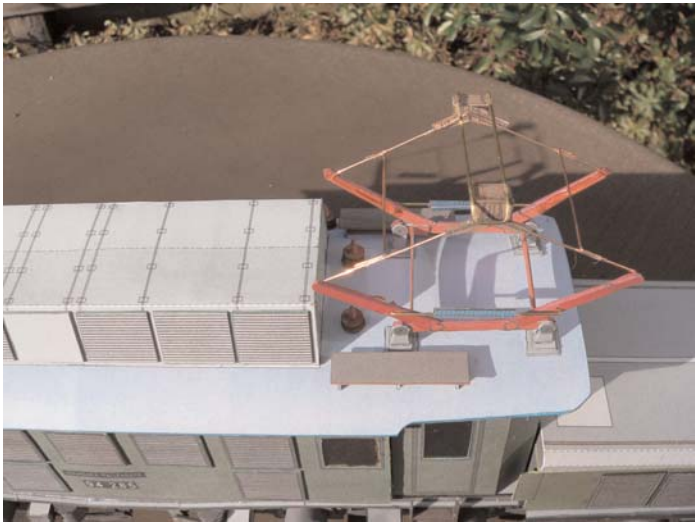
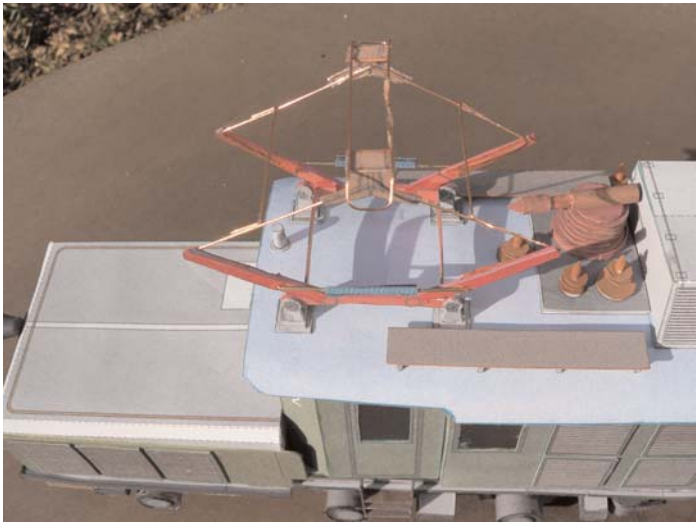
© 2005 Albrecht Pirling



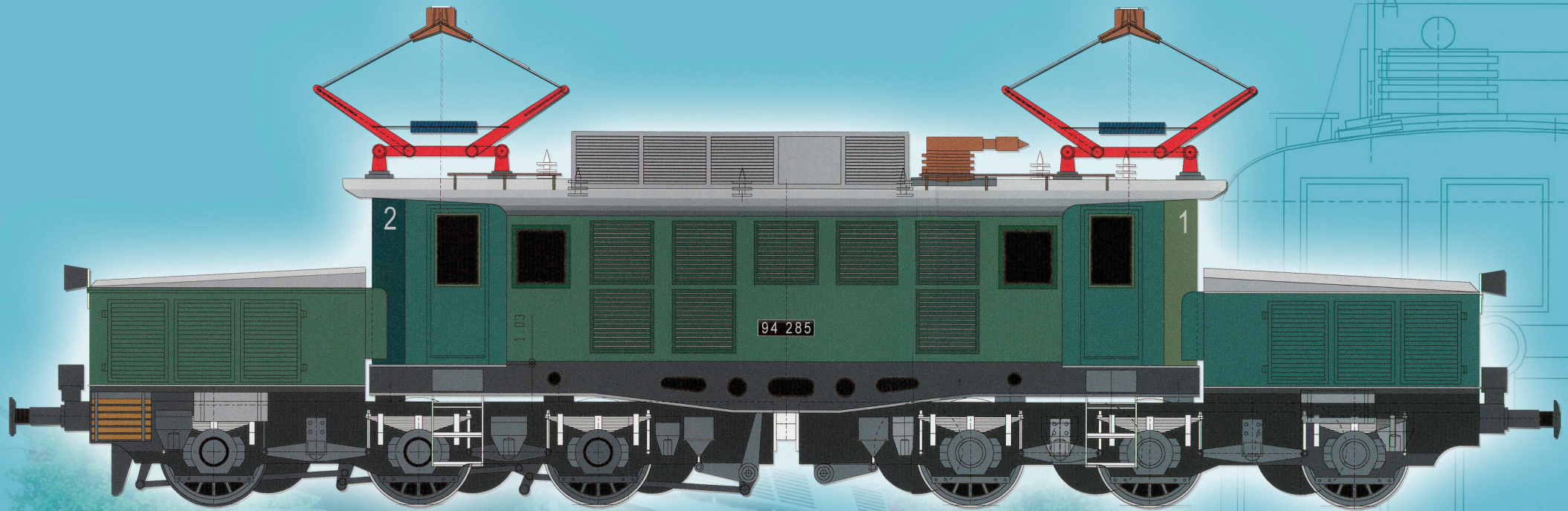












Elektro-Lokomotive E94 »Deutsches Krokodil«

(DB 194 / DR 254) © 2005 Albrecht Pirling / Rinteln
Modellbogen Maßstab 1:38



E94 279
Nürnberg-Gostenhof
25. Mai 2005

Lokomotive E94 279 in Nürnberg-Gostenhof Eigenes Foto Lizenz: GNU-FDL



254 056 am 24. Mai 2003
bei einer Ausstellung in Weimar.
Aufnahme: Steffen Mokosch
Lizenz: GNU FDL



Electric locomotive
german class 194 in Kranichstein, Germany
Author Hans-Peter Scholz Ulenspiegel
Date created 2005-05-08

Deckleisten Aufbaukasten



Fahrwerk

99

Puffbohle

Achse

Motor

Achse

Motor

Achse

Motor

Ende Außenrahmen

Rahmen-Unterteil

Unterseite hinten Rahmen-Overteil

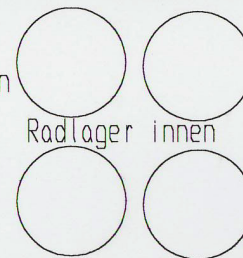
Ölkühler

Unterseite vorne Rahmen-Overteil

Sandkasten 2

Sandkasten 1

Umlaufkanten



Radlager innen

Rahmenaussteifungen

Deckleisten Aufbaukasten

1

Fahrwerk

94

Puffbohle

Achse

Motor

Achse

Motor

Achse

Motor

Ende Außenrahmen

Rahmen-Unterteil

Unterseite hinten Rahmen-Overteil

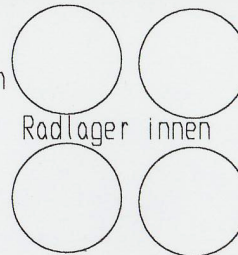
Ölkühler

Unterseite vorne Rahmen-Overteil

Sandkasten 2

Sandkasten 1

Umlaufkanten



Radlager innen

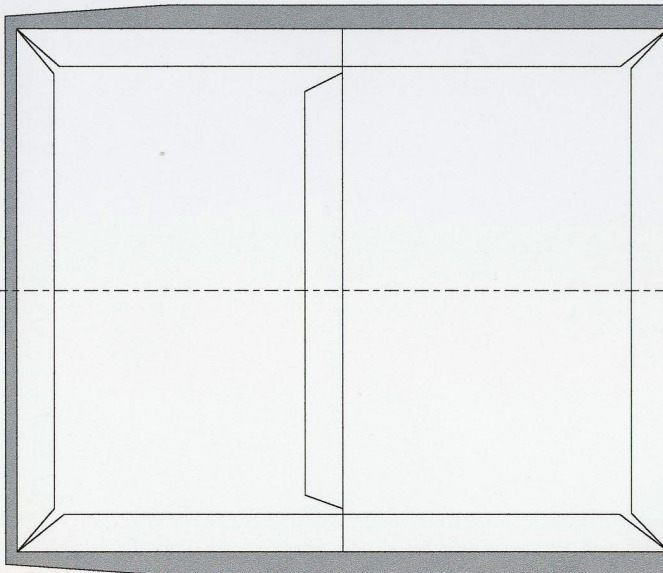
Rahmenaussteifungen

Fahrwerk

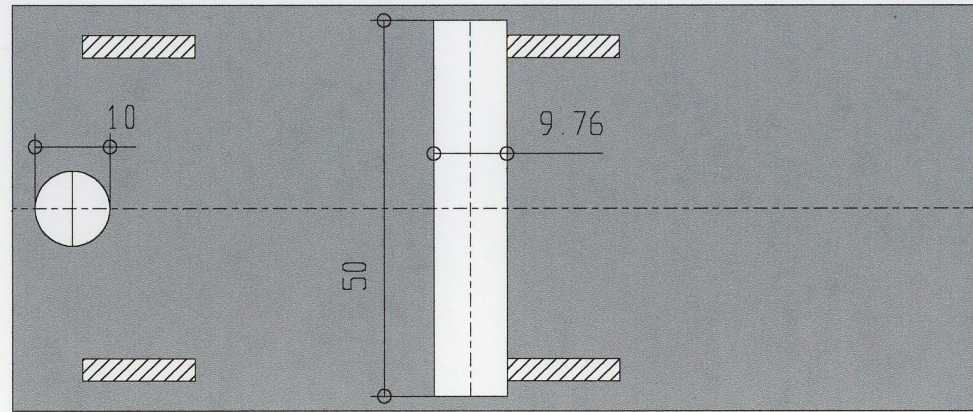
2A

Querschott

94

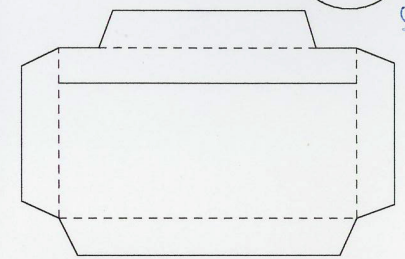
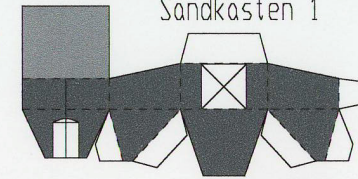
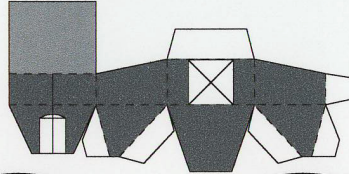


Rahmenaberteil Oberseite vorne

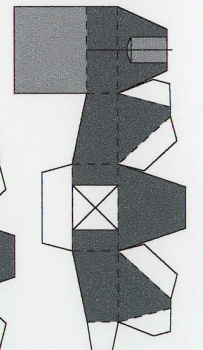


Rahmenaberteil Oberseite hinten

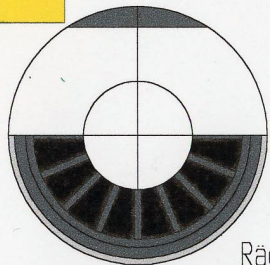
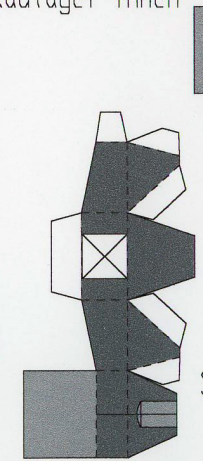
Sandkasten 1



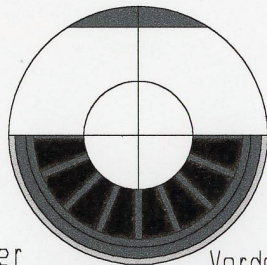
Radlager innen



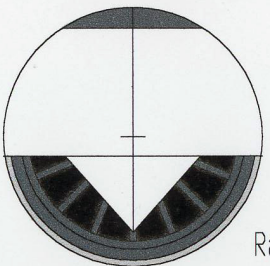
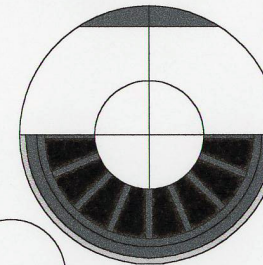
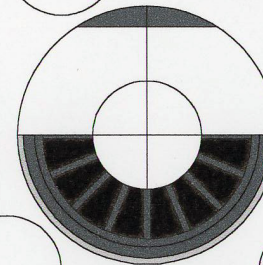
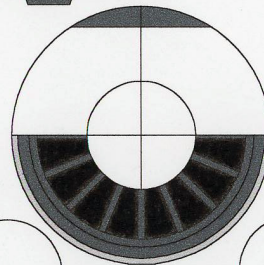
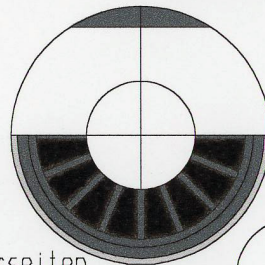
Sandkasten 1



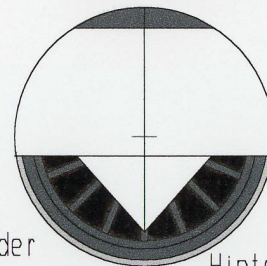
Räder



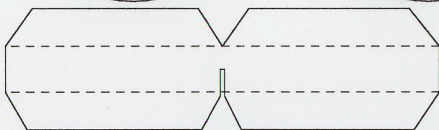
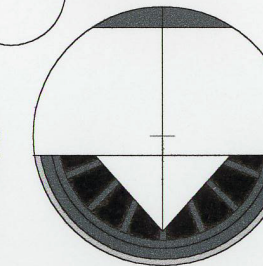
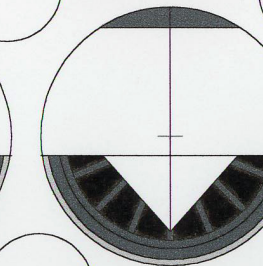
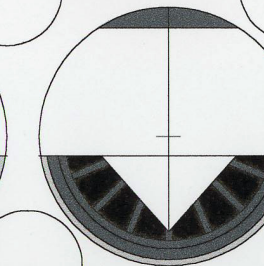
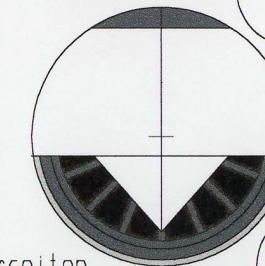
Vorderseiten



Räder

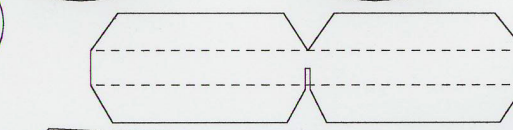
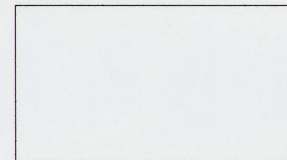
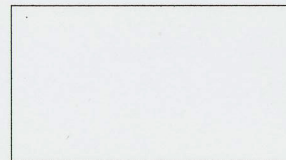
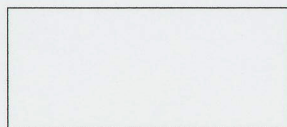
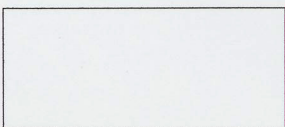


Hinterseiten

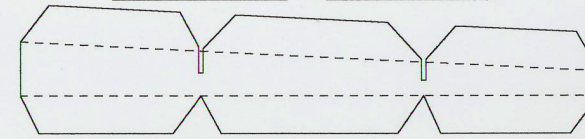


Aussteifung Vorbaudeckel

Verstärkungen Rahmenaussteifungen



Aussteifung Vorbaudeckel

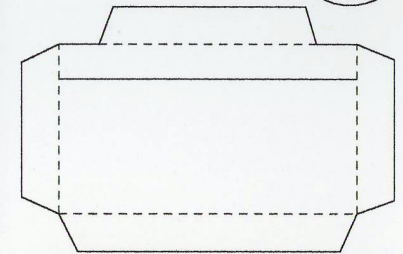


Fahrwerk

2

Querschott

94

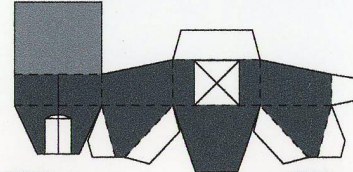


Radlager innen

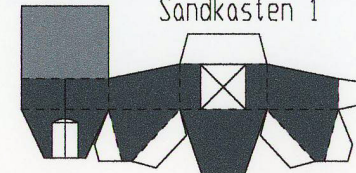


Sandkasten 1

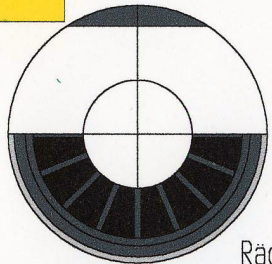
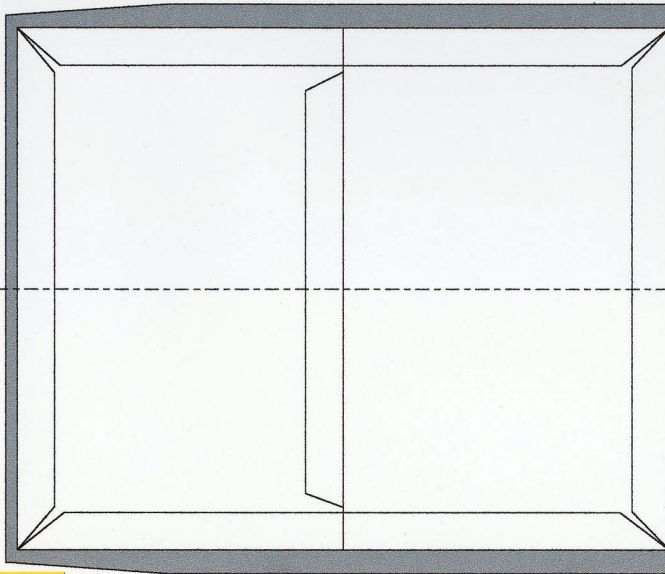
Rahmenoberteil Oberseite hinten



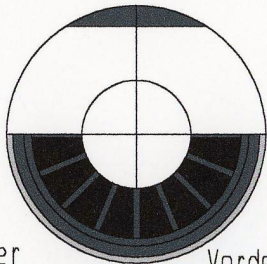
Sandkasten 1



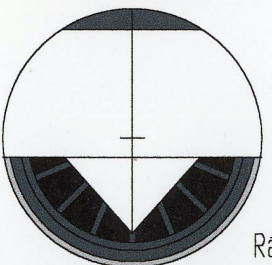
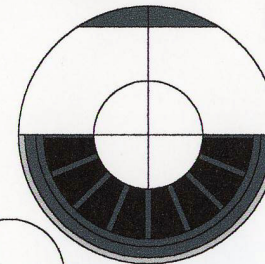
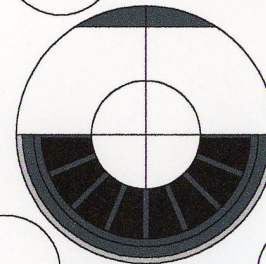
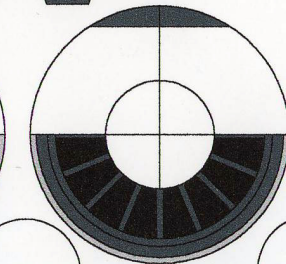
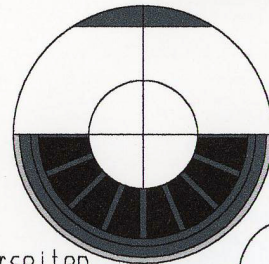
Rahmenoberteil Oberseite vorne



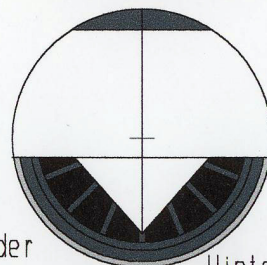
Räder



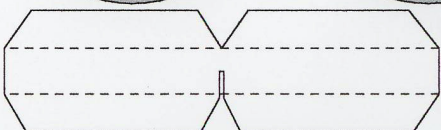
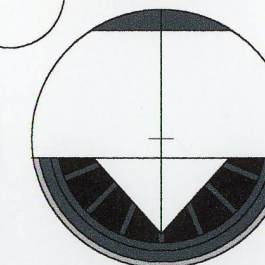
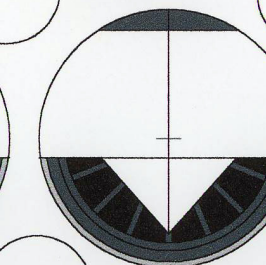
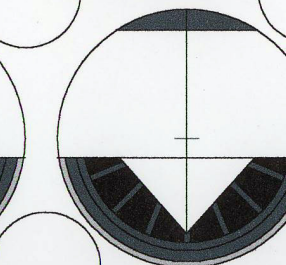
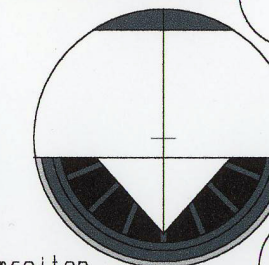
Vorderseiten



Räder

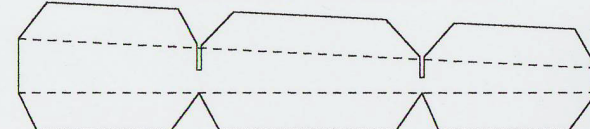
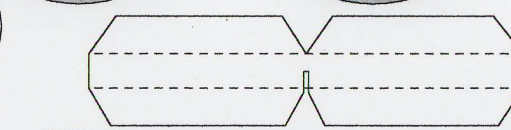
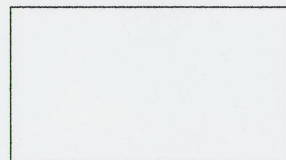
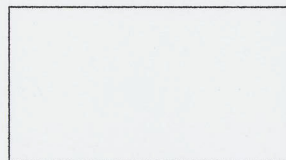
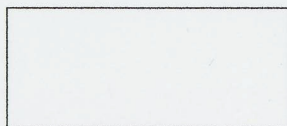
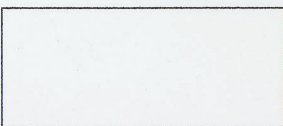


Hinterseiten

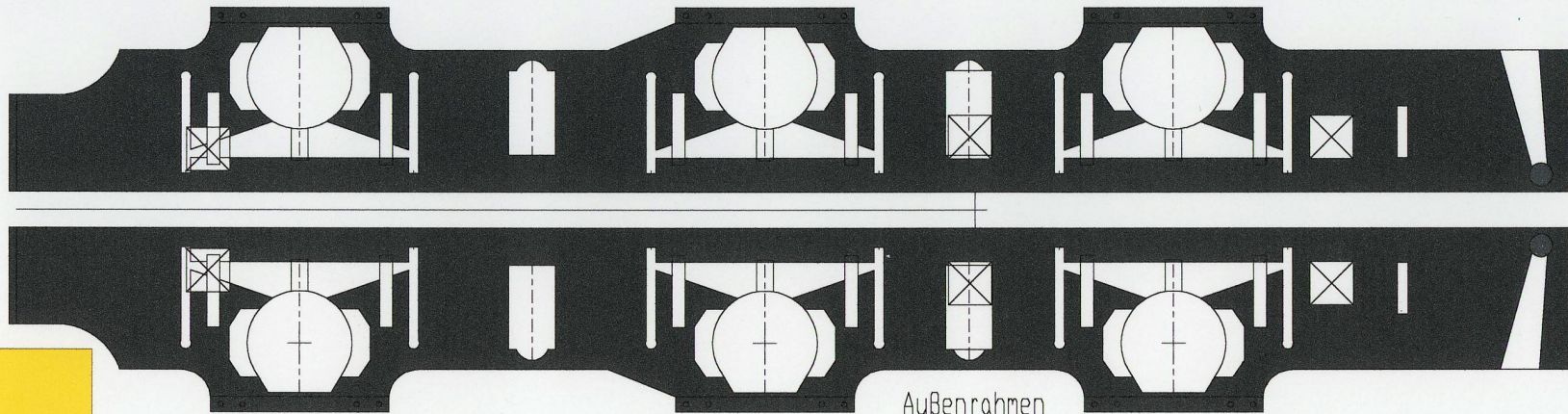


Aussteifung Vorbaudeckel

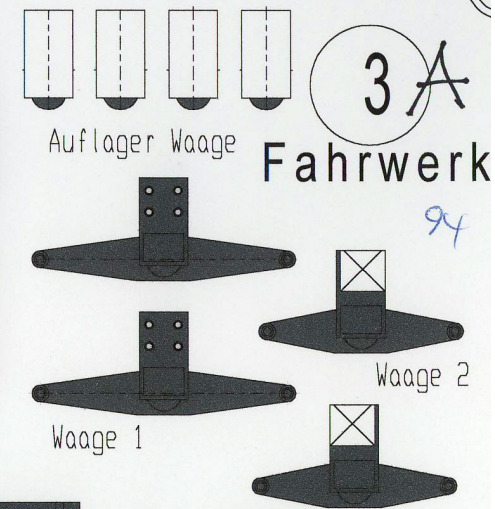
Verstärkungen Rahmenaussteifungen



Aussteifung Vorbaudeckel

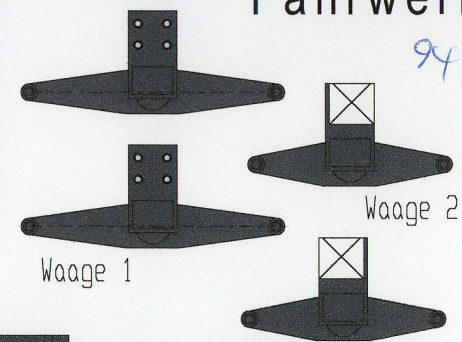


Außenrahmen



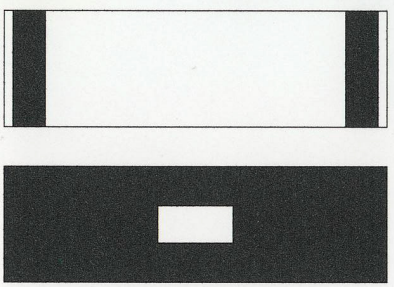
Auflager Waage

Fahrwerk

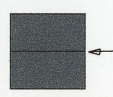


Waage 1

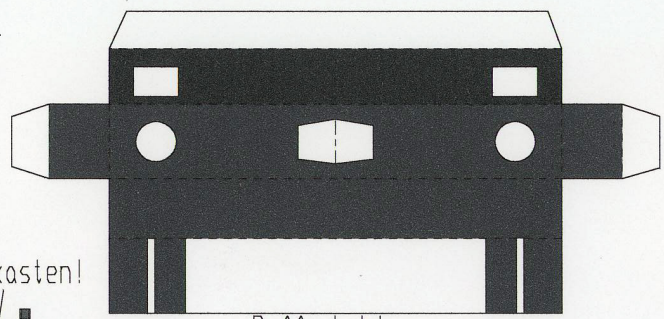
Waage 2



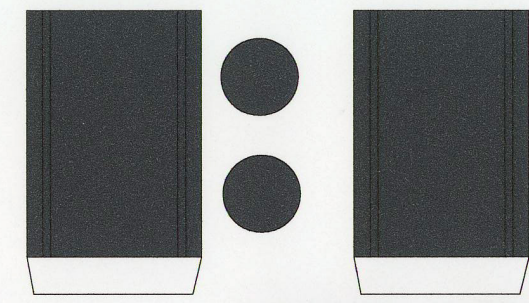
Ende Außenrahmen



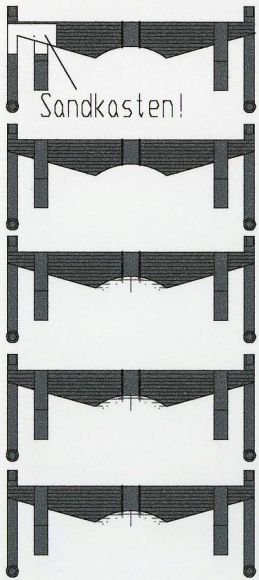
Sandkasten!



Pufferbohle



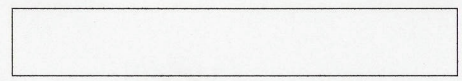
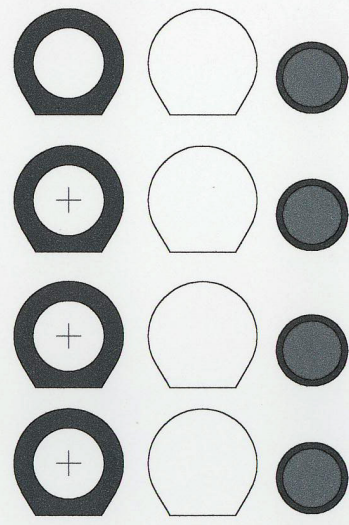
Luftbehälter



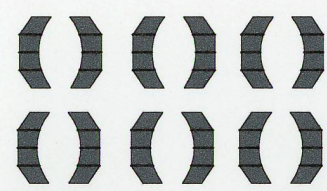
Sandkasten!



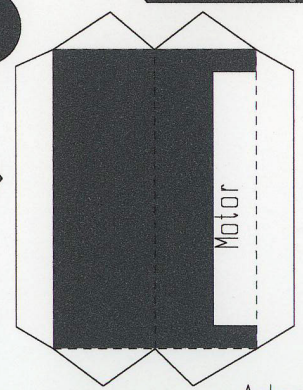
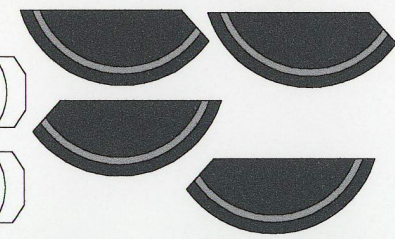
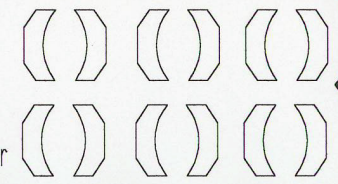
Federn



Verstärkung der Pufferbohle

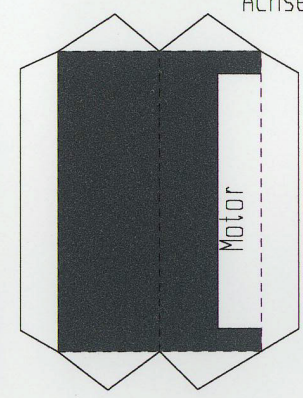
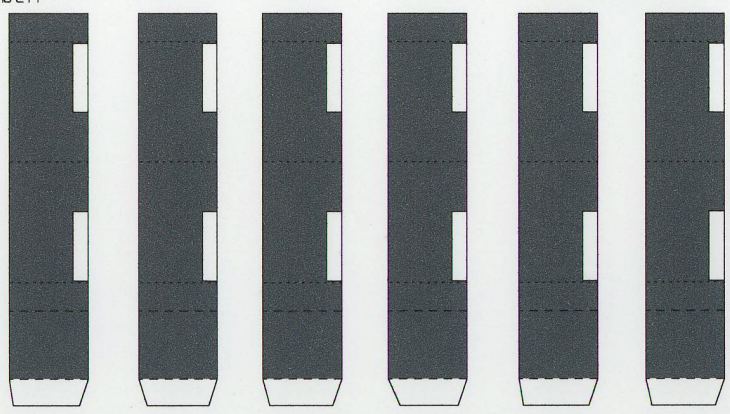


Radlager außen

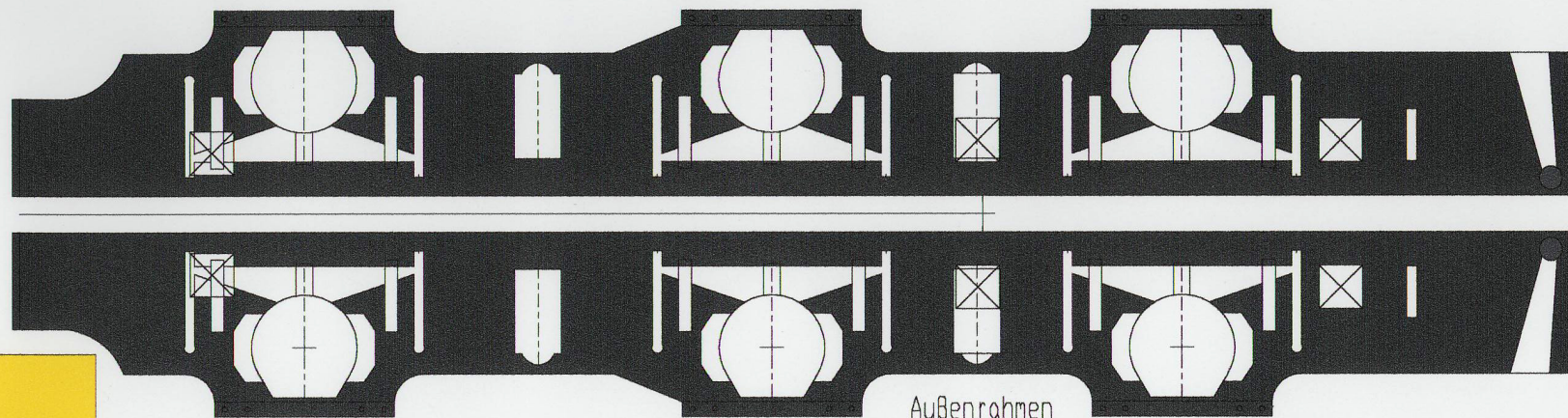


Motor

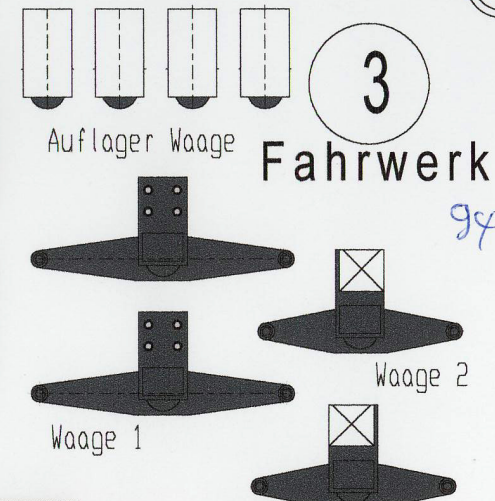
Achse



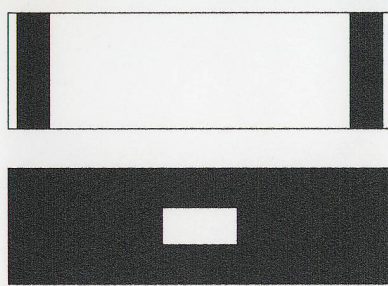
Motor



Außenrahmen



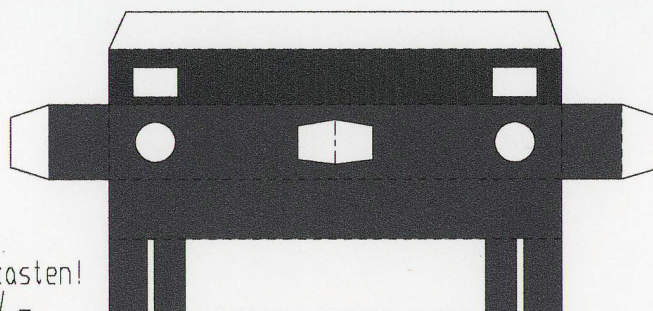
Fahrwerk



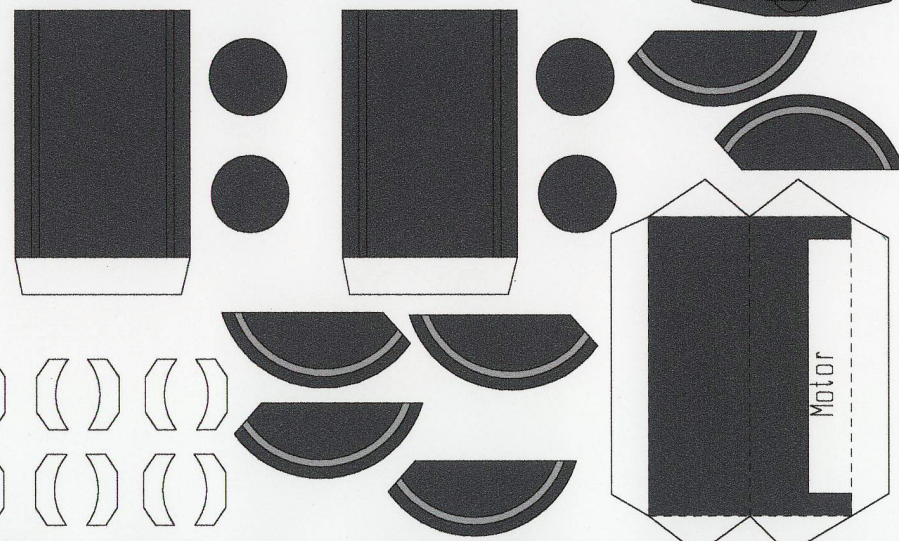
Ende Außenrahmen



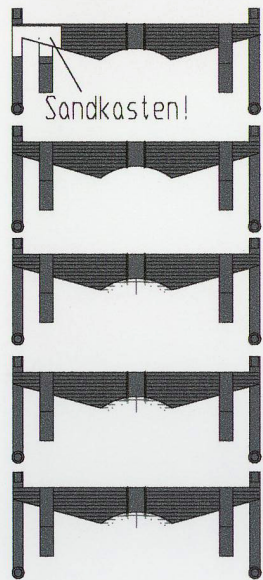
Sandkasten!



Pufferbohle



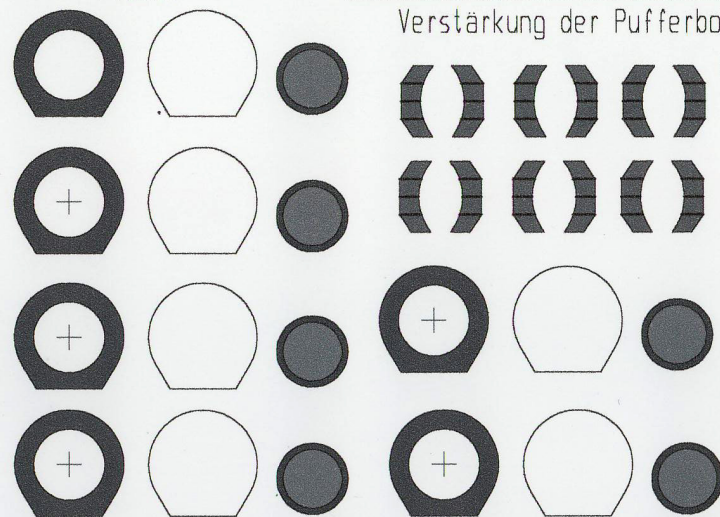
Luftbehälter



Sandkasten!

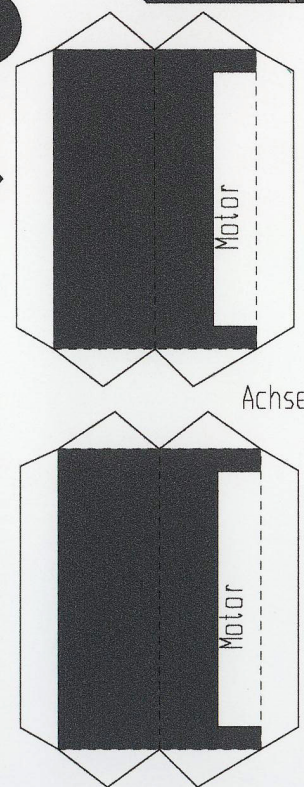
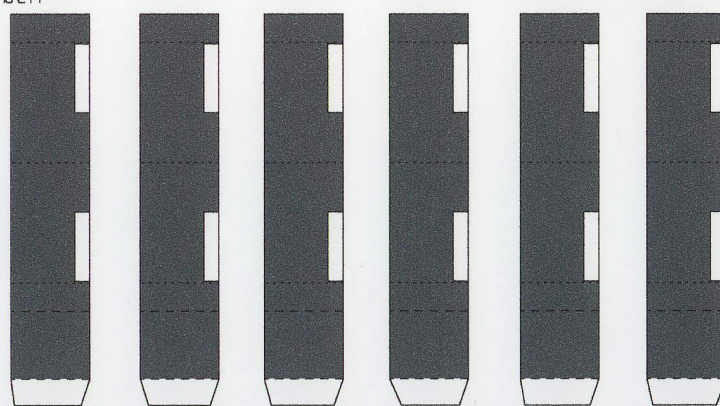


Federn



Verstärkung der Pufferbohle

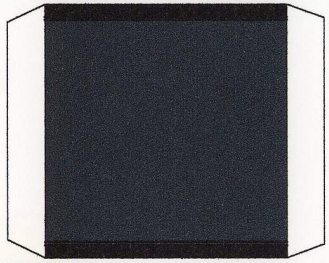
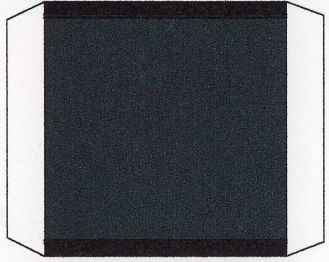
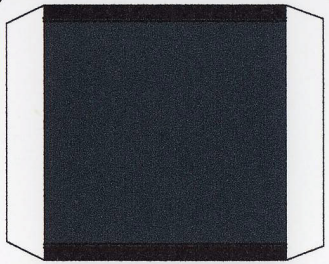
Radlager außen



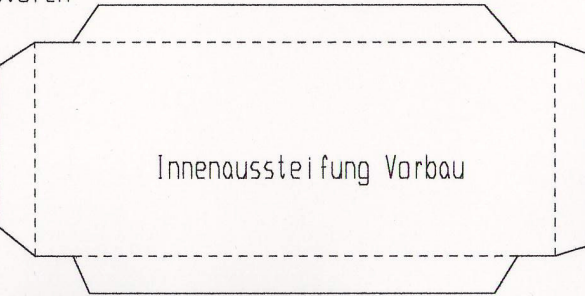
Motor

Motor

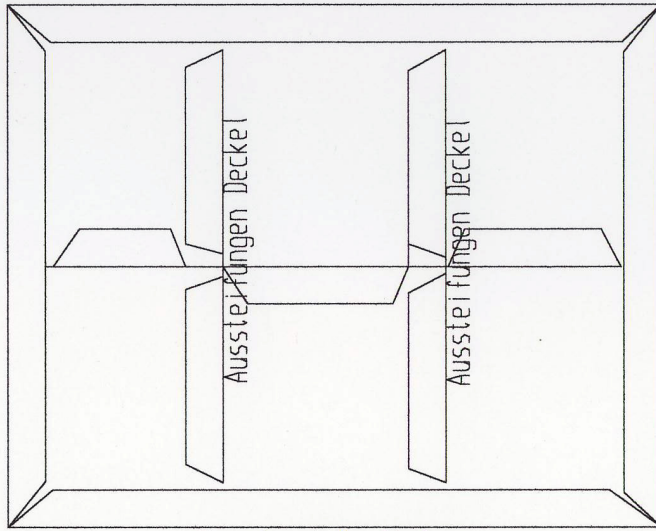
Achse



Motoren



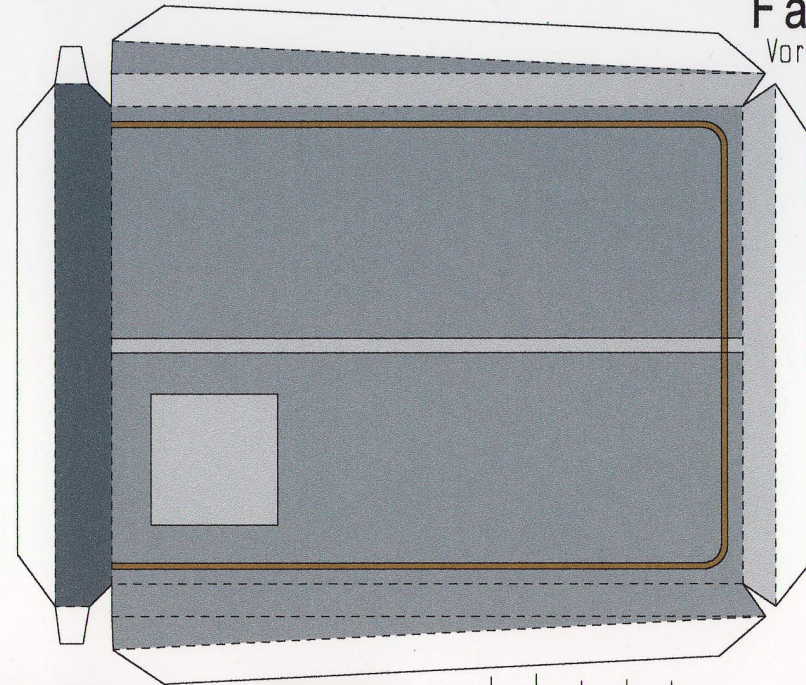
Innenaussteifung Vorbau



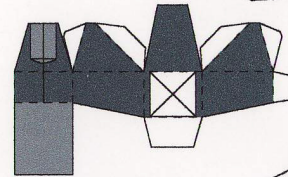
Zwischendecke Vorbau

Aussteifungen Deckel

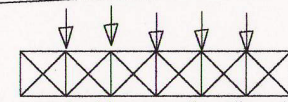
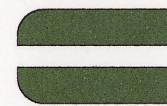
Aussteifungen Deckel



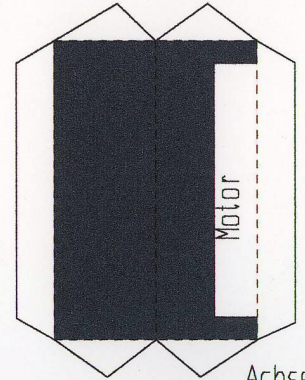
Verstärkung der Vorderseite Vorbau innen



Sandkasten 2



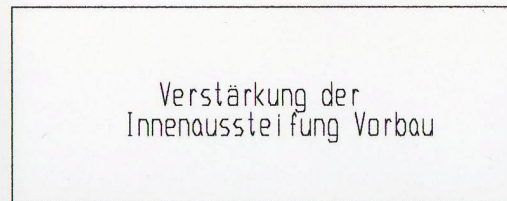
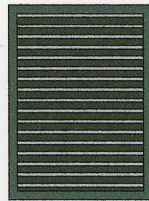
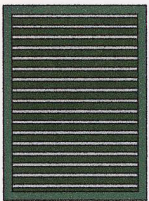
Auflager Sandkasten



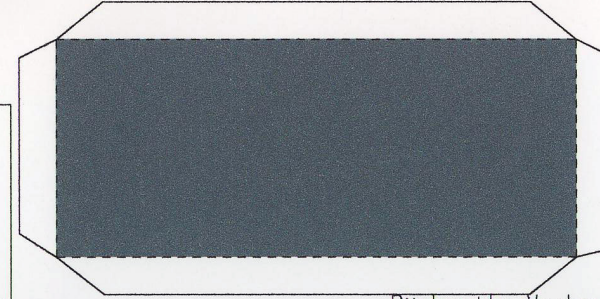
Motor

Achse

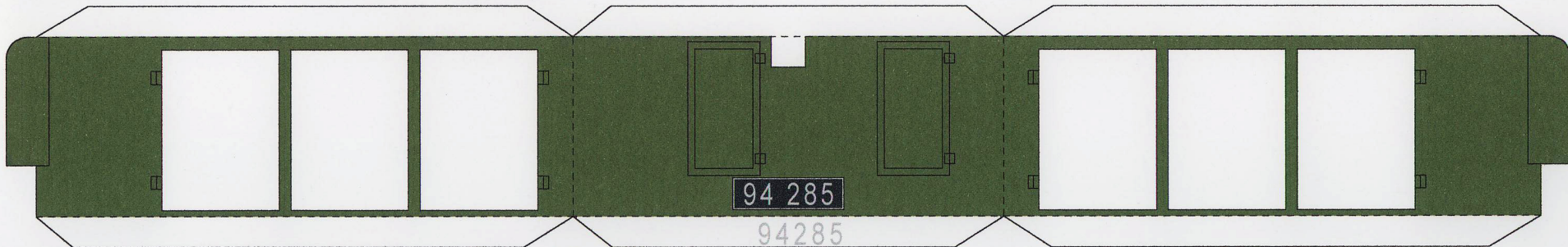
Lüftergitter



Verstärkung der Innenaussteifung Vorbau



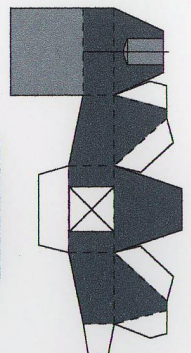
Rückseite Vorbau



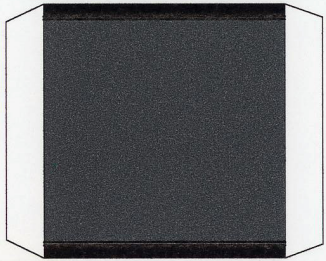
Vorbau Außenseiten

94 285

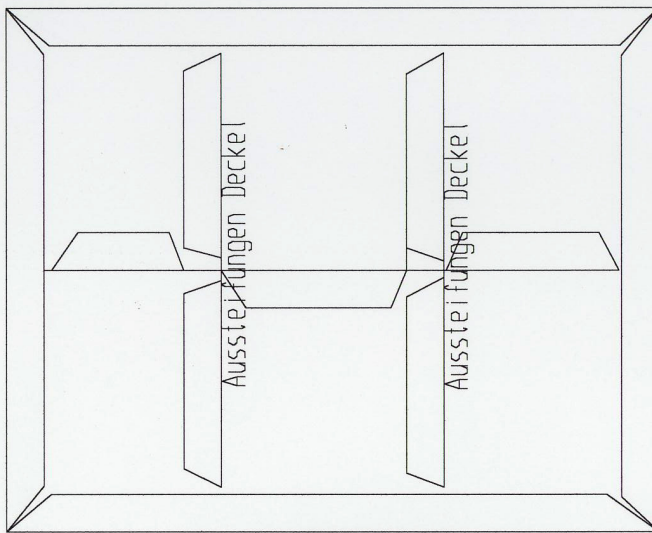
94285



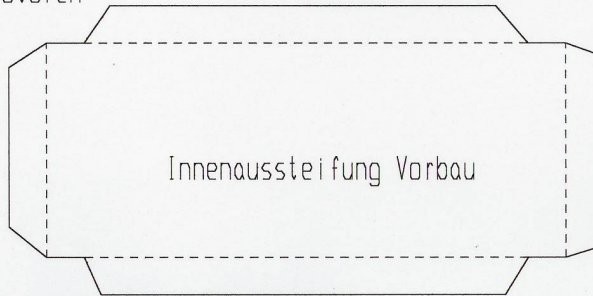
Sandkasten 1



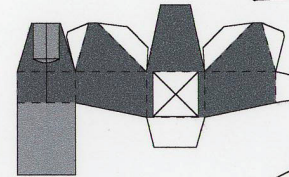
Motoren



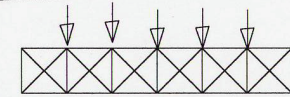
Zwischendecke Vorbau



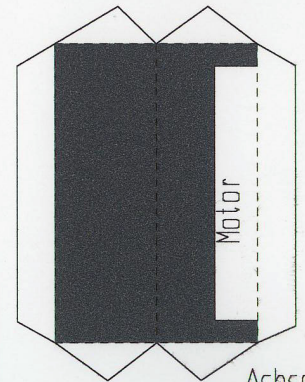
Innenaussteifung Vorbau



Sandkasten 2



Auflager Sandkasten

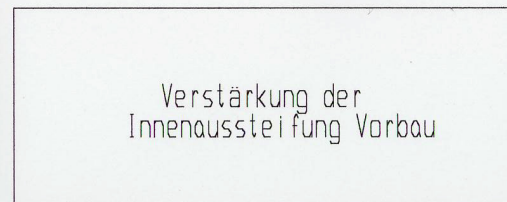


Motor

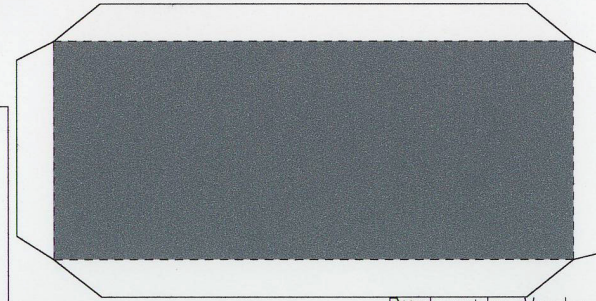
Achse



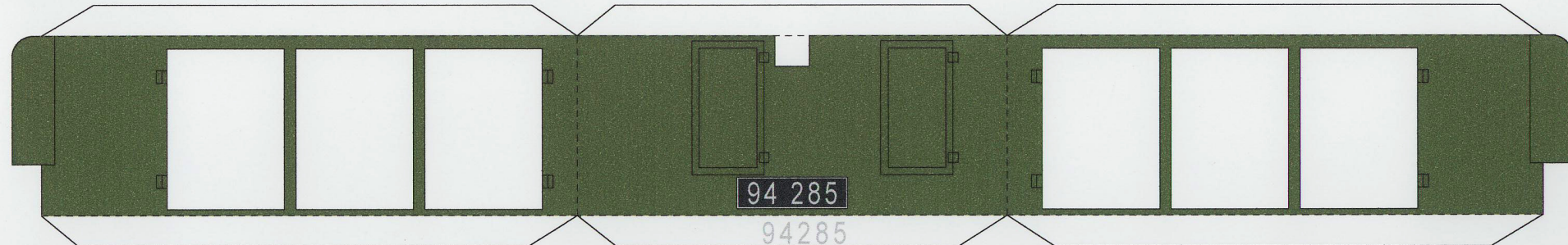
Lüftergitter



Verstärkung der Innenaussteifung Vorbau



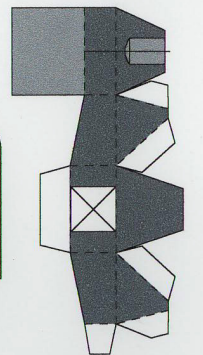
Rückseite Vorbau



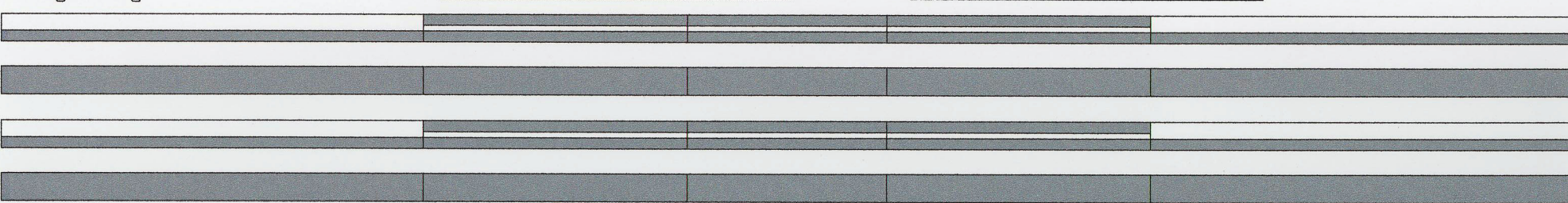
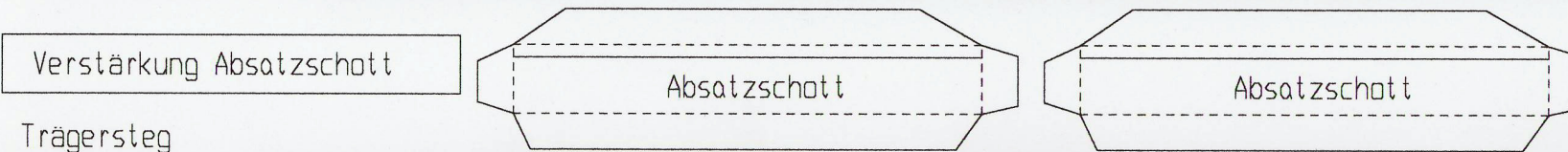
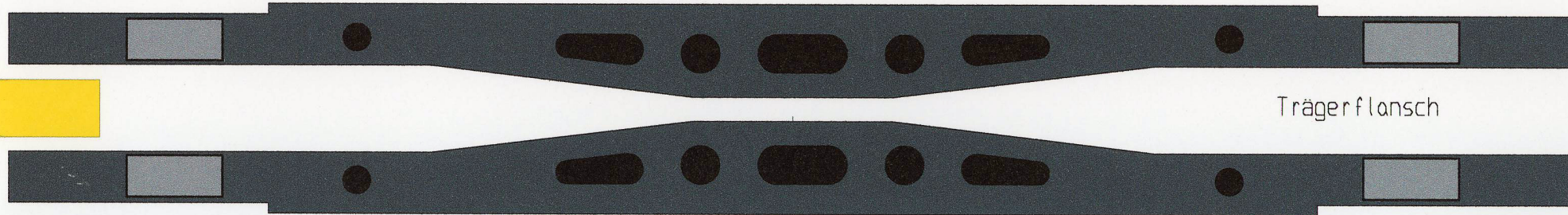
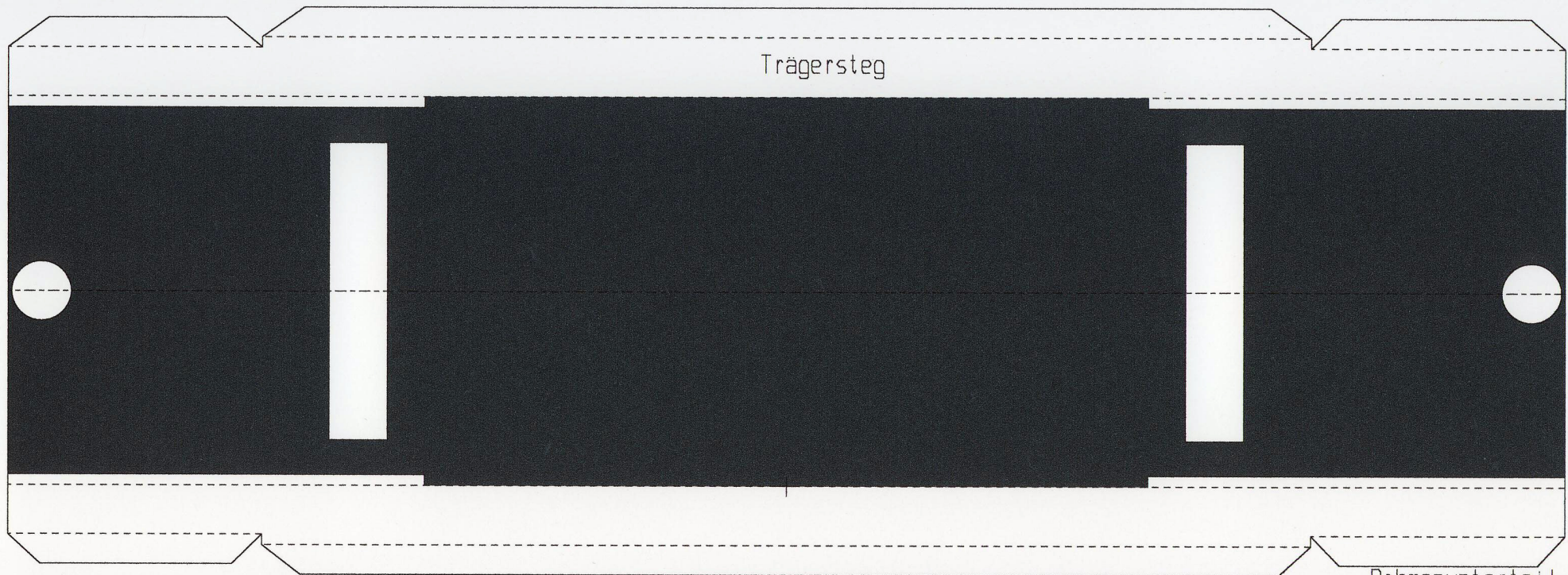
Vorbau Außenseiten

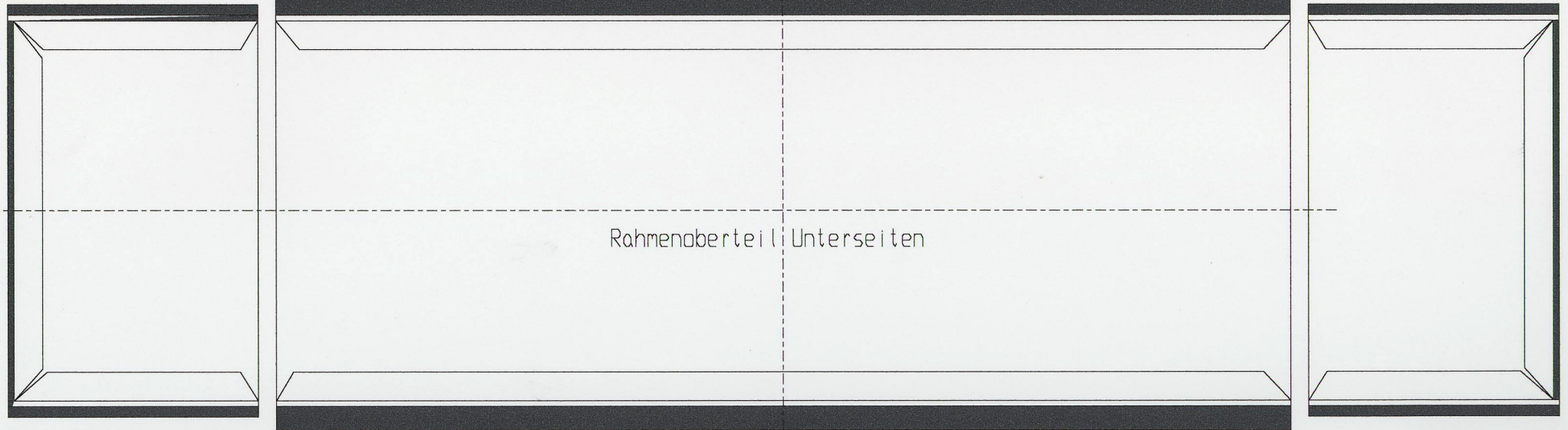
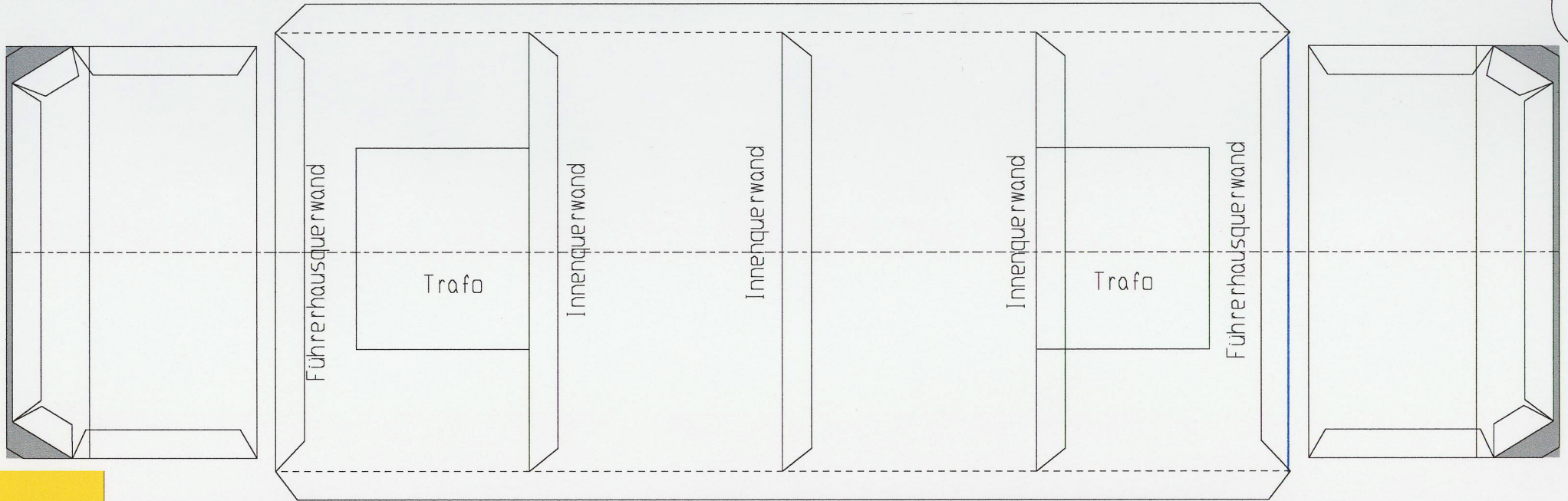
94 285

94285

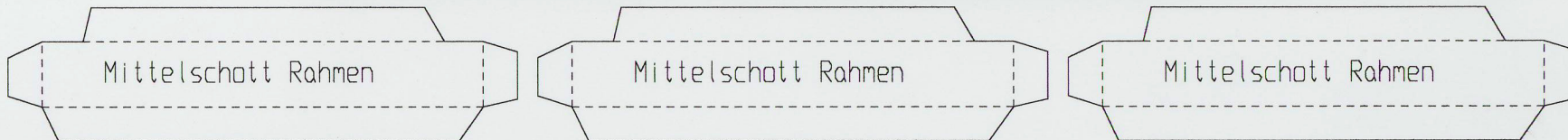


Sandkasten 1



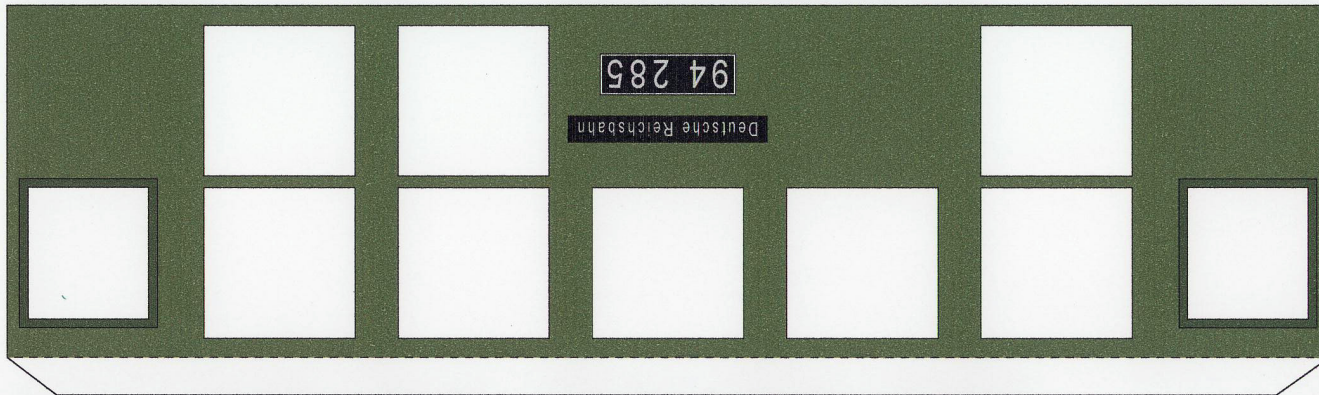


Rahmenaberteil Unterseiten



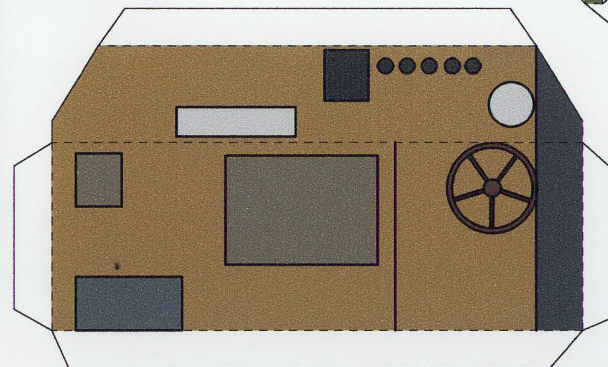
Verstärkung Mittelschott

Verstärkung Mittelschott



Außen Längswände

Lüftungsgitter



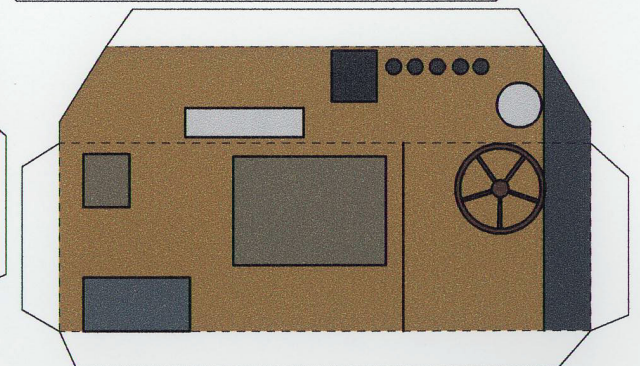
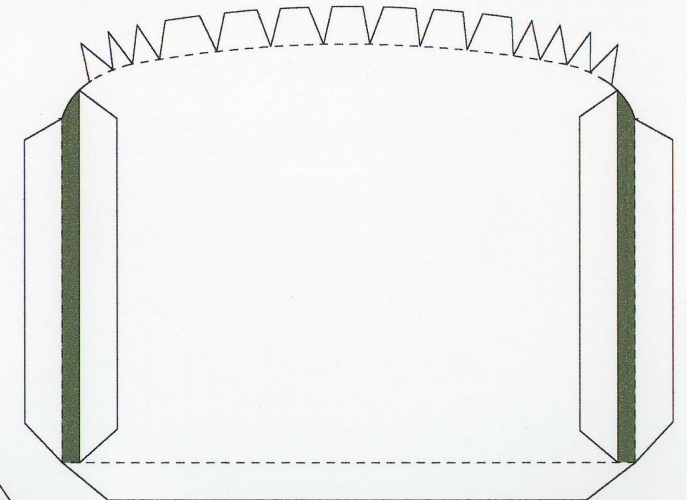
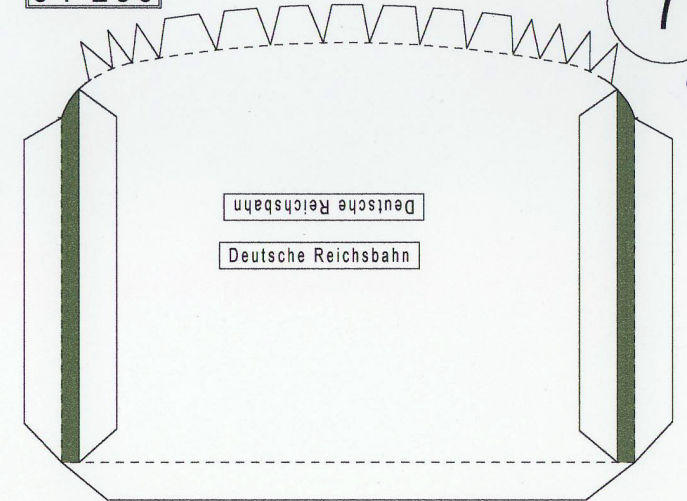
Fahrpult

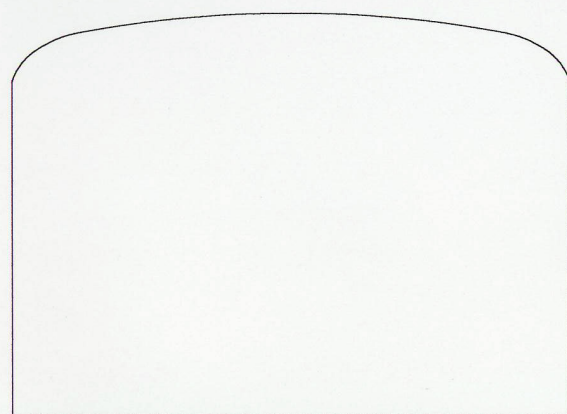
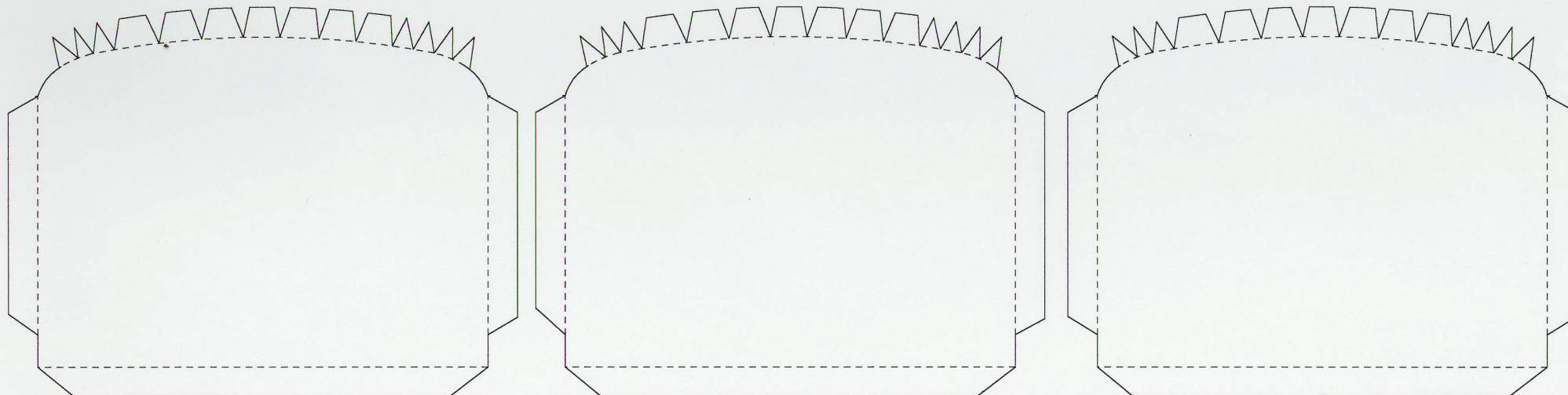
94 285
982 46

Führerhaus Querwand

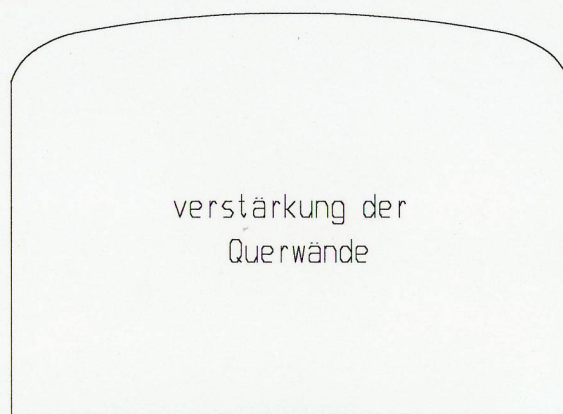
7

98

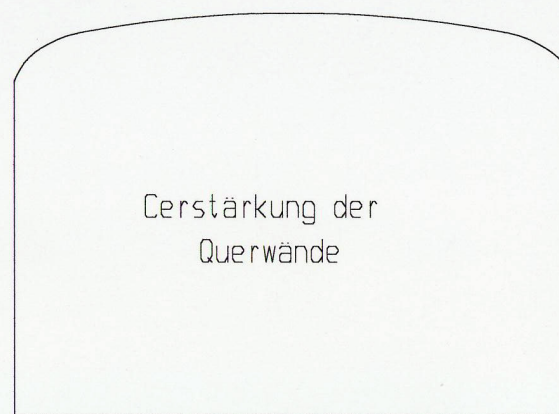




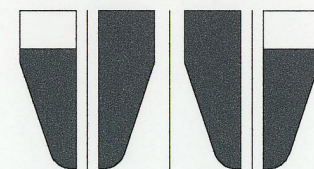
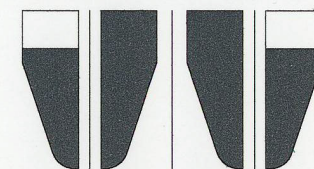
verstärkung der
Querwände



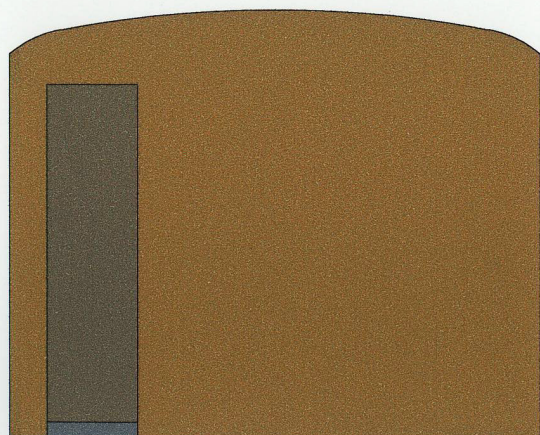
Verstärkung der
Querwände



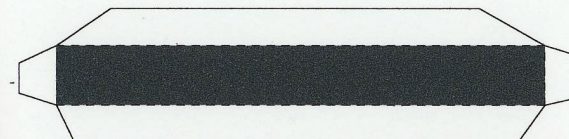
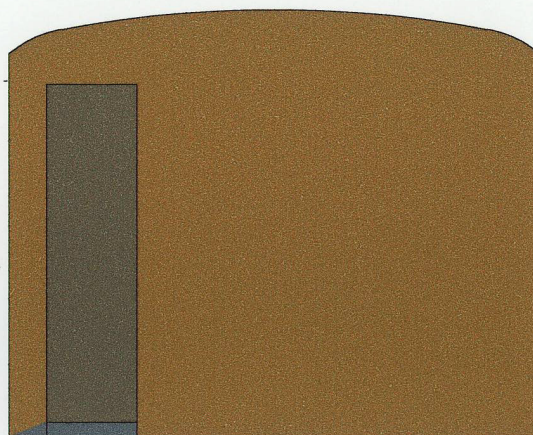
Querwände innen



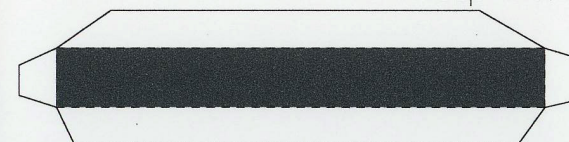
Schienenräume



Innenseite Führerhausrückwand

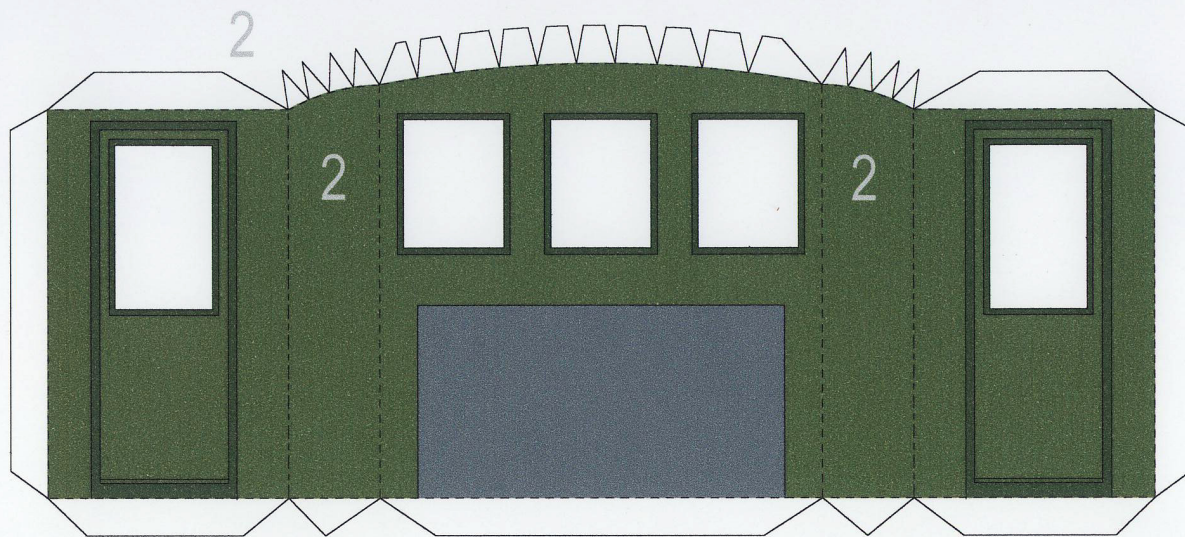


Haupt-Rahmen Endschild

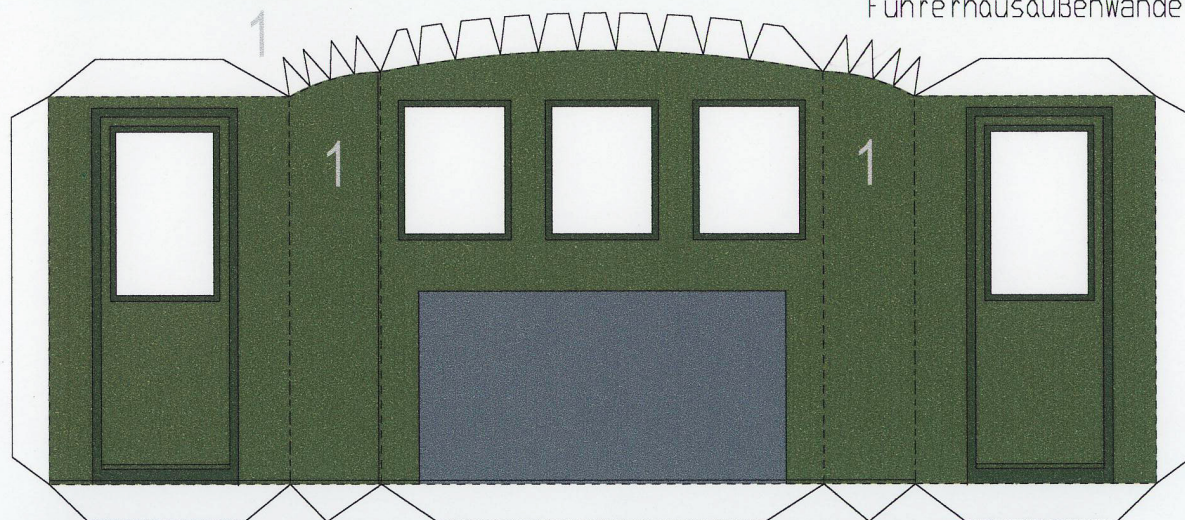


Verstärkung Rahmen Endschild

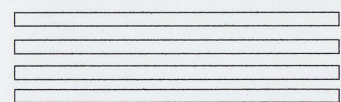
Verstärkung Rahmen Endschild



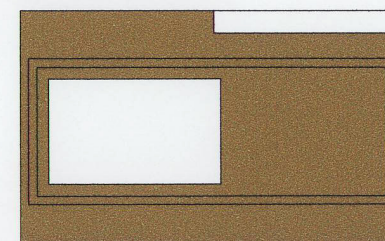
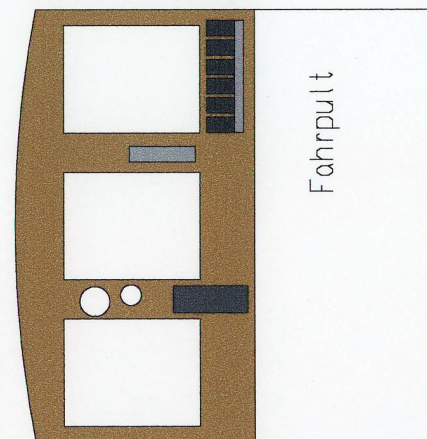
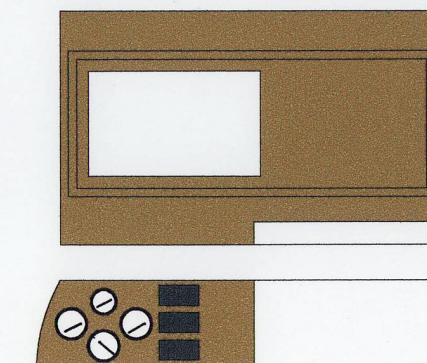
Führerhausaußenwände



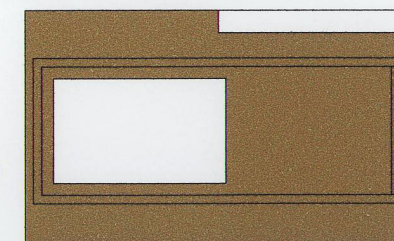
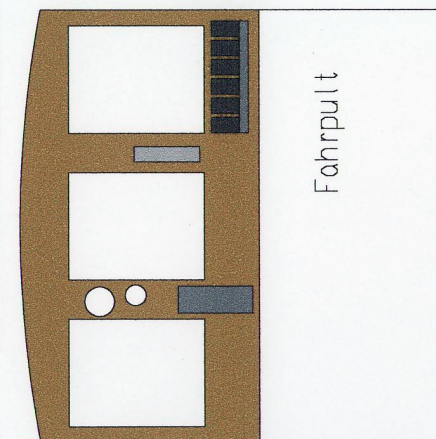
Führerhausfußboden



Abdeckkanten
unter den Türen



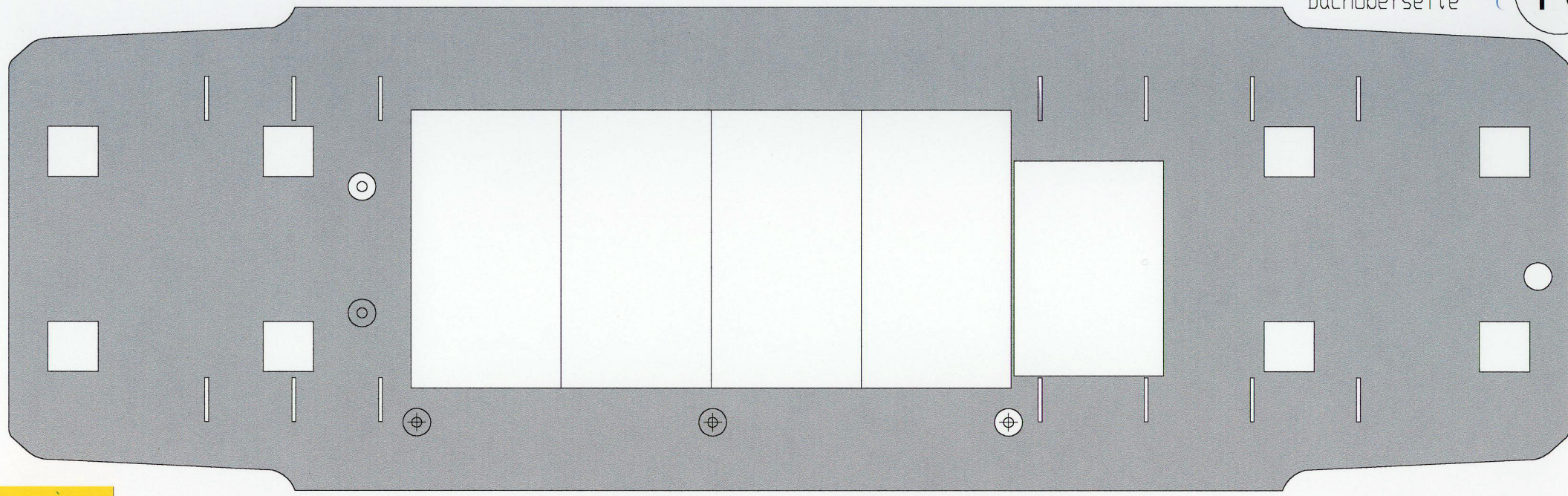
Führerhaus-Innenwände



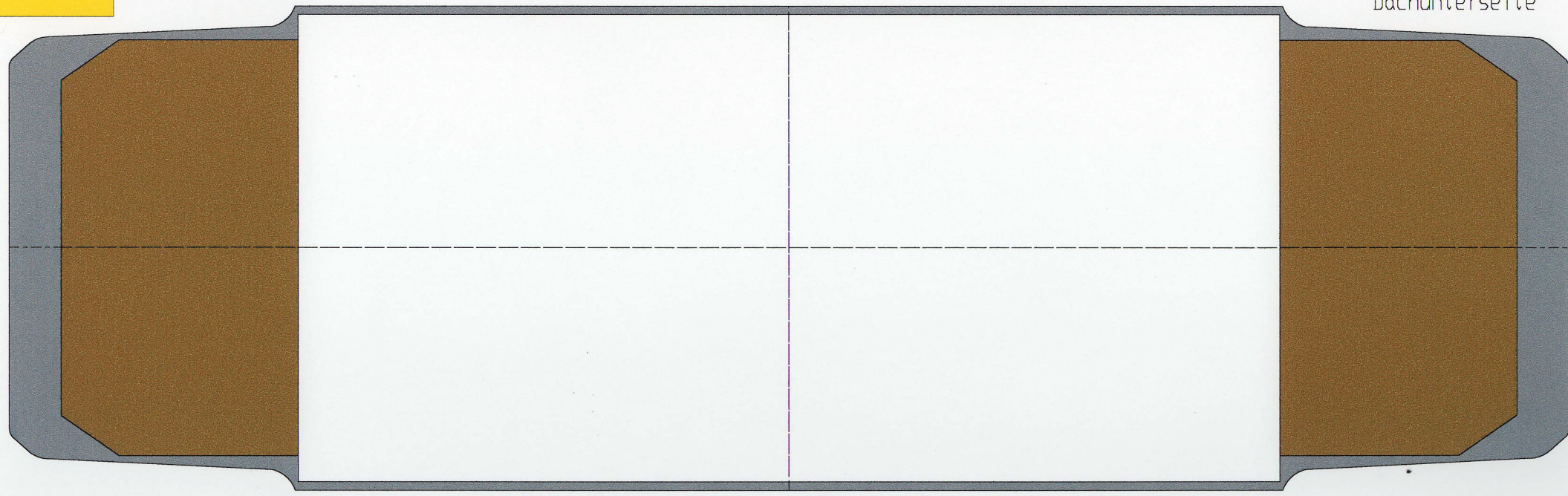
94

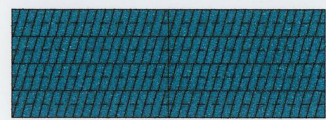
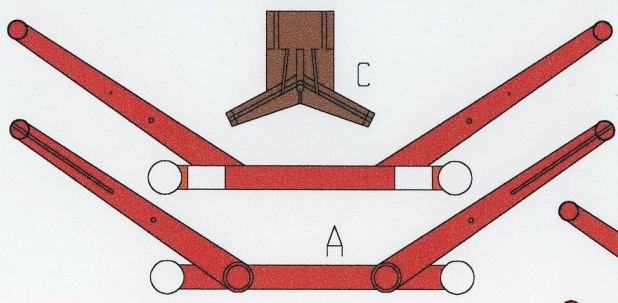
9

Dachoberseite



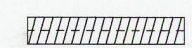
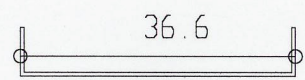
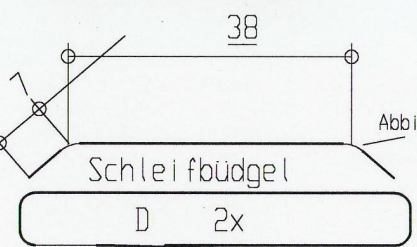
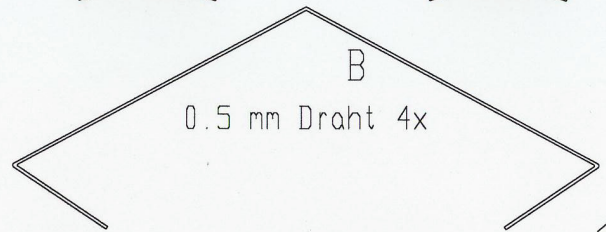
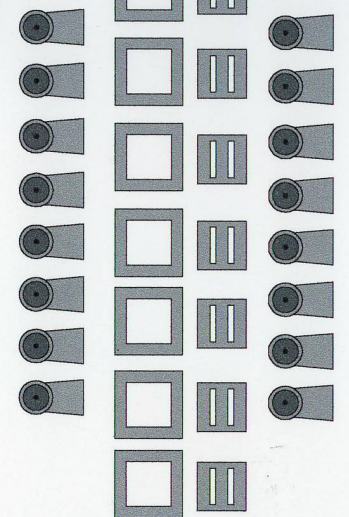
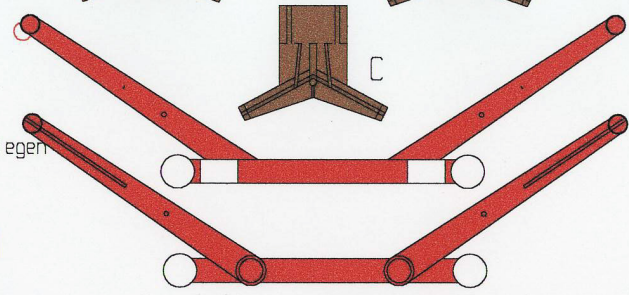
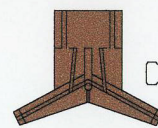
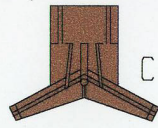
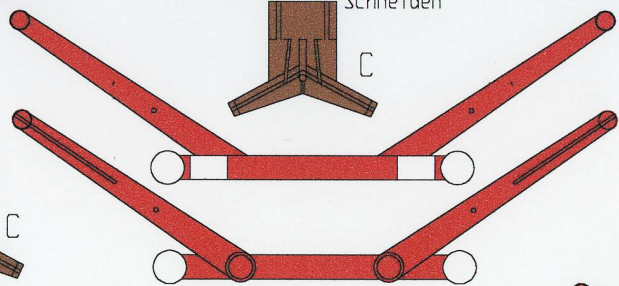
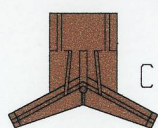
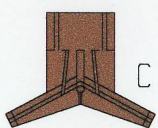
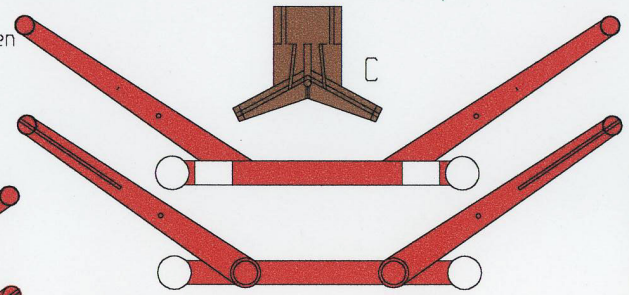
Dachunterseite



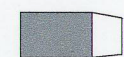
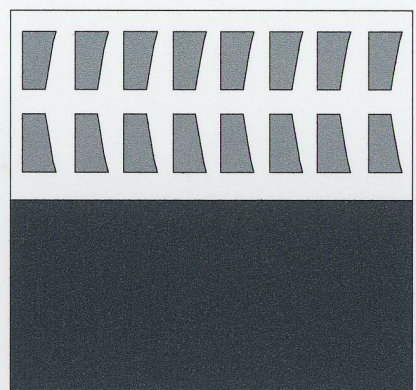
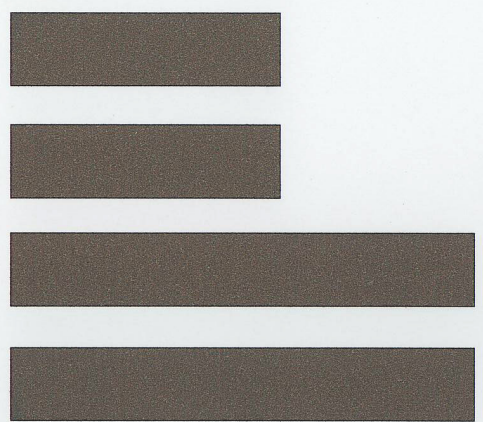
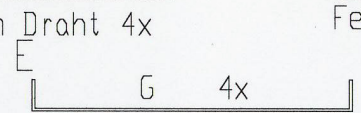


Schneiden

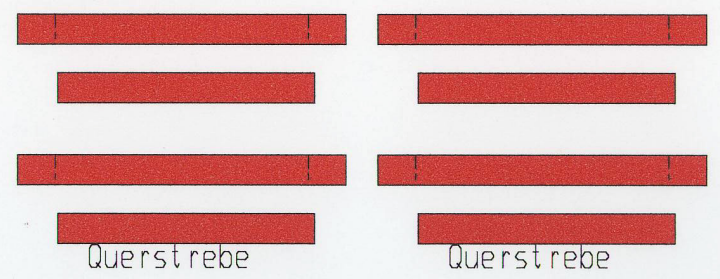
Schneiden



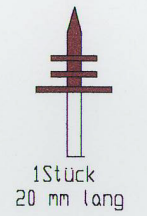
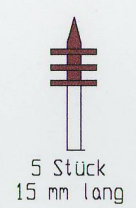
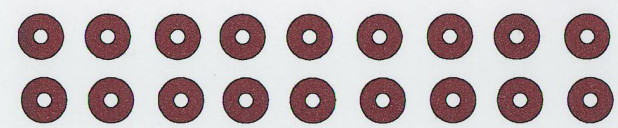
in dieser Form knicken und um den Draht kleben



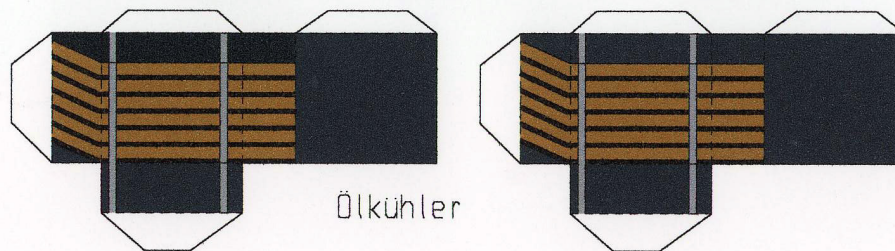
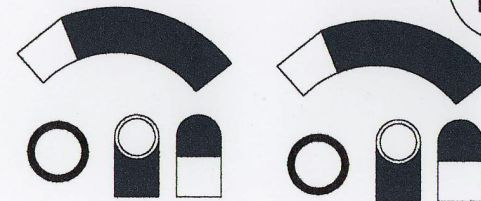
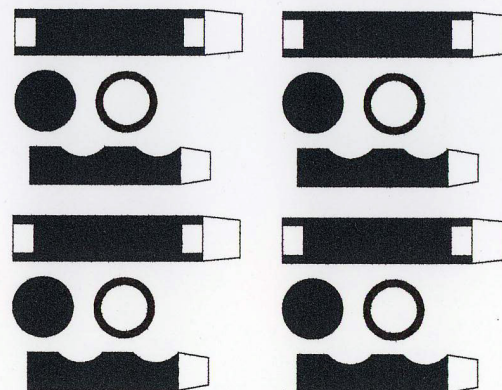
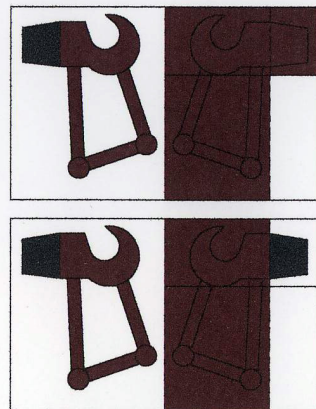
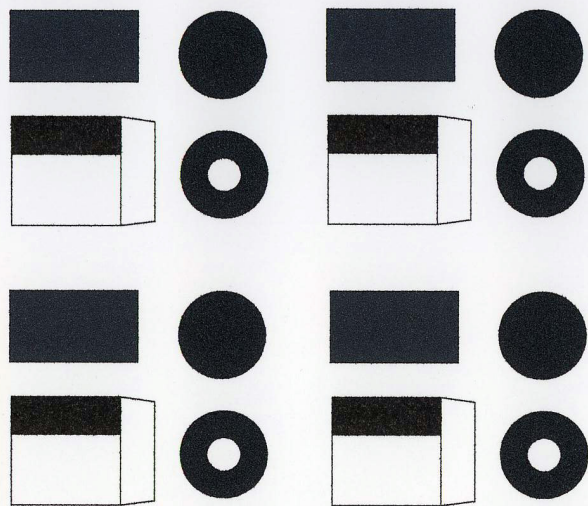
Pfeife



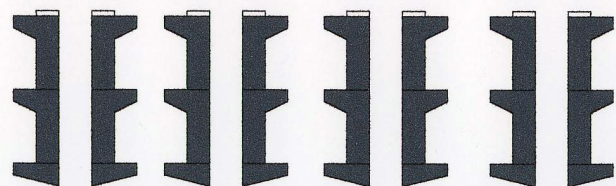
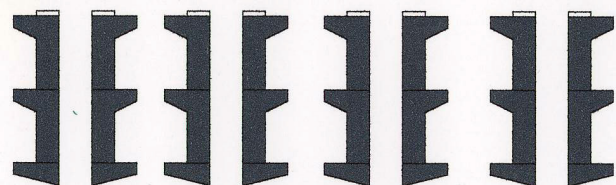
Isolatoren



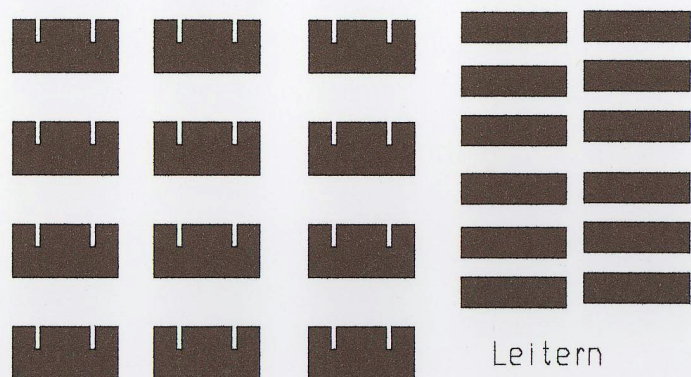
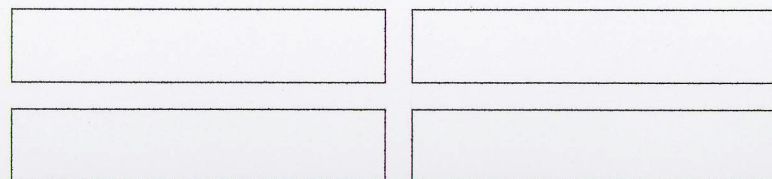
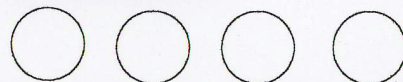
94



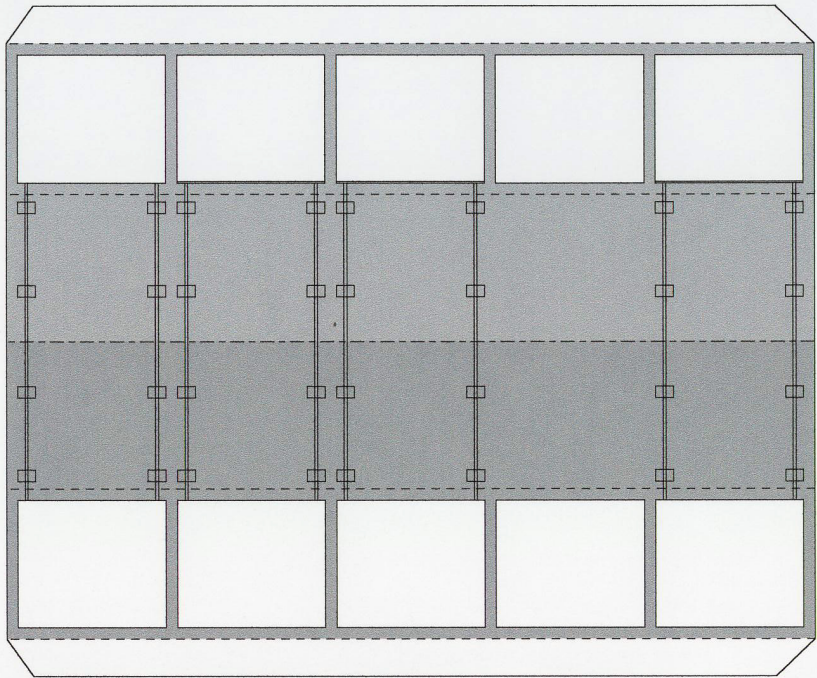
Ölkühler



Auflager Brückenkasten

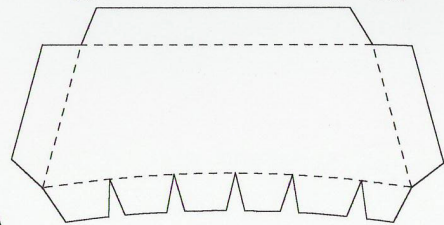
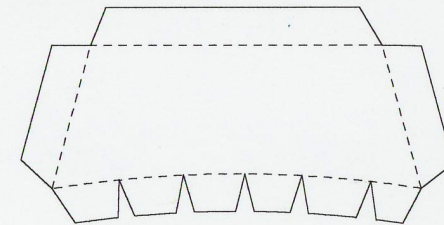


Leitern



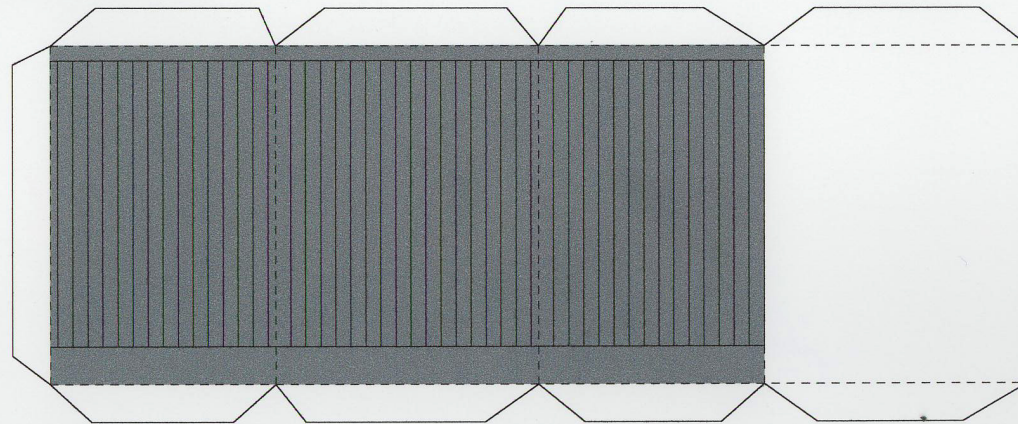
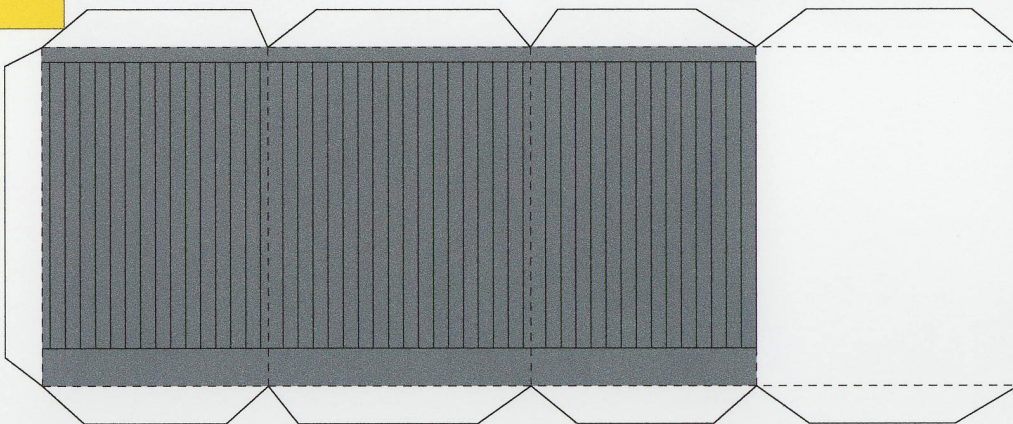
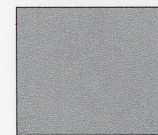
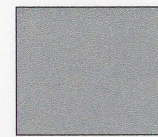
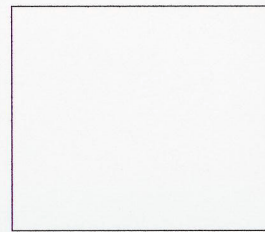
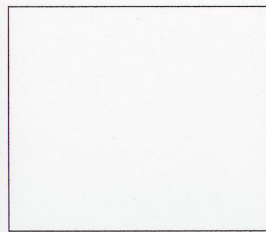
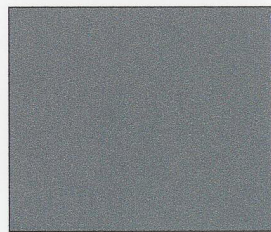
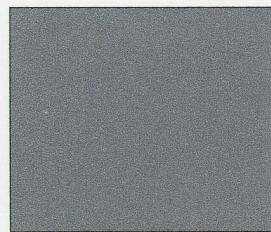
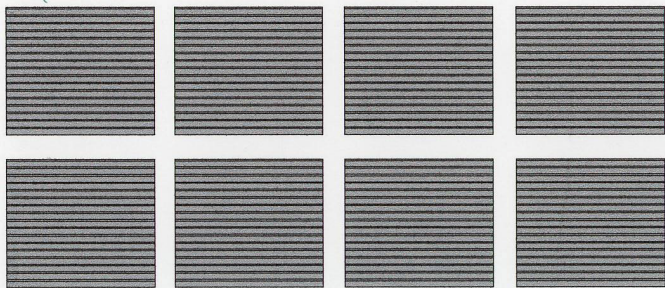
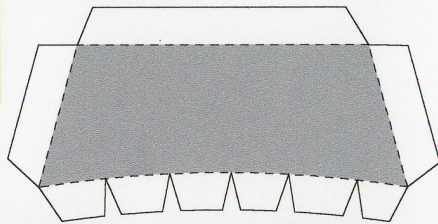
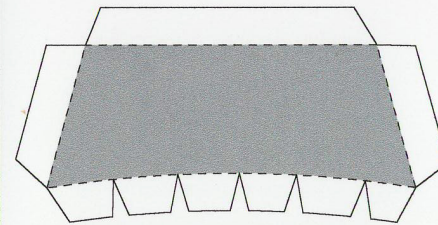
Verstärkungen

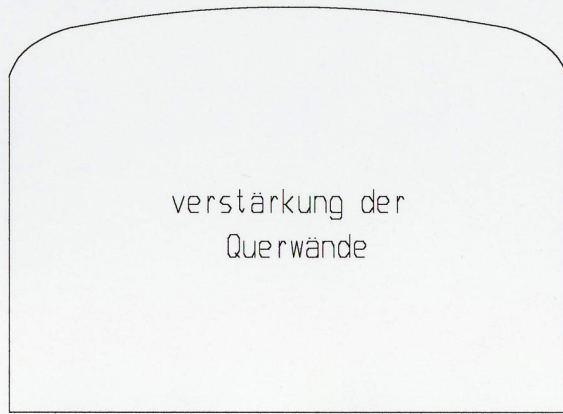
Verstärkungen



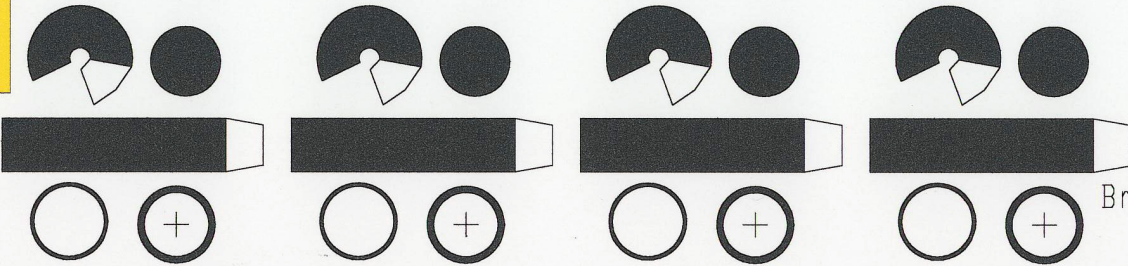
Verstärkungen

Verstärkungen

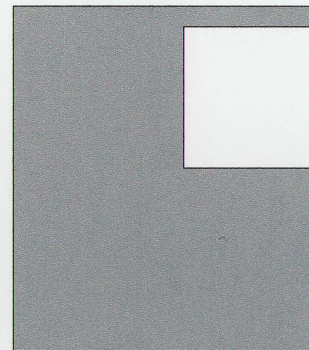
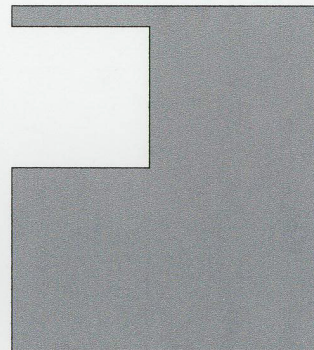
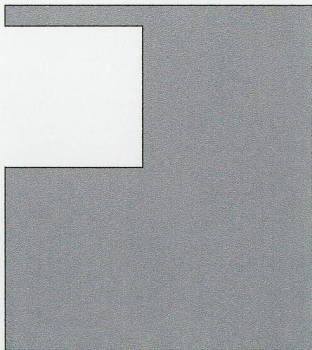
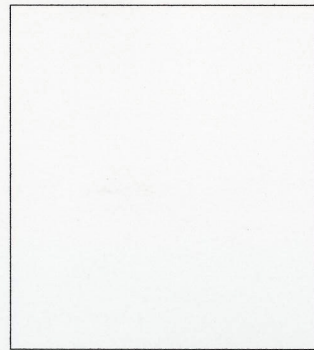
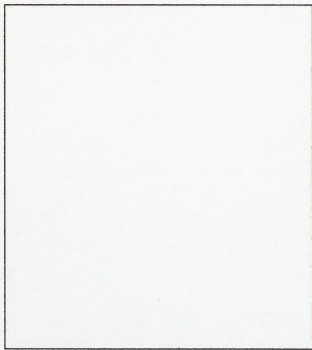
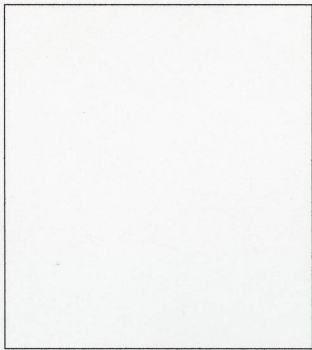




verstärkung der
Querwände

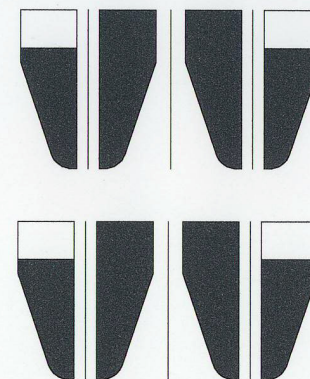
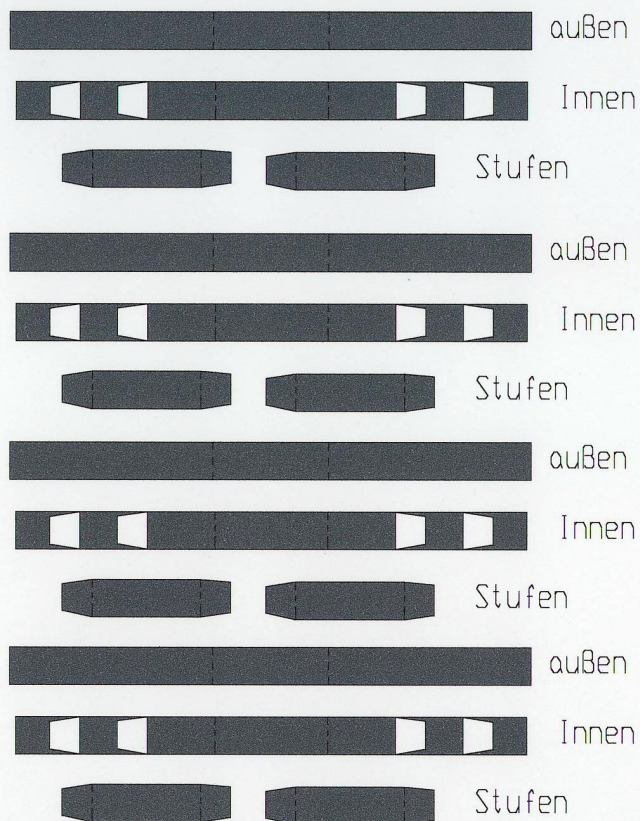
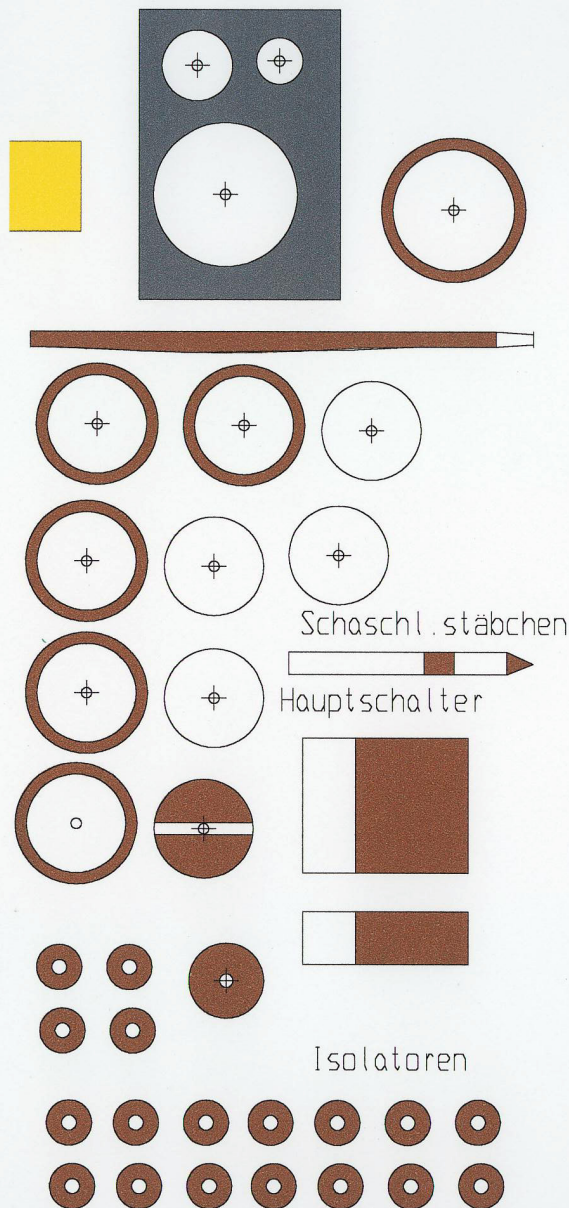


Bremszylinder



94

Alternativ andere Leitern



Schienenräumer

