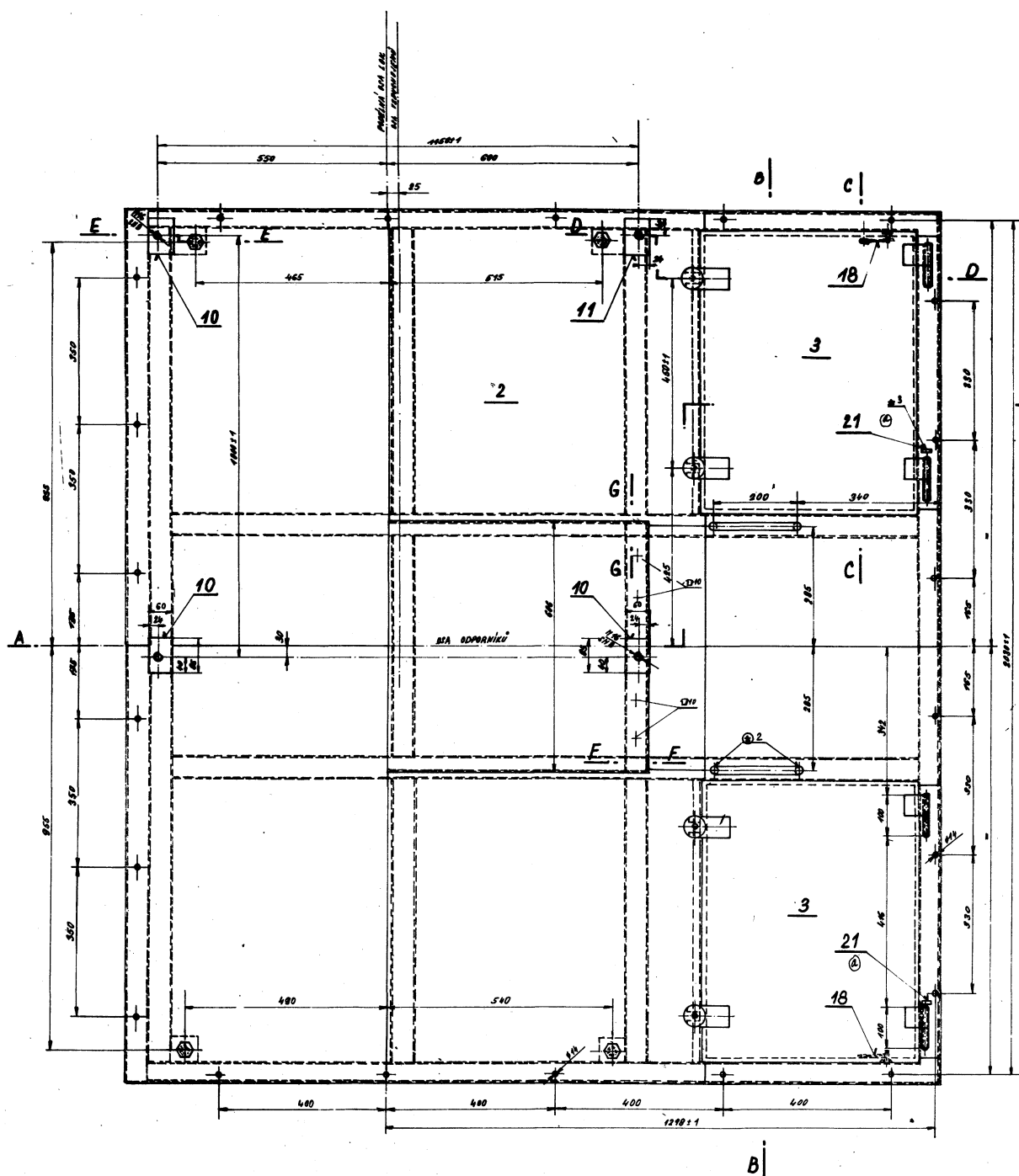
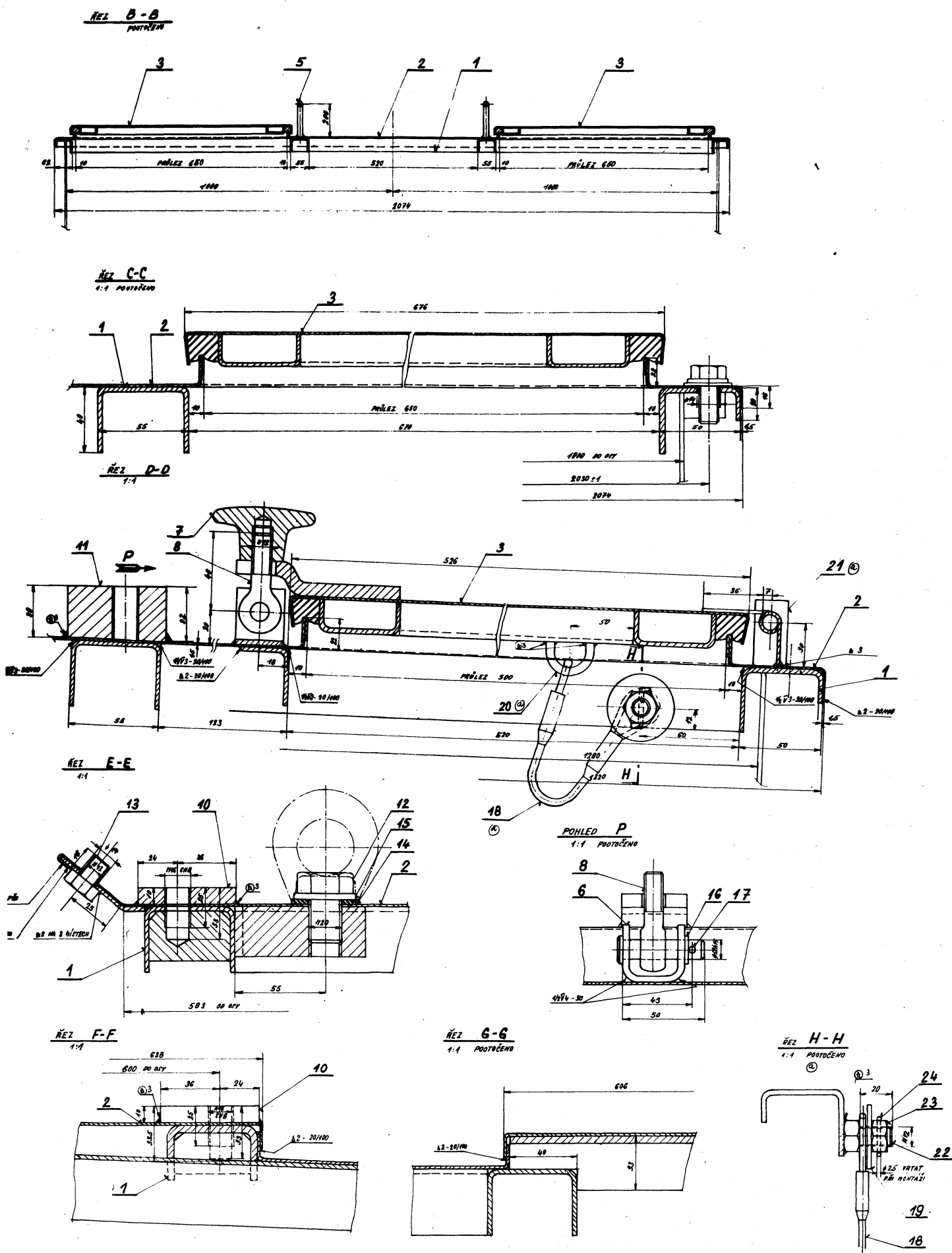


Technical drawing of a mechanical assembly with numbered components 1 through 10. The drawing shows a long horizontal shaft with various fittings, a U-bolt, and a nut. Dimensions include a 500 unit length for the first section, a 1200 unit total length, and a 1300 unit dimension for the U-bolt. An angle of $2^{\circ}40'$ is indicated at the left end.



КРЫША К

Lo 001471

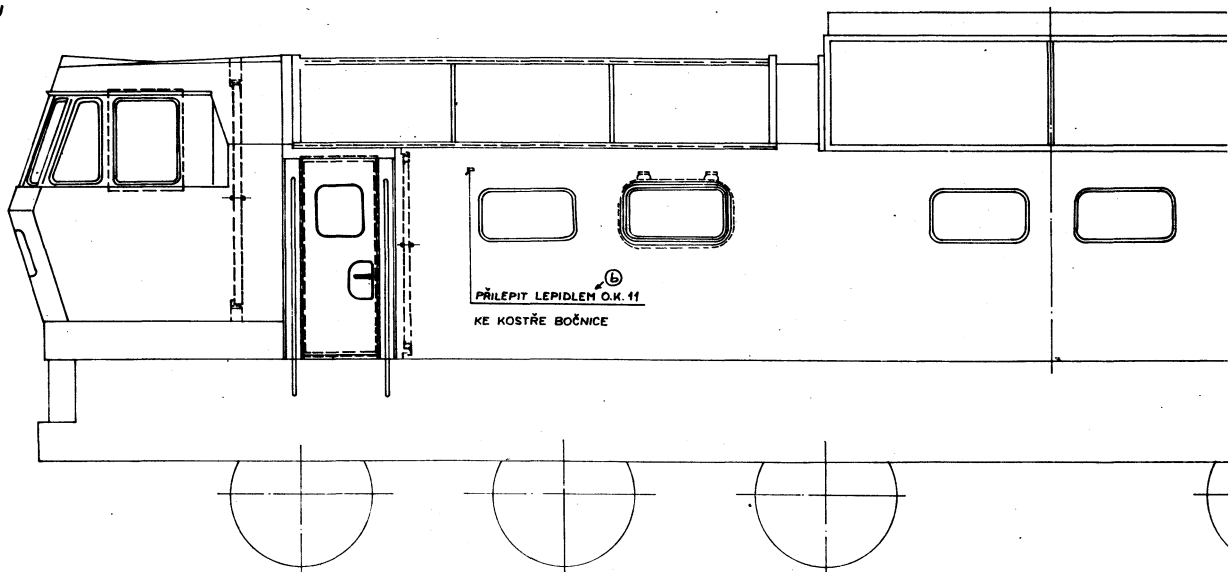


КАМЕРЫ СОПРОТИВЛЕНИЙ

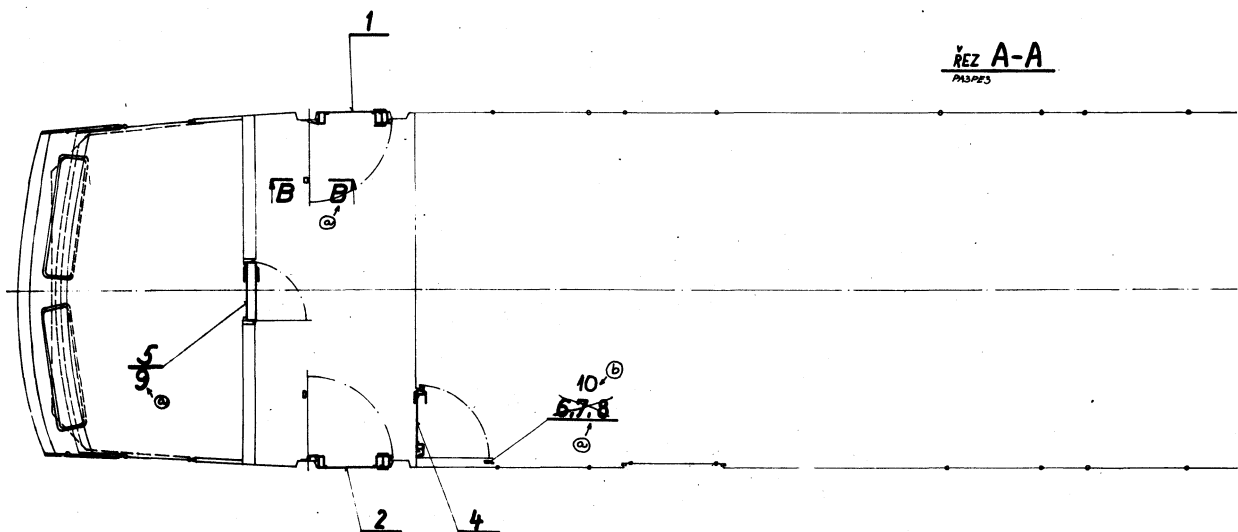
Ф И Г. 21

VZADU
СЗАДИ

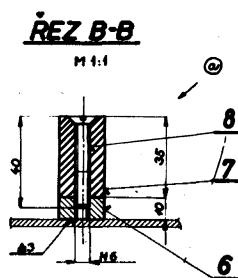
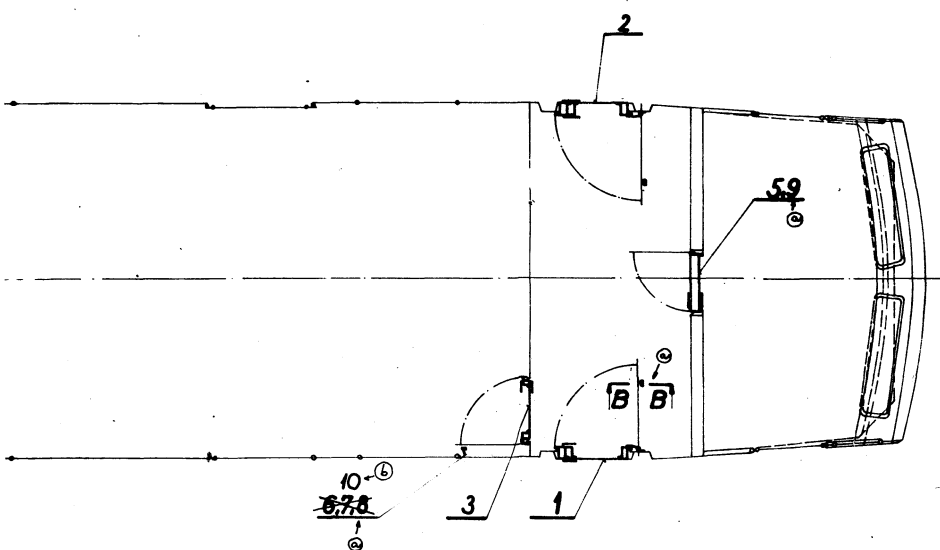
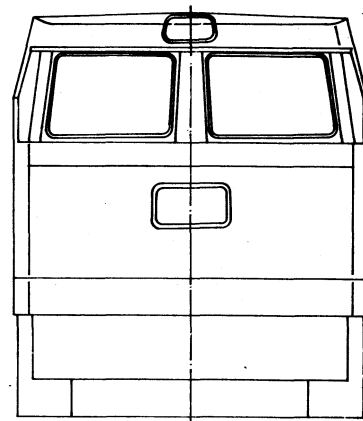
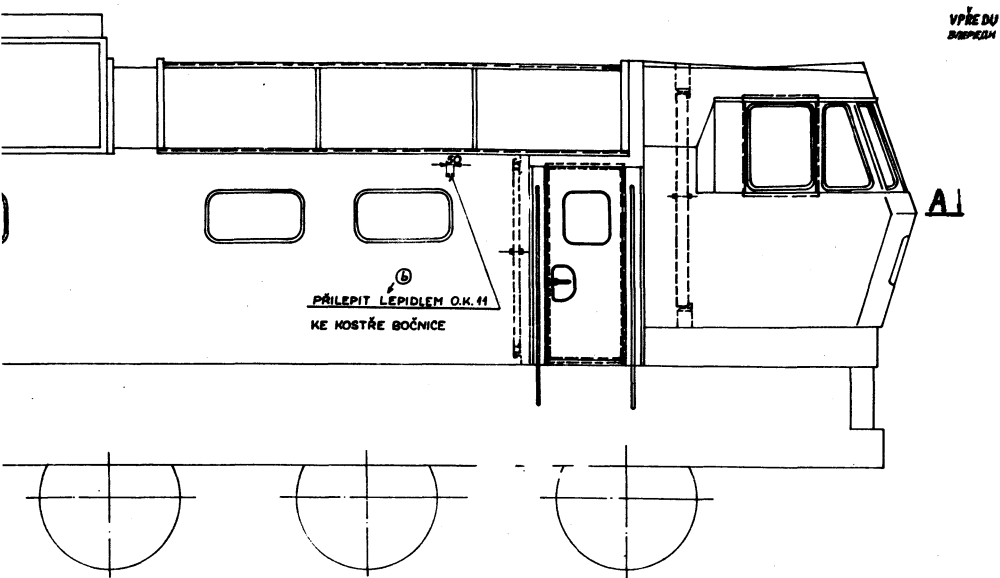
IA



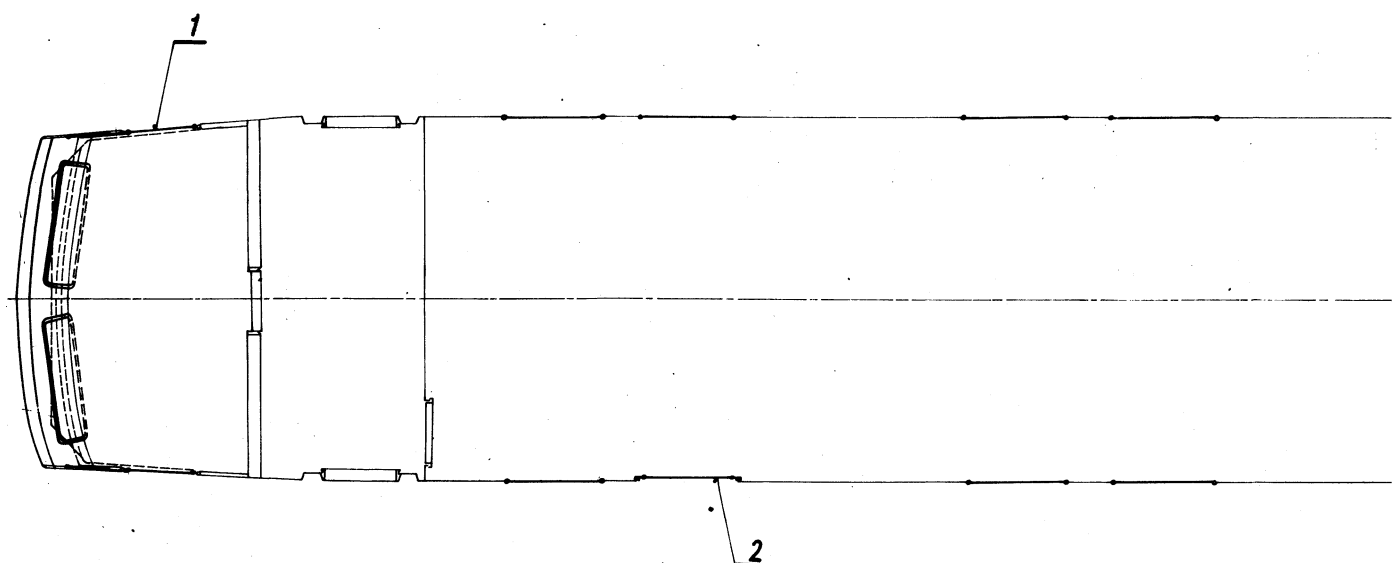
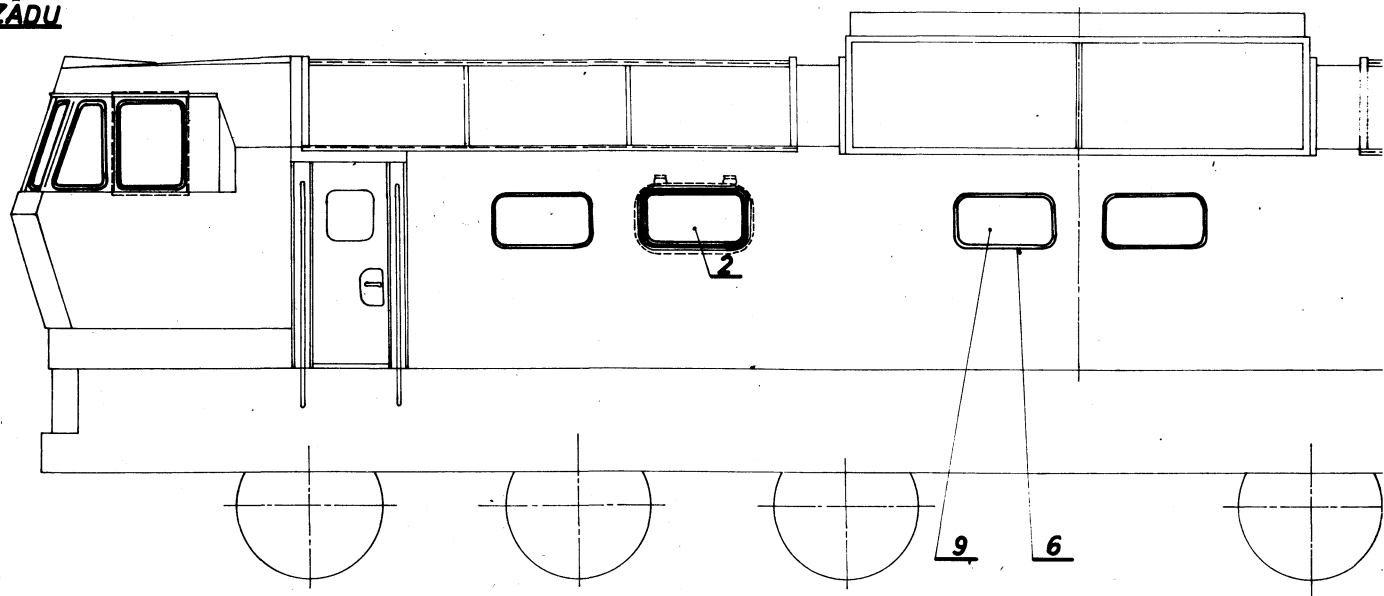
ŘEZ A-A
РАЗРЕЗ



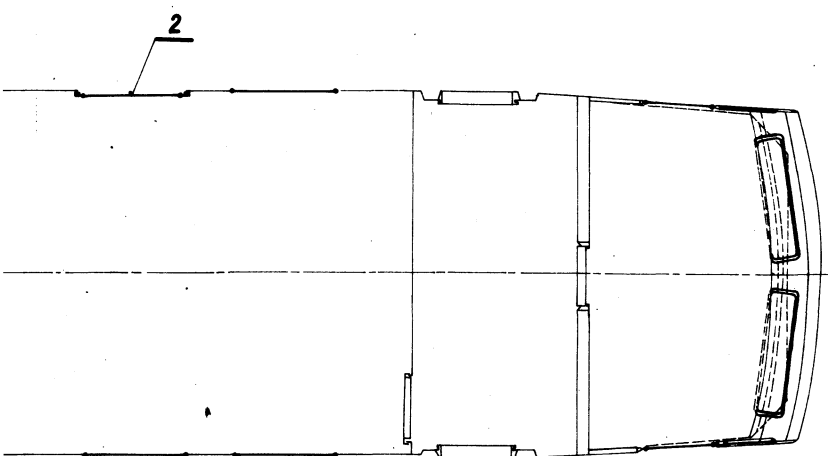
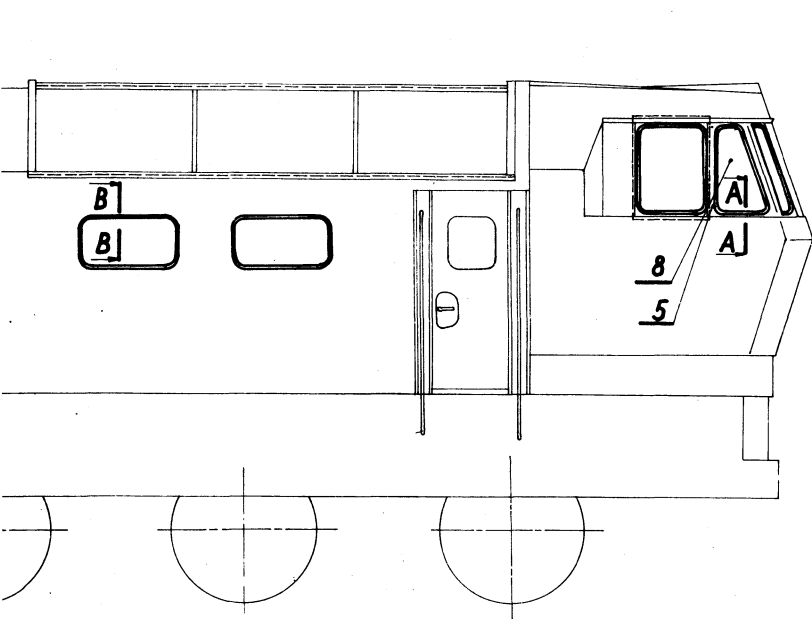
РАСПОЛОЖЕНИЕ



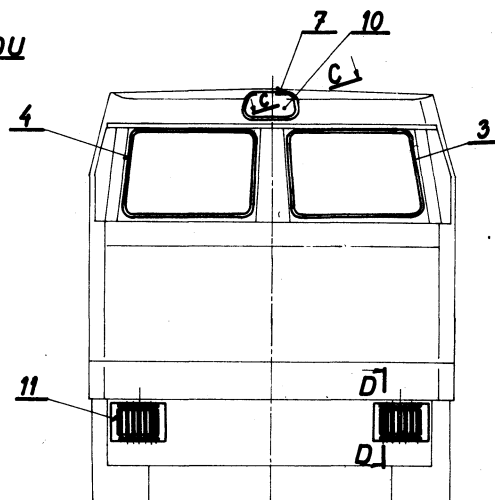
СЗАДН
VZADU



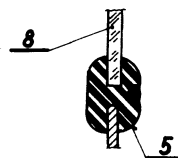
РАСПОЛОЖЕН



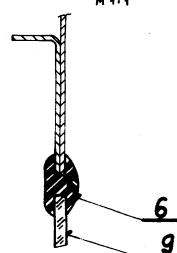
ВПЕРЕДИ
VPŘEDU



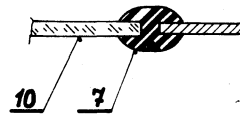
СЕЧЕНИЕ
PRŮŘEZ A-A
M 1:1



СЕЧЕНИЕ
PRŮŘEZ B-B
M 1:1



СЕЧЕНИЕ
PRŮŘEZ C-C
M 1:1



СЕЧЕНИЕ
PRŮŘEZ D-D
M 1:1
MŮŽE PŘÍHNOUT PODLE
TVARU RÁMEČKU

