

2 CLUB
NEWS
2012

märklin INSIDER

Large service section

Your benefits from our Club partners

Many super prizes to be won



Exclusive models for Insiders

Fire department classic in metal

Brilliant: color design, class 403



Characterful eye-catcher in H0: Märklin gives the Insider model 2012 a paint scheme precisely in line with the prototype: the exact blend of colors of the electric class 403 rail car train is recorded in demanding tests.

Contents Issue 02/2012

märklin INSIDER



Detail

- News: Märklin extends warranty for MHI and Club items/super competition prizes/trends at the Intermodellbau 4
- Club models 2012: authentic coloring – complexity of the paint scheme .. 6
- Latest update: Digital info-days this spring 9
- Unique: Magirus-Deutz fire service equipment truck for Insiders only 10 ►



Scene

- Insights: solid coloring and correct lettering – the paintwork on Märklin models sets quality standards 12 ►
- Portrait: home of the multi-round tablers – they find their way to the sociable Insider Round Table Rhineland from all over the place ... 14
- Overview: all current Insider round tables 17



Service

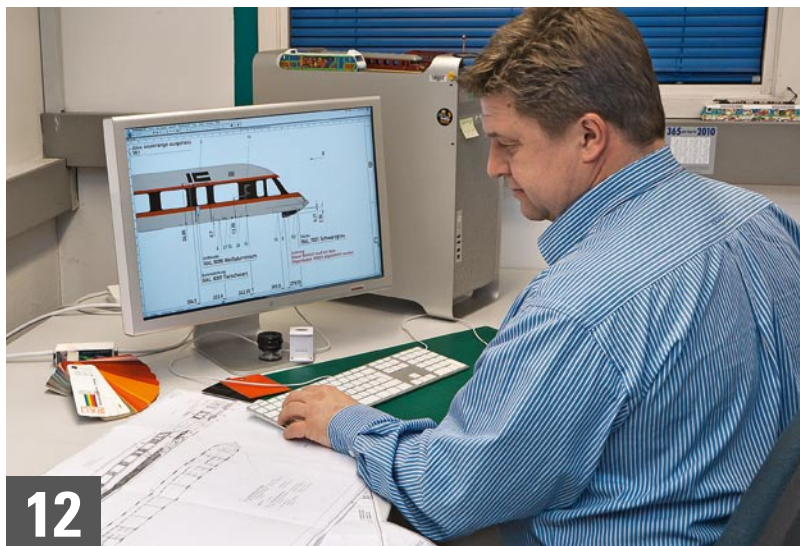
- Summary: Club members benefit from reduced prices and special discounts offered by many cooperation partners 18 ►
- Prize award: Märklin receives an award from Initiative Zink 24
- Editorial/masthead 3



In the Club mailing 02/2012 you will find the following enclosures: Märklin Insider News 02/2012, Märklin Magazin 02/2012.



Mad about modules: H0 scenery connects MIST5 Rhineland with associated round tables.



Brilliant: with correct colors and lettering faithful to the original, the finishers at Märklin add the finishing touches to the work of the designers – the result is top class and clean as a whistle.

Your service numbers

Customer Service

Club hotline:

Telephone Monday–Friday
from 10 a.m. – 6.30 p.m.

Telephone: +49 (0) 71 61/6 08-2 13 • Fax: -3 08

E-mail: insider-club@maerklin.com

Queries about technology, repairs and spare parts / complaints:

Telephone Monday–Friday
from 10 a.m. – 6.30 p.m.

Telephone **inland**: 0 90 01/6 08-2 22 (0.49 euro
per minute from the German fixed phone
network, mobile tariffs may differ)

Telephone **from abroad**: +49 (0) 71 61/6 08-2 22

Fax: +49 (0) 71 61/6 08-2 25

E-mail: service@maerklin.de

Internet

www.maerklin.de
club.maerklin.de

Moving?

Please inform us in good time of your new
address so we will know where we can
reach you. A forwarding address at the
Post Office unfortunately will not suffice.

Thank you for your cooperation!

Dear Insiders,

There was an enthusiastic reception and much praise for the new 2012 Märklin models at Nuremberg's International Toy Fair. Close attention was paid by the trade visitors to this year's Club models – the dynamic class 403 express electric rail car in H0 and the legendary standard class 001 steam loco in Z. For the unusual color scheme of the class 403, there was positive feedback from Insider Club members throughout. No wonder: Märklin went to a great deal of trouble to reproduce precisely the so-called "pop colors", and in this issue we tell you exclusively all about the difficulties of defining the colors.

And yet another classic is waiting for the Club members: this year, we are producing a fire department equipment truck in model form, and it is based on the Magirus-Deutz vehicles in service in the 1960s. The model is available in a one-off series only to Märklin Insiders – naturally in top quality die-cast metal.

The Märklin Desktop Publishing department (DTP) gives us a look behind the scenes: whether you want solid colors or authentic lettering, the finishing experts fulfill the highest quality demands. Then we are pleased to introduce Insider Round Table 5 Rhineland. and the Service section at the start of the holiday season gives a summary of all cooperation partners – five pages, with attractive conditions and reduced entrance fees. In addition, we give current dates for the digital info days. Enjoy reading your Club News!

Your Insider Club team

Imprint

Publisher

Gebr. Märklin & Cie. GmbH
Stuttgarter Str. 55–57
73033 Göppingen, Germany

Märklin Customer Clubs

Silvia Römpf (responsible)

Editorial

3G Media GmbH: Peter Waldleitner
(editor-in-chief), Lars Harnisch, Rochus
Rademacher, Lorelei Wiegand

Layout

Gerhard Baumann GmbH & Co. KG

Photographs

Unless indicated otherwise: Märklin Insider
Title: Kötze

No liability accepted for any dates given.

E 185190 – 02 2012 © by Gebr. Märklin

Club News is an exclusive part of this publication for Insider Club members. Subject to changes and delivery options for all the products mentioned here. All rights reserved. Reprinting in whole or in part only with prior written permission. This also applies for recording in electronic databases and duplication on CD-ROMs. The editor is not liable for any unsolicited submission of manuscripts, photographs or illustrations.



Extended warranties for Club models and MHI series from 2012

Märklin models are the tops and are often passed on from one generation to the next: the craftsmanship, the materials and the excellent finish have long been a guarantee for reliable running enjoyment. After all, a long life and inimitable quality are amongst the outstanding characteristics of Märklin products, and now model railroaders benefit twice over: "With confidence in our own brand quality, we are offering with immediate effect an extended warranty for five years. This applies both to Club models and to Märklin Dealer Initiative (MHI) models", states MHI business

sector manager Martin Dangelmaier. The new manufacturer's warranty is valid from 2012 – naturally including this year's Club models the class 403 in H0 (item 37778) and the class 001 in Z (item 88010). The warranty applies from the date of purchase from an officially-appointed Märklin dealer. Verification is either by way of a properly-completed guarantee certificate or the checkout receipt. The manufacturer's warranty then covers any claims arising as a result of manufacturing, design or material defects.

Added value: on the Club models and MHI series, Märklin now gives a five-year warranty.



**Join in and
win a superb
prize!**

Spring competition

Solid power and legendary sportsters, a terrific musical show or a fantastic world in miniature: Insiders can win some superb prizes in this year's spring competition once again. You only have to answer one question correctly: **In which German town is the musical Starlight Express playing?** (Hints can be found on page 23). The following prizes are on offer: entrance tickets for the Porsche Museum in Stuttgart, tickets to the musical show spectacular Starlight Express and entrance tickets to Miniature Wonderland, Hamburg. There is no charge for taking part in the on-line competition.

We wish all participants the best of luck!

This is how you can win:

Märklin Insiders can log in to the Club area under <http://club.maerklin.de> and under the menu point "Competition" enter the solution in the box provided for the purpose. **Closing date for entries is 20 May, 2012.** We will notify all winners in writing or by e-mail. Entries to the competition can only be made on line. Legal redress is excluded and there is no cash alternative to the prizes offered.

Notice: let us know your e-mail address and you'll get up-to-date information and news from Märklin and about the Club even quicker. This is most easily done on line under <http://club.maerklin.de> under "Preferences" Simply log in with your membership number and password on the Club pages and enter your e-mail address.



Great crowds: Märklin will be represented in Dortmund by super new models.

Insider model – star of the Intermodellbau in Dortmund

Märklin presents the model highlights for 2012

At the International Toy Fair in Nuremberg, there was plenty of appreciation for the Märklin Club models and new products for 2012; special favorite with the trade visitors was the class 403, and from 18 to 22 April, the Westfalenhalle in Dortmund will become the El Dorado for miniature fans. Whether model building kits, building components, tools or accessories, the model railroader will be able to find out about all the latest trends in his hobby at the Intermodellbau. Europe's leading exhibition for model construction and model sport presents familiar names from the sector and their latest products and services. This year too, the special meeting point for Insiders is once again the Märklin stand (Hall 4, Stand 4. A32). Railroad fans can look forward to the current model highlights and an original exhibition layout.

Opening times of the Intermodellbau are Wednesday to Saturday from 9 a.m. to 6 p.m., Sunday from 9 a.m. to 5 p.m. More info under: www.intermodellbau.de

A tip to get there: on Saturday, 21 April, freight train steam locomotive No. 52 8134 with special cars from the 1950s and 1906s runs from Siegen to Dortmund. Info under: www.nostalgiezugreisen.de

Benefits for Club members

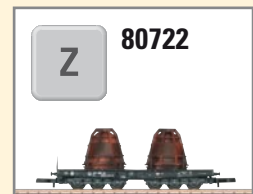
There is a reduction of 1.50 euro on the price of a day ticket to Intermodellbau for Insider Club members. Simply present your Club card at one of the day box offices and you pay less. For adults the entrance fee is then only 9.50 euro, and for young people (14 to 16 years), students, trainees and disabled persons, entrance is reduced to 7 euro.

On presenting their Club card at the Club stand, Insiders will receive a little exhibition present.



Special Car for Intermodellbau

For the Intermodellbau, Märklin is producing special cars in H0 and Z. This year, it is a six-axle heavy-duty flat car of type SSym 46 as it was on the Federal Railroad (DB) during era III, as running in around 1960, with signs of light repairs. The car is carrying a load of two slag ladles for transportation. The special cars will be produced as a once-only series and will only be offered during the Intermodellbau by dealers at the exhibition and in the Dortmund region.



40 years of Z gauge

Whether in a case, a cupboard or even a drawer, the cute electric Z-scale railroad unfolds its charms even in the tiniest space. The precision in 1:220 scale is impressive and so the smallest electric model railroad in the world celebrates its 40th anniversary this year. With the slogan "More railroad in less space", Märklin introduced the first delicate models to the market using 2-wire DC in 1972 and the "mini club" was born. Classics like the class 89 steam loco, the class 216 diesel loco and the class 003 tender locomotive were among the first models in the Z range, and many a railroad legend would follow these.



Quite exquisite: Z-gauge models have entranced for 40 years with their delicate appearance.



Z gauge was the center of attraction at the International Toy Fair as well. There was a special present for dealers there: the class 89 as a non-running display model.



Colorful looks: the pop colors lend the Club model 2012 a fresh and cheerful note and make it a real eye-catcher in H0.

Club model 2012 in H0: the class 403 color scheme

Color in play

Its cheerful looks bring a breath of fresh air to the layout: the class 403, Club model 2012, is impressive with its authentic paint scheme. To achieve the “pop colors”, Märklin thought up a few ideas.

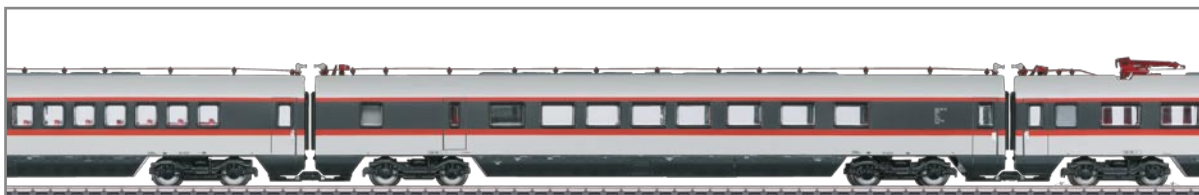
Model highlights

- Completely new design, heavyweight metal construction
- 2 high-efficiency motors with flywheel in the open-seating intermediate car
- mfx decoder with extensive sound and light functions
- Engineer's cab and interior lighting with LEDs

Between 1970 and 1974 the German Federal Railroad (DB) tried an experiment: new, fresh colors gave the rolling stock, up to then quite unremarkable, a chic image. Apart from the two-color TEE train vehicles, most of the locomotives and passenger cars were painted all over in single muted colors. The reason behind the concept with the “pop colors” was to get the idea over of a more friendly and modern railroad. Around 140 express

train passenger cars and class 420 electric powered rail cars and class 614 diesel rail cars were either delivered in the pop colors, or correspondingly repainted.

The basic color was a pale gray color, designated in the RAL register as pebble gray RAL 7032. Window strips in the strong colors of blood-orange, purple-red, red-violet, blue lilac, cobalt blue and chrome green gave an overall picture which was fresh and friendly. The



unusual color combinations were much appreciated by the travelers in the 1970s, though admittedly the pop colors didn't become standardized.

"Development of the class 403 came in the early 1970s. The modern and exclusive rail car train was included in the 'pop colors concept' in a modified form", explains Märklin documentarist Thomas Landwehr. The complete design was coherent, the shape and the color scheme matched nicely. "The special character of the rail car train as a self-contained vehicle is underlined by the dark window strip running all the way round", quotes Thomas Landwehr from a contemporary specialist publication. The brown window strip was framed by two orange stripes, which gave the train a sleek and futuristic appearance. The original DB paintwork drawings name the colors as follows: coach body pebble gray RAL 7032. Valance black-gray RAL 7021, Window strip black brown RAL 8022 lightened with blood-orange RAL 2002 in a ratio of 50:1, trimming stripes above and below the window strip a blend of equal parts of blood-orange RAL 2002 and pure orange RAL 2004. Blending these RAL colors into new color tones was unusual to say the least, and the Märklin developers thus had new challenges to face. "We had to decide how to achieve the colors in the model", explains Thomas Landwehr, "and we made a large number of trials in which the colors were mixed as per the painting drawings". All the results were applied to sample cards (see picture top right) and inspected by specialists from various departments within Märklin. The result was quite clear: the one percent admixture of blood-orange RAL 2002 to the black-brown RAL 8022 in H0 scale made no perceptible difference when compared with the pure black-brown RAL 8022. By contrast, the 50-50 mixture of blood-orange RAL 2002 and pure orange RAL



Trial series: rail historian Thomas Landwehr compares a number of color sample cards to achieve an authentic mixing ratio of the RAL colors for the Club model.



Unusual paintwork

During their career as the "Lufthansa – Airport – Express" from 1982, the units exchanged the earlier color scheme for another just as special: the Lufthansa house colors. Underfloor components of the class 403 were painted in RAL 8019 gray-brown and the coach bodies in RAL 7035 light gray. The body side below the waist was colored RAL 1028 melon yellow. The adhesive lettering for the logo and the crane were in RAL 5022 night blue. This elegant color combination, which corresponded very closely with the painting of the Lufthansa airplane fleet, was to be retained by the vehicles until their withdrawal in 1993.

An unusual appearance: the class 403 ran for some 11 years in the Lufthansa look.

**Don't delay,
order today!**

The dark colored window-strip with the two orange borders lends the class 403 a futuristic appearance.

H0



2004 resulted in a distinctly different orange tone. "So the black-brown window strip will be realized without the admixture while the orange for the trimming stripes will be made up of a blend of the two orange tones" says Thomas Landwehr, explaining the model production procedure. And the result is worth seeing: the express rail car train is truly a feast for the eyes and the successful color concept will brighten up any H0 layout.



Highlight on rails: for Ulrich Klumpp, the class 403 is a model dream come true.

Extravagant Club models
Timeless elegance, successful design, top technology: Insiders are thrilled with the new 2012 Club models in H0 and Z. "The new, modern trains of class 403 were once stationed in the Munich Main Station depot – only ten minutes away from where I lived", as Insider Gerhard "Obelix" Hirmer from Munich recalls. On Thursday afternoons there was a guided tour, and he even went on the train on some of its shunting trips – for the dyed-in-the-wool railroad fan an unforgettable experience. "I am totally thrilled that this year Märklin is producing this legendary rail car train as a Club model". The man from Munich is especially fascinated by the delicate detail work and welcomes the fact that its slightly shorter-than-scale length guarantees operating safety on his own H0 layout at home. "I



Model railroader Gerhard Hirmer praises the delicacy of the 2012 H0 Insider model.

can scarcely wait to get hold of it and put it the rails and run it", he says. Praise there is for the design too: "The train looks extremely dynamic – and it's only right that the Club model should have two motors fitted". Ulrich Klumpp from Speyer also sees a long-held model wish of his being fulfilled: "A train which is extravagant and unmistakable not only from the outside – for me, the model of the class 403 is a highlight on rails, and I'm looking forward to it enormously".

The fact that the prototype was in service for such a short time makes the model that much more interesting, and not just for rail car train fans. "The authentic model promises running enjoyment in traditional Märklin quality. I find



For Holger Späing the class 001 is a worthy Insider model in Z.



Setting new standards: the class 001 scores as Insider model in Z with its finely-detailed valve gear and exquisite engineering.

the collector changeover which helps to stop the train overrunning signals in layout operation particularly good" is the verdict of MIST67

member Klumpp on the H0 Club model for 2012.

Z-gauge fans too have given this year's Club model an enthusiastic welcome: "There couldn't have been a better choice to celebrate the 40th anniversary of the Mini Club than the class 001", opines Z-gauge expert Holger Späing from Dortmund (www.trainini.de). The elegant and fast standard locomotive did after all usher in a new era in steam locomotive design. With the DRG show-

piece locomotive, Märklin has brought off a master-stroke: "The complete valve gear and the many details of the model make the class 001 the queen of the mini club and it sets new standards in Z-gauge".

Text: L. Wiegand

Photos: H. Seehuber, Märklin, Kötzle, Eisenbahnstiftung/J. Bügel

Notes on ordering

You can order an example of the Insider model with the order form which was enclosed with issue 01/2012. Look through the Insider shipment for it again. **Should you no longer be able to find your order form, or if you did not receive Club mailing number 1, you are welcome to ask for a replacement by e-mail under insider-club@maerklin.de or by telephone under +49 (0) 71 61/6 08-2 13.** Please note: order forms are not transferable. The models will be produced in 2012 in a one-off series exclusively for Insider Club members. The models are scheduled to be delivered starting in the 4th quarter of 2012.

Advertising models February & March 2012

H0

4415.545 "GALLIA"

Available exclusively at Au Pullmann, 70,
Rue d'Amsterdam, F-75009 Paris, France
aupullman@aupullman.com


4415.547 "AVNET" *

Avnet EMG GmbH, 85586 Poing, Germany

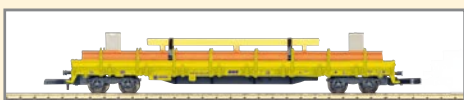

46557.001 "Ermewa" *

Ermewa SAS, 10969 Berlin, Germany


47561.002 "BASF"

47561.003 "BASF"

BASF SE, Heidi Vetter, Tel. +49 (0) 6 21/60-4 33 04

Z

98108 Flat car "MWB"

**98109 Heavy-duty flat car
"MWB" with power shovel**

Z Club 92, www.zclub92.com,
service@zclub92.com

Please note:

Promotional models are only manufactured for Märklin dealers or industrial companies etc. (the latter are marked with a *). Normally models marked with a * are not offered for sale and for this reason, no addresses are given. Only models already delivered to the respective customer may be publicized, and only when the customer has given explicit permission for this.

Digital info days

Märklin dealer for the event

Date

Time

Germany:

| | | |
|---|------------|---------------|
| 55576 Sprendlingen, Gertrudenstrasse 23 – 25, Fränkis Bahnladen | 01.06.2012 | 10.00 – 18:00 |
| 72764 Reutlingen, Metzgerstraße 13, Eisenbahn-Treffpunkt Schweickhardt | 27.04.2012 | 10.00 – 18:00 |
| 74072 Heilbronn, Allerheiligenstrasse 8, Hobby-Eberhardt | 26.04.2012 | 10.00 – 18:00 |
| 74523 Schwäbisch Hall, Kornhaus Straße 7 – 11, City Markt | 11.04.2012 | 10.00 – 18:00 |
| 79215 Elzach, Schmiedgasse 8, Herbert Haas | 08.05.2012 | 10.00 – 18:00 |

Ask your Märklin dealer about the break for lunch!



Retro in red: model of the Magirus-Deutz round hood, the very symbol of firefighting.

Exclusively for Insiders: fire department equipment truck as a model

Fire and flames

The legendary "round hoods" by Magirus-Deutz are popular photographic subjects as exhibits in automotive museums. A fire department equipment truck by the Ulm company will be appearing in 2012 as a model in die-cast metal – exclusively for members of the Insider Club.



Playing with fire: the model of the fire department equipment truck scores with many details such as the removable ladder in metal. In addition, footsteps, fenders and blue light are all picked out in color.

Round and robust: that's what Magirus-Deutz fans all over the world value in the classics of German fire service vehicle production with names like Mercur, Saturn and Jupiter. Insiders and fans of the collectors' pieces, today much-sought-after must wait and see: this year, Märklin is producing a model of a fire department equipment truck in approximately 1:43 scale exclusively for Insider Club members. Prototype will be the round-nosed vehicles produced by Magirus-Deutz between 1950 and 1960.

Symbol of the firefighting industry

After the World War I, the foundations were laid for the modern firefighting industry, although it would take until just before WWII until technically advanced and improved firefighting vehicles were developed. Then from 1951, the unusual round-nosed trucks from the Cathedral City of Ulm conquered the market. The company delivered special-purpose trucks to the Technical Relief Agency (THW), the Red Cross and fire services. Significantly, the company produced motors, chassis, crew-cabs and bodywork

Closing date for
orders:
April 30, 2012

18038 Fire Department Equipment Truck



Prototype: Magirus-Deutz curved hood truck with equipment superstructure.

Model: The superstructure and cab are constructed of die-cast metal and the floor is of sheet steel. The ladders are constructed of metal and are removable. The metal wheels are turned parts with rubber tires. The running boards, bumpers, and blue warning lights are picked out in color. A certificate of authenticity is included. Length 15.5 cm / 6-1/8".

■ Model highlights 18038

- Late realization of a vehicle planned in the past yet not produced until now.
- Metal superstructures.
- Perfect add-on to the five-part series of replica vehicles (18023, 18032, 18031, 18034, and 18029).
- Certificate of authenticity included.
- Cardstock packaging in a historic design.

Every Insider member can submit his order form to his MHI retailer to order an example of this model.

The order form was sent out with the Insider News issue 01/2012. We explicitly draw your attention to the fact that Insider order forms are not transferable. Model 18038 will be produced in 2012 in a one-off series only for Insider Club members. Each model is accompanied by a certificate of authenticity.

Please note the closing date for orders as given on the order form: 30 April 2012. Deliveries are scheduled to start in the third quarter of 2012. Should you no longer be able to find your order form, or if you did not receive Club mailing number 1, you are welcome to ask for a replacement by e-mail under insider-club@maerklin.de or by telephone under +49 (0) 71 61/6 08-2 13.

as well as a complete range of equipment for the fire department vehicles itself – unique in those far-off days. The “round hoods” served as the basic vehicle for fire department fittings, like extending turntable ladders, for crane trucks as well as for fire squad tenders and equipment trucks. The reliable and powerful vehicles quickly helped the Swabian company to become undisputed leader in the market for motorized firefighting, as well as its backbone. The commercial vehicle manufacturer extended its main business activities into medium to heavy commercials – the “round hoods” were internationally the most widely produced fire department vehicles of the post-war era – and they became the symbol of the fire-fighting industry. For many years after production ended in the early 1970s, the Magirus-Deutz rounded hoods continued to characterize traffic on the roads. Today, these old-timers are mostly seen in fire department museums and in historical fire stations, and most of them are still fully serviceable.

Text: L. Wiegand / Photos: Kötze, Märklin

Here you can see some originals:

- www.rundhauberfreunde.de
- www.oldiveco.de
- www.stuttgarter-feuerwehrmuseum.de
- www.magirus-bayern.de



The model of the fire department equipment truck will be delivered in a cardboard package of historical design.

Hi-tech for painting and printing

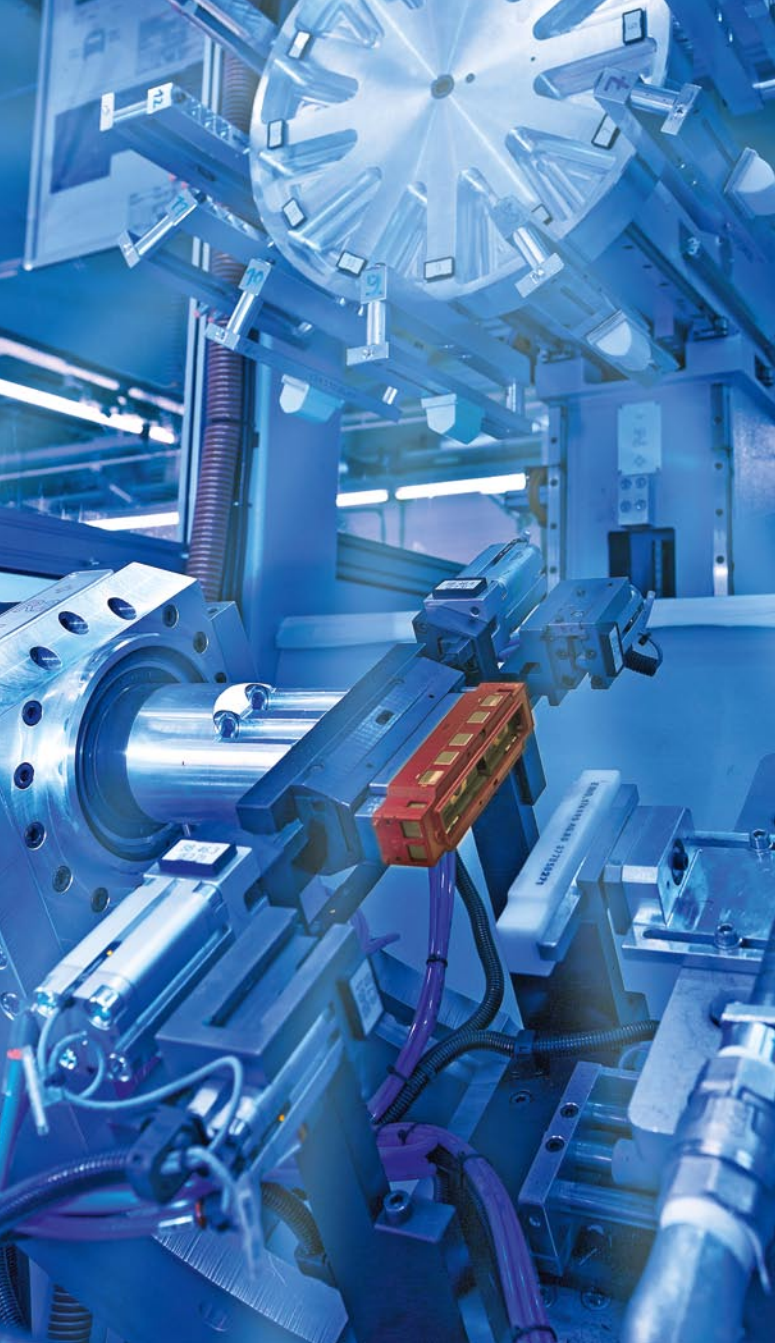
The art of painting

A model belongs in the colors of its prototype – that is a fundamental rule at Märklin. And a challenge too: the finishing specialists give you an insight into the concept stage, and in the next issue they bring you a report on the machinery used.

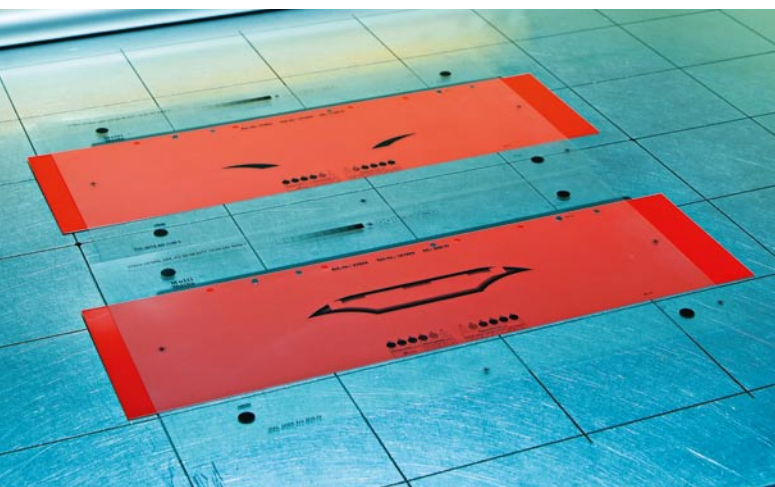
“Painting is one of the most important features of a model railroad article; as a final layer, it rounds off the attention to detail specified by the design”, says Michael Ludwig, responsible at Märklin for finishing and painting. The expenditure is enormous: even for a perfectly normal loco, 30 to 50 printing operations are necessary, and there are exceptions which require double the number and more. But plans are being made long before spray guns, pad printing rams and paint brushes for painting, lettering and varnishing are brought into action. “There is often two year’s work between the initial idea and the production order”, says finishing specialist Ludwig, giving us an insight into the concept phase. Product management first places the development order and then feasibility and likely costs are investigated. When the decision is made, in a second stage, an information file is circulated throughout all the production departments and each of the departments defines the working stock required and sends these requirements to the design and tooling departments.

“A flow-chart in the information folder illustrates by when each step in the working process has to be ready – a loco consists of up to 300 parts, so every working step in the production process has to be properly integrated”, explains Michael Ludwig. The delivery date for the loco – internally known as “prime requirement” – determines when production has to be started. Regular meetings with Product management, Documentation, Development, Production and Quality assurance keep track of the production process.

The lettering and painting of a locomotive or a piece of rolling stock is thought through in minute detail. “The managers of the paint shop clarify when which pieces have to be available, they plan machine occupancy and working stock”, continues Klaus Schwichtenberg, responsible in the DTP department (Desktop Publishing) among other things for the painting and lettering finishing of models. “We reproduce the appearance of the original 1:1 in the model. Graphic and picture data, lettering and coloring are worked up – we effectively collate design and documentation into an overall picture”. The experts are well aware what’s



VT 75.9 under pressure: the print center for pad printing carries out up to 36 printing operations in sequence with eight different colors.

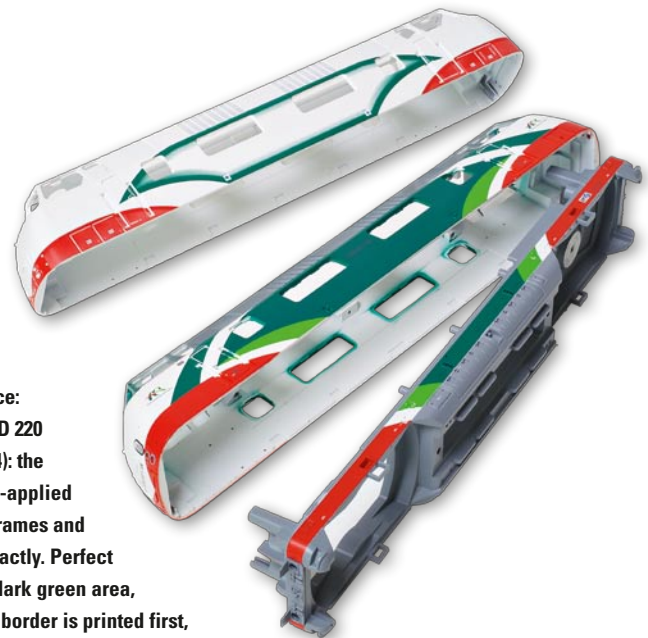


Offset film for the D 220: the appropriate printing plate applied to the loco side makes sure the color later sprayed will have a sharp edge (see p. 13).

waiting for them at first glance: "This year's H0 Club model, the class 403 for example, took us to the very limits of printing technology with its enormous length and three-dimensionality of the rail car, and the decorative stripe around the end was once more a real challenge, due to the geometry of the actual part".

Initial work is carried out by Documentation, where they assemble color-relevant facts on the prototype and deliver precise timings, plans, photos or drawings of the lettering. If a prototype still exists, the researchers will climb all over the locos or wagons: the original colors are matched with color swatch fans and recorded as color specifications. In the drawings of the DB or foreign railroad administrations, colors are mostly specified – the majority in coordinates of the RAL color system, though other color catalogs such as Pantone, HKS or NCS are also popular. In some more unusual cases, like bleached out colors, the experience of DTP-expert Schwichtenberg really counts: "I know how a color reacts to light, and for mixed colors, Documentation and color section work under the leadership of Product managements to reach a compromise".

The pre-printing stage prepares printing data for the model from prototype information. Font type, size, colors and positioning of the railroad lettering, plaques and company logos are all reproduced exactly to scale as on the original. The printing specifications are the basis for production-relevant lettering and parts drawings as well as for the printing-plate production, as Klaus Schwichtenberg explains: "The print contents thus prepared are transferred photo-chemically onto a light-sensitive printing plate using a specially prepared offset film. Exposed areas harden out, areas not exposed stay soft and are then washed out with a special alcohol solution. What is left is a recessed printing pattern for the indirect gravure process". Manager Michael Ludwig and his painting team, made up of work planners,



Masterpiece:
the Italian D 220
(item 37804): the
separately-applied
colors of frames and
body fit exactly. Perfect
too is the dark green area,
where the border is printed first,
then the fill-in surface is sprayed.

arrangers and machine setters, have the entire process firmly under control: they decide which parts of a model are lettered or partly sprayed and when, protected with precisely-fitting stencils made by the toolmakers. They monitor pre-assembly, hand-painting and when lettering is applied and in what order. Foremost criteria are quality and efficiency: "We always keep an eye on the market for new technologies with which we can manufacture our products even better and more environmentally friendly". Märklin is also investing continuously in its machinery "and with standards we can always re-plan flexibly, even between our factories".

In the next issue: what models give away with quality of the painting and precision of the lettering.

Text: Rochus Rademacher
Photographs: Kötzle



Michael Ludwig, Manager surface finish / painting: keeps an eye on all working stages from galvanics to painting.



Klaus Schwichtenberg, DTP department: lays down the specifications for color design of a model on the basis of data and facts relating to the prototype.



Portrait: Märklin Insider Round Table 5 - Rhineland

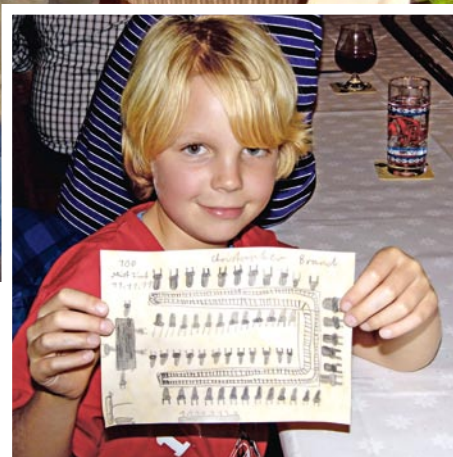
Wikipedia of the model railroad

All together, they are a virtual encyclopedia of model railroading: MIST5 has experts of all descriptions. But it's never dry as dust at the meets: the sociable Rhinelanders are there for fun – as evidenced by the attendance at the 100th round table.

Studying the attendance list, Oliver Schlauch is a bit taken aback: "Sometimes more people come to the meet than actually said they would". Today is a "sometimes" – for the 100th round table, almost 60 of the MIST5 Rhinelanders make it a bit of a squash in the usual local. But that worries no-one in the Rheinischer Hof: it's just the way things are. "Almost a full house – we're actually just over 80 in total; we have a hard core of about 35", MIST5 spokesman Schlauch tells us. It is he who organizes the Märklinists meet, which has now been going for nine years. But mostly, things organize themselves: to meet, to chat, enjoy

oneself – what applies for model railroaders here is like a coffee-kiosk mentality – it's carried in the genes.

"Originally, it was all about exchanging experience; we hoped model railroaders would get together and help each other, says collector Schlauch, as he looks back to the early days. "Those hopes were fulfilled; parameters like layout construction, electrics, digital modifications, landscape design and control with a PC have combined to form an impressive circle of experts". That's how discussions, tips for layouts, operation and rolling stock come to dominate subjects in the everyday round table matters; new Märklin



Full house: MIST5 on its 100th Round Table meet – Christopher Brand, member of the Märklin Kids Club, has drawn out the track plan for the anniversary table running lines.

Treasures and favorites:
from the DT 800 (right) and
the 103 (p. 15 far right) to
the class 03 (p. 16) – at
MIST5, everything they like
is collected, everything is
run, as long as it belongs in
the region.





All straight: MIST5 co-organizer Oliver Schlauch tests one of the two reversing loops on the long, horseshoe-shaped centenary meet table with a spirit level ...



... and if you're already sitting, you can join up some rails: a little later, a 56-car train, including every Annual Car so far produced, parades past the Rhinelanders.

products are put to the test and the results are presented. A mischievous Clemens Jüssen claims "We are something like the Wikipedia of the model railroad". We also have proven loco mechanics like Thomas Metz and Uwe Schwierzke ("If it doesn't need soldering, we'll repair it instantly").

Rhenish companionship at its best – they know each other, they help each other. And for all this, they travel: the catchment area stretches from Bonn to Mönchengladbach and from Aachen to Siegen. The longest trip is that of Willi Günzel, who despite having moved to Dresden still attends regularly. "That's how we do it in Cologne", says a smiling spokesman Schlauch, who isn't at all surprised that trips are seldom organized: "We just want to get together informally once a month and sit around chatting with our friends and generally having a good time". No doubt at all, MIST5 is made up of people who love to chat and who like to be the last to leave too.

In the meantime, the waiter – indeed, it's actually the landlord – has appeared and is circling the tables, arranged in a huge horseshoe-shape, to take the orders. First on the menu is dinner. The first to arrive set up a circle of track, so that later arrivals can start running their locos and trains – the collectors in particular appreciate being able to give their display models a little run. Subjects for the round table are collected via the MIST5 online forum. Anyone can put forward ideas, and give a talk if they wish, be it on railcars, railroad service wagons, Märklin's digital system, looking after your locomotive or laser-cut building kits. For the 100th round table meet, the table usually set up at the end of the room for the rolling stock is missing; on this auspicious occasion, MIST5 organizes a little Long Train Event instead: "Several 'Crocodiles' are hauling a 56-car train around the circle of track, and the train includes every one of the Cars of the Year so far produced", Schlauch reports. Quickly, practiced hands assemble turning loops at each end of the giant horseshoe table, and thanks to the spirit-level app on a smart-phone, it's all on the level. Stacks of C-track to put the line together are passed along the tables, and the youngest one there thinks ahead: eight-year-old Christopher Brand has designed a track layout in a flash. The rolling stock is all put on the rails, and then the imposing anniversary train has the signal to start – best of luck!

The fun from details: ideas for authentic loading of freight trains (picture left) the MIST5 members glean from the freight yard at Cologne Eifeltor among other places.





MIST5 trip: steam loco 5t "Regenwalde", of the Selfkant Railroad does a spell on the Brohl Valley Railroad.

"We all have a great affinity for Märklin", says Oliver Schlauch. "In Bochum, when I was young, I had steam engines right under my nose and naturally, I had to have them in miniature too". Today, the analog models from his father's collection are in display cabinets. Clemens Jüssen had to overcome stern resistance from his mother to gain his freedom as a model railroader "and I've never looked back", as he says with pride. What MIST5 spokesman Schlauch values above all with Märklin is the

robustness and quality of the metal finishing: "A real locomotive is made of metal – so Märklin for me became the synonym for model railroads".

The openness and the cozy atmosphere of the Rhinelanders has become well known: many "multi-MIST" members come along to MIST5 as well; like Thomas Hövel of MIST53 from Siegburg; MIST Mittelrhein in Rheinbreitbach is represented, the left-Rhine MIST51 or MIST47 from Kamp-Lintfort as well as MIST4 from Essen. In the other direction, MIST5 members who have time to spare between their monthly meets also show themselves at other round tables. This networking is mutually profitable. This is how Martin Böhmer, as the link-man to the Mainz MIST55, managed to import the module virus. "He owns the connection from the Mainz reversing loops via the MIST51 'Pub modules' to the modules which we are just building", explains Oliver Schlauch. "At module meets, we want to be able to put an "inter-MIST" modular layout together". And then they can all send their local favorites out on the road, like the class 39 and 78, the Rheingold or the Thalys.

Text: Rochus Rademacher / Photographs: Maria Böhmer, Oliver Schlauch, Andreas Weiler, RR

Trio in the lead (bottom, left): the three "Crocodiles" in charge of the 'carnival procession' in honor of the 100th round table pass the MIST5 centenary car.



An expert opinion: inspecting a MIST5 module.

Description Märklin-Insider Round Table 5

The round table

"The catchment area for the Märklin-Insider Round Table MIST5 Rhineland covers the lower Rhine and stretches into the Ruhr area", explains MIST5 spokesman Oliver Schlauch. On average, the monthly meet – always on a Friday – numbers up to about 35 participants. Over 80 model railroad enthusiasts are registered. "We enjoy open and lively discussions about our hobby. The range of subjects we talk about covers everything from A for anything to do with layout building to Z for Z-gauge". The agenda for tonight includes an evening meal together, test running on a circle of track and everything else to do with the model railroad world. Dates are published on the round table home-page www.mist5.de. Contact: Oliver Schlauch, tel.: + 49 (0) 2 28/3 72 81 77, e-mail: oliver.schlauch@t-online.de

The history

The first meeting of MIST5 took place at the invitation of Norbert Burkert on 7 February 2003. "The very first night, there were 25 people there", Oliver Schlauch relates of a promising start. The group grew very quickly, and has remained true to their regular meet, the Rheinischer Hof in Bedburg. The principles: no club formalities, no membership fees, no compulsion to attend – just lots of fun.

Layout and module design

Many MIST5 round tablers have their own stationary layouts and the expertise in layout, track and landscape design and construction is correspondingly extensive (see "Tipps & Tricks" under www.mist5.de). To be able to get together with other like-minded Insiders, an H0 modular group has been formed and its standards broadly follow the handbook of the REMOS (www.reviermodule.de).

Sights worth seeing

If you're looking for prototypes to give you ideas for your own layout, MIST5 has plenty of them. "To start with, the Rhine left-bank freight depot at Cologne-Eifeltor is Germany's biggest container depot for intermodal (road-rail) freight traffic" says Oliver Schlauch temptingly. Here there are all manner of private locomotives to be seen apart from DB locos, such as those from HGK, MWB, SBB Cargo, RSB, TXL and other foreign railroad companies. And the Rhine right-bank operations depot Cologne-Deutzerfeld immediately occurs to Clemens Jüssen, with its carriage repair shops and the turntable, which formerly boasted 37 exit roads: "There are still interesting trains prepared there, including ICEs and naturally the 'Thalys'."

"If you want to experience a narrow-gauge railroad, you'll get value for money at Brohl-Lützing", says Schlauch. This is where the "Volcano Express" runs from the Rhine through the volcanic valley of the Brohl up to the Eifel Hills at a speed of 20 km/h (12 mph) (www.brohlalbahn.de). There's an even steeper line in the "Seven Hills", where a rack railway has been plying the Drachenfels from Königswinter since 1882 (www.drachenfelsbahn-koenigswinter.de). "This has a stupendous view of the Rhine Valley and the Rhine right-bank line with its busy freight traffic".



Insider Round Tables

We support your »Insider Round Tables« by providing the appropriate platform. We can however only accept addresses for non-commercial meetings of Märklin Insider Club members. We do not publish any advertising or offers from commercial model railroading clubs. Neither do we accept any liability for the correctness of any information, contents or composition and continued existence of a round table. The addresses that are published are those of round tables in existence, or of persons interested in setting up such a round table. We do not differentiate here and ask the reader to contact the person concerned for further details. Please understand that no address can be disclosed over the phone, by fax or by e-mail.

A Big Favor please:

Please notify us of any changes (moved, closed down, etc.) for the addresses given here.

NEW

- **13409** Berlin, Sven Richter, Tel.: +49 (0) 171/3 19 07 52, www.mist1.de, info@mist1.de
- **21365** Adendorf/Lüneburg, Wolfgang Merhof, Tel.: +49 (0) 41 31/188069, huw-merhof@t-online.de
- **21493** Kreis Herzogtum Lauenburg, G. Schöne, R. Schmidt Tel.: +49 (0) 41 56/391, +49 (0) 45 42/6642, lokprofi43@web.de
- **22419** Hamburg, Heinz Luecke, Tel.: +49 (0) 151/19 16 66 19, www.hamst.de, info@hamst.de
- **23552** Lübeck + 24103 Kiel, Peter Wulf, Tel.: +49 (0) 43 81/74 17, www.mit-nord.de, insidertreff-nord@gmx.de
- **23556** Lübeck, Am Grenzwall 20/22, Volker Scharf, Tel.: +49 (0) 451/49 51 68, volkerscharf@foni.net und Reiner Wegner, Tel.: +49 (0) 451/4 99 15 62, www.mit-stammtisch-luebeck.de
- **23879** Mölln, Michael Koop, Tel.: +49 (0) 45 42/8 61 70
- **24114** Kiel, Winterbeker Weg 49, Haus des Sports, Hans-Ulrich Druske, Tel.: +49 (0) 45 21/7 00 70, hans-ulrich-druske@t-online.de und Rainer Schlempe, Tel.: +49 (0) 172/5 43 23 02, rainer.schlempe@gmx.de, <http://modulbauimteam.de>
- **25541** Brunsbüttel, Jörg Wagner, Tel.: +49 (0) 48 52/53 37 35
- **25980** Sylt OT Rantum, Michael Maenss, Tel.: +49 (0) 46 51/2 23 48, mikkel@t-online.de
- **28870** Ottersberg, Wümmeweg 11, Lothar Walter, Tel./Fax: +49 (0) 42 05/81 41
- **31582** Nienburg, Carsten Heling, Tel.: +49 (0) 50 21/6 00 29 49
- **31832** Springe, Käthe-Kollwitz-Str. 21, Holger Kehrstädt, Tel.: +49 (0) 50 41/97 14 15, Deister-Ice@gmx.de, www.mist-hi.de
- **32257** Bünde, Nelkenstr. 4, Hans Bechinka, Tel./Fax: +49 (0) 52 23/4 34 16
- **32312** Lübbecke, Alfredstr. 15, Hermann Ramm, Tel.: +49 (0) 05 71/23 03 53, h.w.ramm@web.de
- **33378** Rheda-Wiedenbrück, Torsten Piorr-Marx, Tel.: +49 (0) 170/89 61 58, anmeldung@mist-owl.de oder torsten.piorr-marx@mist-owl.de, www.mist-owl.de
- **34277** Fuldabrück, Manfred Mayer, Tel.: +49 (0) 56 65/28 93, M.Baer@t-online.de, www.kist-nh.de
- **34560** Fritzlar-Geismar, Eichgarten 12, Alexander Hebler, Tel.: +49 (0) 172/68 76 943, www.insiderstammtisch-geismar.piczo.com, alexander_hebler@freenet.de
- **38100** Braunschweig, Volker Friedrich, Tel.: +49 (0) 58 48/98 10 52, mist3@mist3bs.de, www.mist3bs.de
- **41462** Neuss, Rainer Pucher, Tel.: +49 (0) 172/2 06 98 91, igel47@gmx.de
- **42275** Wuppertal, Torsten Jahnke, Tel.: +49 (0) 171/9 33 30 50, MIST42@t-online.de
- **44141** Dortmund, Martin Meese, Tel.: +49 (0) 231/43 56 86, martin_meese@hotmail.com, bernd.knaak@uni-dortmund.de
- **45472** Mülheim a.d.R., Kolumbusstr. 110, Krug zur Heimate, Hanno Brünninghaus, Tel.: +49 (0) 201/60 82 61, www.stammtisch-ruhrpott.de, info@stammtisch-ruhrpott.de
- **47259** Duisburg, Trierer Str. 10, Hardy Paschen, Tel.: +49 (0) 177/301 57 08, hardy.paschen@gmx.de, www.mist-du.de
- **47475** Kamp-Lintfort, Heinz-Dieter Papenberg, Tel.: +49 (0) 28 41/5 11 32, www.mist47.de.vu, HPapenberg@aol.com
- **48076** Münster, Postfach 470243, Christian Schmidt, Tel.: +49 (0) 25 82/66 96 99, mist.ms@t-online.de
- **50181** Bedburg, Neusser Str. 2, Restaurant-Hotel Rheinischer Hof, Oliver Schlauch, Tel.: +49 (0) 2 28/3 72 81 77, www.mist5.de, oliver.schlauch@t-online.de
- **51103** Köln, Ilmenauer Weg 11, Achim Kube, Tel.: +49 (0) 177/1 62 88 60, www.mist51.de, achimkube@ish.de
- **53619** Rheinbreitbach, Eifelblick 28, Jens Arenberg, Tel.: +49 (0) 170/2 07 77 22, mist-mittelrhein@web.de
- **53721** Siegburg, Fröhliche Eisenbahner, Thomas Hövel, Tel.: +49 (0) 160/1 20 41 24, <http://fe.mailerz.de>, fe@mailerz.de
- **54329** Konz-Kommlingen, Donatusstraße 5, Günter Schröter, Tel.: +49 (0) 65 01/1 22 80, guenterschroeter@aol.com
- **54338** Schweich, Schlehenweg 2, Joachim Schlöder, Tel.: +49 (0) 65 02/96 92 80, JoachimSchloeder@t-online.de
- **55126** Mainz, Am Kirschborn 20 F, Stephan Türk, Tel.: +49 (0) 61 31/47 67 71, tuerk@mpip-mainz.mpg.de & Stefan Claus, stefan.claus@online.de
- **56843** Irmenach, Fehlenacher 1, Klaus Luers, Tel.: +49 (0) 65 41/24 24, Luershome@t-online.de, Tel.: +49 (0) 65 42/96 39 46, Wagner-neef@t-online.de
- **57567** Daaden, Mittelstr. 8, Axel Schmidt, Tel.: +49 (0) 27 43/93 36 60, info@modellbaumeyer.de
- **58507** Lüdenscheid, Brinker Höhe 21, Heiko Becker, Tel.: +49 (0) 23 51/56 81 53, becker888@freenet.de
- **59757** Arnsberg, Wiedhofstr. 7, Heinrich Franz Hecker, Tel.: +49 (0) 29 32/63 92 94, hfh.abg@t-online.de
- **63179** Hausen, Seligenstädter Str. 45, Ralf Krapp, Tel.: +49 (0) 61 04/7 12 73, ralf.krapp@t-online.de
- **66130** Saarbrücken, Saargemünder Str. 154, Burkhard Eins, Tel.: +49 (0) 681/8 73 95 07 und +49 (0) 178/5 56 94 62, eins@htw-saarland.de
- **67346** Speyer, Eselsdamm 8, Ulrich Klumpp, Tel.: +49 (0) 62 32/67 77 41, Fax: +49 (0) 62 32/67 77 42, uklumpp@web.de, www.mist-rhein-neckar.de
- **70374** Stuttgart, Mark Kaipl, Tel.: +49 (0) 71 23/95 32 57, mkaipl@mist7.de
- **70806** Kornwestheim, Guido Wettemann, gwettemann@mist7.de
- **72800** Eningen unter Achalm, Arbachtalstr. 6, Horst Boßler, Tel.: +49 (0) 157/87 54 19 66, www.mist72.de, mist72@mist72.de
- **78647** Trossingen, Schulstr. 24, Gerhard Kresser, Tel.: +49 (0) 74 25/32 66 66 und +49 (0) 175/1 61 52 93, gerhard.kresser@web.de
- **79117** Freiburg, Manfred Grimm, Tel.: +49 (0) 7 61/79 69 71, grimm-manfred@web.de
- **79312** Emmendingen, Nelkenweg 4, Eugen Schrempf, Tel.: +49 (0) 76 41/39 45
- **85250** Oberzeitelbach, Lindenstr. 12, Franz Koch, Tel.: +49 (0) 82 54/17 18, LumpiMarok@aol.com
- **85435** Erding, Karlstr. 1 a, Ludwig-Josef Eglinger, Tel.: +49 (0) 81 22/61 16, eglinger@web.de
- **88630** Pfullendorf, Schillerstr. 40 a, Peter Scherer, Tel.: +49 (0) 75 52/92 94 15, spielzeugscherer@freenet.de
- **89073** Ulm, Falk Dehnert, Tel.: +49 (0) 73 48/2 31 30, www.ulm-mist.de
- **90579** Langenzenn, Falkenstr. 32, Georg Schönfelder, Tel.: +49 (0) 170/98 44 57 0, kontakt@frist9.de, <http://www.frist9.de>
- **97486** Königsberg, Alleestraße 1, im Volksbildungswerk 2. Stock, modellbahnclub mist 97, Alexander Fasslrunner, Tel.: +49 (0) 177/801 61 20, info@mist97-koenigsberg.de
- **97794** Rieneck, Brunnenweg 2, Michael Hermann, Tel.: +49 (0) 171/2 13 28 09, www.mist-im-msp.de, stammtisch@mist-im-msp.de
- **A-1000** Wien, Tel./Fax-Box: +43 (0) 1 59 27 28, <http://www.insider-stammtisch.net>, insider-stammtisch.net@aon.at
- **A-1090** Wien, Walter Leditzky, led@brg19.at, www.wiener-z-stammtisch.at
- **A-6200** Jenbach, Schalsenstr. 7e, Top 13, Ingo Loske, Tel.: +43 (0) 06 60/5 68 06 52, ingoschmidt.husum@freenet.de
- **CH-3904** Naters, Sonnhalde 9, Werner Baier, Tel.: +41 (0) 27/92 49 20 0, margit.baier@bluewin.ch
- **CH-8320** Fehraltorf, Ueli Schwizer, u.schwizer@greenmail.ch und Rainer Lüssi, rainer@luessi.ch, www.stayathome.ch/helis.htm
- **CH-6037** Root, Postfach 123, Märklin-Freunde-Zentralschweiz (MFZ)

NEW

NEW



The Märklin Insider cooperation partners

As an Insider, you qualify for many discounts – here is an overview of your benefits as a Club member.

| Name | Your Club benefits |
|--|---|
| 01067 Dresden, Transport Museum, Dresden , Augustusstr. 1 Tel.: +49 (0) 3 51/8 64 40 info@verkehrsmuseum-dresden.de, www.verkehrsmuseum-dresden.de | Insiders pay the group adult entrance fee of 3 euro |
| 01187 Dresden, Dresden-Altstadt depot railroad museum , Leisure Group of the BSW Foundation, Zwickauer Str. 86, tel.: +49 (0) 1 62/7 83 86 03 joerg.baumgaertel@dbbahn.com, www.igbwddresdenaltstadt.de | Reduced admission, 2 instead of 3 euro, for an adult (higher entrance fees charged for special events) |
| NEW 01824 Rathen, Trainworlds in Kurort Rathen , Elbweg 10 Tel.: +49 (0) 3 50 21/5 94 28 info@eisenbahnwelten-rathen.de, www.eisenbahnwelten-rathen.de | Insiders receive a discount of 1 euro on the regular entrance fee and a 2 euro reduction on the family ticket |
| NEW 01829 Stadt Wehlen, Miniature park "The Little Saxonian Switzerland" , Schustergasse 8, Ortsteil Dorf Wehlen, tel.: +49 (0) 3 50 24/7 06 31 info@kleine-saechsische-schweiz.de, www.kleine-saechsische-schweiz.de | Discount of 1 euro on the regular entrance fee and of 2.50 euro on the family ticket |
| 02943 Weisswasser, Muskau Forestry Railroad , Jahnstr. 53 A Tel.: +49 (0) 35 76/20 74 72 wem.gmbh@waldeisenbahn.de, www.waldeisenbahn.de | Travel on the railroad at a reduced rate (children's fare) for advertised trips |
| 06484 Quedlinburg, Central German Railroad and Toy Museum , Blasiistr. 22 Tel.: +49 (0) 39 46/9 01 95 26 or +49 (0) 39 46/37 51 info@eisenbahn-spielzeug-museum.de, www.eisenbahn-spielzeug-museum.de | 20 percent discount on the regular entrance fee |
| 06571 Wiehe, Modellbahn-Wiehe , Am Anger 19 Tel.: +49 (0) 3 46 72/8 36 30 info@movi-world.de, www.modellbahn-wiehe.de | Discount of 2.50 euro on the regular entrance fee |
| 09488 OT Schönfeld, Erz Mountains model railroad land – world of experience for young and old , Mittelweg 4, Thermalbad Wiesenbad, tel.: +49 (0) 37 33/59 63 57 info@modellbahnland-erzgebirge.de, www.modellbahnland-erzgebirge.de | On production of the Club card, 10 percent discount on the entrance fee for an adult or on the family ticket |
| 09548 Seiffen, Erz Mountains Toy Museum , Hauptstr. 73 Tel./fax: +49 (0) 3 73 62/82 39 info@spielzeugmuseum-seiffen.de, www.spielzeugmuseum-seiffen.de | Insiders pay the reduced entrance fee of 3 instead of 3.50 euro |
| 14728 Klessen, Toy Museum in Havelland e. V. , Schulweg 1 Tel.: +49 (0) 03 32 35/2 93 11, info@spielzeugmuseum-havelland.de www.spielzeugmuseum-havelland.de | Insiders pay 3 instead of 4 euro entrance fee |
| 16348 Wandlitz (Basdorf), Berlin Railroad Enthusiasts e. V. , An der Wildbahn 2 A Tel.: +49 (0) 3 33 97/7 26 56 info@berliner-eisenbahnfreunde.de, www.berliner-eisenbahnfreunde.de | Discount of 1 euro on the entrance fee to the museum. A discount of 2 euro is given on the purchase of a round trip ticket. |
| 17419 Zirchow, Miniature worlds – Fascination Airport , Flughafen Heringsdorf Island of Usedom, tel.: +49 (0) 1 71/5 58 43 98 www.airport-miniaturwelten.de | Discount of 0.50 euro on the entrance fee for an adult |
| 20355 Hamburg, Modelleisenbahn Hamburg e. V. , in the Hamburg Museum, Foundation for Museum of Hamburg History, Holstenwall 24 Tel.: +49 (0) 40/31 44 35, www.mehev.de | Discount of 1.50 euro on the entrance fee for adults to the Hamburg Museum |
| 20457 Hamburg, Miniature Wonderland , Kehrwieper 2/Block D Tel.: +49 (0) 40/36 09 11 57 info@miniatur-wunderland.de, www.miniatur-wunderland.de | Discount of 1 euro on the entrance fee for an adult |
| 20457 Hamburg, Hamburg Dungeon , Kehrwieper 2 (in the Speicherstadt) Tel.: +49 (0) 40/36 00 55 20 info@hamburgdungeon.de, www.thedungeons.com | Insider plus a maximum three further people receive a discount of 3 euro on the regular entrance fee |

TOP

TOP



| Name | Your Club benefits |
|--|---|
| 23769 Fehmarn (Burg), FeMoBa Fehmarn Model Railroad Inc. Landkirchener Weg 46, tel.: +49 (0) 43 71/8 89 99-0 info@bahnparadies.de, www.bahnparadies.de | Discount of 2 euro on the entrance fee for an adult |
| 25840 Friedrichstadt, Modellbahn-Zauber , Sönke Röckendorf e. K., Brückenstr. 18 Tel.: +49 (0) 48 81/5 25 info@modellbahn-zauber.de, www.modellbahn-zauber.de | 2 euro discount on the regular entrance fee |
| 28359 Bremen, Universum® Bremen , Wiener Str. 1a Tel.: +49 (0) 4 21/33 46-0 info@universum-sc.de, www.universum-bremen.de | Exhibition catalog "Universum® Bremen PfadFinder" as a gratis present |
| 29614 Soltau, Toy Museum Soltau , Poststrasse 7 Tel.: +49 (0) 51 91/8 21 82 info@spielmuseum-soltau.de, www.spielmuseum-soltau.de | Insiders receive a discount of 1 euro on the day ticket for an adult and 50 cents discount for a child |
| 33014 Bad Driburg, Model Railroad Show MO 1:87 , in Bad Driburg freight station Brakeler Str. 4, tel.: +49 (0) 52 53/93 40 84 kontakt@mo187.de, www.mo187.de | Discount of 10 percent on the entrance fee for an adult |
| 36041 Fulda, German Fire Service Museum , St. Laurentius-Strasse 3 Tel.: +49 (0) 6 61/7 50 17 deutsches-feuerwehr-museum@t-online.de, www.dfm-fulda.de | On production of their Club card, Insiders pay the reduced entrance fee of 2 euro instead of 3 euro |
| 36093 Künzell, Fulda-Künzell Model Railroad , Johann-Friedrich-Böttger-Str. 2 Tel.: +49 (0) 1 71/5 32 65 47 info@modelleisenbahn-fulda.de, www.modelleisenbahn-fulda.de | Discount of 1 euro on the entrance fee for an adult. 2 euro discount on the family ticket (2 adults + max. 2 children) |
| 36381 Schlüchtern, Model railroad in the Local History Museum Schlüchtern , Schlossstrasse 15, tel.: +49 (0) 66 61/85-7 24 or 85-7 50 info@modellbahn-im-museum.de, www.modellbahn-im-museum.de | On presenting their Club card, Club members pay 50 cents instead of 1 euro for an adult entrance fee |
| 40213 Düsseldorf, Film museum of the State capital of Düsseldorf , Schulstr. 4 Tel.: +49 (0) 2 11/8 99-22 32 (pay box from 11:00), -22 56 (register of guided tours) filmmuseum@stadt.duesseldorf.de, www.duesseldorf.de/kultur/filmmuseum | The Insider plus one further person pay the reduced entrance fee of 1.50 instead of 3 euro |
| 40863 Ratingen, German Postage Stamp Review , PO Box 10 82 54 Tel.: +49 (0) 21 02/5 06 75, info@deutsche-briefmarken-revue.de www.deutsche-briefmarken-revue.de | Introductory subscription (6 issues of this monthly publication) at the special rate of 8 euro (inland) or 11 euro (abroad) |
| 42659 Solingen, Schlossbauverein , Burg an der Wupper e. V., Schlossplatz 2 Tel.: +49 (0) 2 12/24 22-6 26 info@schlossburg.de, www.spur0-bergfried.de | Reduction of 1 euro on the museum entrance fee when visiting the historic railroad layout (Wednesdays and Saturdays) |
| 44879 Bochum, Bochum Railway Museum , Dr.-C.-Otto-Str. 191 Tel.: +49 (0) 2 34/49 25 16, info@eisenbahnmuseum-bochum.de www.eisenbahnmuseum-bochum.de | Entrance fee adults 6 instead of 6.50 euro, children (6-14 years) 3 instead of 3.50 euro |
| 45899 Gelsenkirchen, The Germany Express , Am Bugapark 1c Tel.: +49 (0) 2 09/5 08 36 60 kuevers@aol.com, www.der-deutschlandexpress.de | Discount of 30 percent on the regular entrance fee |
| 46047 Oberhausen, Model Railroad World Oberhausen , Zum Aquarium 2 Tel.: +49 (0) 2 08/88 48 67-0 modellbahnweltoberhausen@web.de, www.modellbahnwelt-oberhausen.de | Discount of 1 euro on the regular entrance fee for adults |
| 48531 Nordhorn, Nordhorn Model Railroad Enthusiasts , Oorder Weg 97 Tel.: +49 (0) 59 21/8 19 17 75 info@modellbahn-nordhorn, www.modellbahn-nordhorn.de | On presenting their Club card, Insiders pay 50 cents instead of 1 euro for an adult entrance fee |
| 49090 Osnabrück, Museum of Industrial Culture, Osnabrück , Süberweg 50a Tel.: +49 (0) 5 41/12 24 47 info@industriekultur-museumos.de, www.industriekultur-museumos.de | Insiders receive a Club card discount of 1.50 euro on the entrance fee for an adult or on the family ticket |
| 50739 Köln, Rheinisches Industriebahn Museum Köln e. V. , Longericherstrasse 249 Tel.: +49 (0) 24 21/7 08 40 94 or 01 62/7 42 34 62 sdorbach@web.de, www.rimkoeln.de | Insiders pay 2.50 euro instead of 4 euro entrance fee for an adult. Children pay 1.50 euro instead of 2 euro. |
| 51645 Gummersbach, Railroad Museum Dieringhausen , Hohler Str. 2 Tel.: +49 (0) 22 61/94 76 21 www.eisenbahnmuseum-dieringhausen.de | Discount of 20 percent on the entrance fee for an adult |
| 52538 Gangelt, Narrow-gauge Museum Selfkantbahn , Schierwaldenrath station Am Bahnhof 13 a, tel.: +49 (0) 24 54/66 99 or +49/(0) 2 41/8 23 69 info@selfkantbahn.de, www.selfkantbahn.de | Discount of 2 euro on the price of a round trip ticket for an adult |





| Name | Your Club benefits |
|---|---|
| 54290 Trier, Trier Toy Museum e. V. , Dietrichstr. 51 Tel.: +49 (0) 6 51/7 58 50 info@spielzeugmuseum-trier.de, www.spielzeugmuseum-trier.de | Discount of 25 percent on the regular entrance fee (family tickets excepted) |
| 57518 Betzdorf, Eisenbahnfreunde Betzdorf e. V. , Nizzaweg 25 Tel.: +49 (0) 2 71/2 34 63 58; +49 (0) 27 41/93 48 29, Mon to Fri. from 08:00 to 19:00 hotline@Eisenbahnfreunde-Betzdorf.de, www.eisenbahnfreunde-betzdorf.de | Discount of 10 percent on the travel price for an adult |
| 60314 Frankfurt/Main, Historische Eisenbahn Frankfurt e. V. , Intzestr. 34 Tel.: +49 (0) 69/43 60 93, info@HistorischeEisenbahnFrankfurt.de www.historischeeisenbahnfrankfurt.de | Discount of 10 percent on the regular ticket price for Hafenbahn trips |
| 61212 Bad Nauheim, Eisenbahnfreunde Wetterau e. V. Tel.: +49 (0) 60 32/92 92 29 draisine@gmx.de, www.ef-wetterau.de | Discount of 50 percent on the regular price of train trips |
| 61444 Steinbach (Taunus), JOFFI® GmbH – Simulator Events , Postfach 113 Tel.: +49 (0) 61 71/98 10 67 info@joffi.com, www.joffi.com | Experience the flight simulator at a special price |
| 64291 Darmstadt, Darmstadt-Kranichstein Railroad Museum , Steinstr. 7 Tel.: +49 (0) 61 51/37 64 01, Fax/Info-tel.: +49 (0) 61 51/37 76 00 info@museumsbahn.de, www.museumsbahn.de | Discount of 1 euro on the regular entrance fee |
| 64658 Fürth, Modellbahnschau Odenwald , Siemensring 9 Tel.: +49 (0) 1 72/6 25 25 95 info@modellbahnschau-odenwald.de, www.modellbahnschau-odenwald.de | Insiders pay 5.50 instead of 6 euro entrance fee for an adult |
| 65385 Rüdesheim-Assmannshausen, Rössler Line Shipping Lorcherstr. 34, tel.: +49 (0) 67 22/23 53 info@roesslerlinie.de, www.RoesslerLinie.de | Discount of 30 percent on the regular adult fares on all scheduled Rhine trips |
| 67346 Speyer, Technical Museum Speyer , Am Technik Museum Tel.: +49 (0) 62 32/67 08-0 www.museumspeyer.de | Insiders pay the advertised group entrance fee |
| 67403 Neustadt, Neustadt/Weinstrasse Railroad Museum , PO Box 10 03 18 Tel.: +49 (0) 63 21/3 03 90 (Museum & Kuckucksbahn) Tu. to Fri. from 09:00 to 13:00; info@eisenbahnmuseum-neustadt.de, www.eisenbahnmuseum-neustadt.de | Discount of 1 euro on the entrance fee to the museum for an adult |
| 68165 Mannheim, TECHNOSEUM (State Museum for Technology and Work) Museumsstr. 1, tel.: +49 (0) 6 21/42 98-9 www.technoseum.de | Discount of 2 euro on the entrance fee for an adult to the permanent exhibition |
| 70374 Stuttgart, UEF-Historischer Dampfschnellzug e. V. , Nürnberger Str. 151 To order tickets: tel.: +49 (0) 7 11/1 20 97 05 historischer-dampfschnellzug@t-online.de, www.schnellzuglok.de | 10 percent discount on the price of an adult's travel ticket |
| 70435 Stuttgart, Porsche-Museum , Porscheplatz 1, tel.: +49 (0) 7 11/911-20911, Tu. to Sun. and public holidays open 09:00 to 18:00. www.porsche.de/museum | On presentation of their Club card members only pay 4 euro instead of 8, including audio guide. |
| 72074 Tübingen, Boxenstop Auto and Toy Museum , Brunnenstr. 18 Tel.: +49 (0) 70 71/92 90 20 or 55 11 22 boxenstop@boxenstop-tuebingen.de, www.boxenstop-tuebingen.de | Insiders pay the group adult entrance fee of 4.50 instead of 5 euro. |
| 72160 Horb am Neckar, SVG Railroad Experience World Horb on the Neckar Isenburger Str. 16/2, Museumshalle, tel.: +49 (0) 74 51/55 57 50 horb@svgbmh.com, www.eisenbahn-erlebniswelt.de | Discount of 1 euro on the regular entrance fee |
| 73326 Deggingen, INTI Tours e. K. , Hauffstr. 15 Tel.: +49 (0) 73 34/95 97 41 info@inti-tours.de, www.inti-tours.de | Discount of 7 percent on the advertised rail trips |
| 74080 Heilbronn, South German Railroad Museum Heilbronn e. V. , Leonhardstr. 15 Tel.: +49 (0) 71 31/3 90 74 34 www.eisenbahnmuseum-heilbronn.de | Discount of 1 euro on the entrance fee for an adult |
| 74564 Crailsheim, DBK Historische Bahn e. V. , Horaffenstr. 32 Tel.: +49 (0) 7 00/32 58 01 06 www.dbk-historische-bahn.de | Discount of 10 percent on all shuttle trips organized by the DBK in the Wieslauf Valley and on DB lines |
| 74889 Sinsheim, Auto & Technik Museum Sinsheim , Museumsplatz Tel.: +49 (0) 72 61/9 29 90 www.museum-sinsheim.de | Insiders pay the advertised group entrance fee |





| Name | Your Club benefits |
|---|--|
| 77756 Hausach, Black Forest Model Railroad Hausach , Eisenbahnstr. 52a Tel.: +49 (0) 78 31/96 60 10 info@schwarzwald-modell-bahn.de, www.schwarzwald-modell-bahn.de | Discount of 50 cents on the entrance fee for an adult |
| 78170 Blumberg, Sauschwänzlebahn (Stadt Blumberg) , Postfach 120 Tel.: +49 (0) 77 02/47 76 04 info@sauschwaenzlebahn.de, www.sauschwaenzlebahn.de | Please ask the organizer for details of your Insider benefit |
| 78628 Rottweil, Railroad Enthusiasts Zollernbahn e. V. , Bahnhof 10/1 Tel.: +49 (0) 7 41/17 47 08 18 www.eisenbahnfreunde-zollernbahn.de | Discount of 25 percent on the price of an individual passenger ticket for trips organized by the association |
| 79859 Schluchsee, Model Railroad Center Schluchsee , Eisenbreche 4 Tel.: +49 (0) 76 56/98 84 01 info@modellbahn-schluchsee.de, www.modellbahn-schluchsee.de | Insiders receive a 50 cent discount on the entrance fee for an adult, 1.50 euro on a family ticket |
| 80687 Munich, BigXtra Touristik GmbH , Landsberger Str. 304 Service hotline: +49 (0) 89/44 44 63-1 55 www.bigxtra.de | 5 percent discount on all advertised offers |
| 82031 Geiseltasteig, Bavaria Filmstadt , Bavariafilmplatz 7 Tel.: +49 (0) 89/64 99 20 00 filmstadt@bavaria-film.de, www.filmstadt.de | Insiders receive 1 euro discount on the entrance fee and the guided tour, 2 euro on family tickets |
| 83395 Freilassing, Loco World Freilassing , Westendstr. 5 Tel.: +49 (0) 86 54/77 12 24 (Mon. to Fri. 08:00 to 12:00) or 77 12 25 lokwelt@freilassing.de, www.lokwelt.freilassing.de | Insiders pay a reduced entrance fee of 3.50 instead of 4.50 euro |
| 85716 Unterschleißheim, MICHEL Schwaneberger Verlag , Ohmstr. 1 Tel.: +49 (0) 89/3 23 93 02 www.briefmarken.de | Discount of 20 percent when ordering the MICHEL online catalog, and on all MICHEL software products |
| 86159 Augsburg, Bahnpark Augsburg , Firnhaberstr. 22c Tel.: +49 (0) 8 21/45 04 47-100 service@bahnpark-augsburg.eu, www.bahnpark-augsburg.eu | Club members receive a discount of 2 euro on all regular entrance fees |
| 86720 Nördlingen, Bavarian Railroad Museum Nördlingen , Am hohen Weg 6a Tel.: +49 (0) 90 83/3 40, info@bayerisches-eisenbahnmuseum.de www.bayerisches-eisenbahnmuseum.de | Discount of 50 percent on the regular entrance fee |
| 87534 Oberstaufen, Mini-World Oberstaufen , Wengen 15 Tel.: +49 (0) 83 86/96 07 11 info@miniwelt-oberstaufen.de, www.miniwelt-oberstaufen.de | 50 cents discount on the regular entrance fee |
| 87545 Burgberg-Erzflössle, Mo-Lok Model Railroad Show , Sonthofener Str. 38 Tel.: +49 (0) 83 21/2 21 80 info@mo-lok.de, www.mo-lok.de | Please ask the organizer for details of your Insider benefit |
| 87616 Marktoberdorf-Thalhofen, Allgäu Railroad Museum & Shop , Am Hörtnagel 2, Tel.: +49 (0) 83 42/91 61 60, eisenbahnmuseum-allgaeu@web.de, www.eisenbahn-museum-allgaeu.de | Insiders pay 3 instead of 4 euro entrance fee to the museum |
| 88416 Ochsenhausen, Öchsle Railroad Operating Company Tel.: +49 (0) 73 52/92 20 26 info@oechsle-bahn.de, www.oechsle-bahn.de | Discount of 20 percent on the regular price of tickets for the Öchsle narrow-gauge railroad |
| 89188 Merklingen, Model Railroad Show Merklingen , Siemensstr. 2 Tel.: +49 (0) 73 37/92 31 94 info@modellbahnshow.de, www.modellbahnshow.de | Discount of 1 euro for adults and children (6-15 years), family discount 3 euro (2 adults plus all children) |
| 89537 Giengen/Brenz, "The World of Steiff" , Margarete-Steiff-Platz 1 Tel.: +49 (0) 18 05/13 11 01 die-welt-von-steiff@steiff.de, www.steiff.de | Insiders pay the reduced entrance fee of 7 instead of 8 euro; the family ticket is available for 16 instead of 20 euro |
| 90443 Nuremberg, DB Museum in the Nuremberg Museum of Transport , Lessingstr. 6 Tel.: +49 (0) 9 11/2 19 24 28, info@db-museum.de www.db-museum.de | 1 euro discount on the entrance fee for an adult |
| 90599 Dietenhofen, Miniature World of Experience , Langenzenner Strasse 10 Tel.: +49 (0) 98 24/92 31 20 info@miniatur-erlebniswelt.de, www.miniatur-erlebniswelt.de | 1 euro discount on the entrance fee |
| 91541 Rothenburg o. d. Tauber, Dolls and Toys Museum , Hofbronnengasse 13 Tel.: +49 (0) 98 61/73 30, info@spielzeugmuseum.rothenburg.de www.spielzeugmuseum.rothenburg.de | Insiders pay the reduced entrance fee of 3.50 euro |





| Name | Your Club benefits |
|--|--|
| 91757 Treuchtlingen, Miniature Land Treuchtlingen , Elkan-Naumburgstrasse 35 Tel.: +49 (0) 91 43/83 78 51 mail@miniaturland-pappenheim.de, www.miniaturland-treuchtlingen.de | On production of their Club card, Insiders pay 4 instead of 5 euro. Children up to 12 years old pay 2 instead of 3 euro. |
| 94032 Passau, Passauer Railroad Enthusiasts e. V. , Haitzinger Str. 12 Tel.: +49 (0) 8 51/9 66 39 71 pef@passauer-eisenbahn.de, www.passauer-eisenbahn.de | 20 percent discount on all special trains organized by the PEF |
| 95339 Neuenmarkt, German Steam Locomotive Museum , Birkenstr. 5 Tel.: +49 (0) 92 27/57 00 ddm@dampflok-museum.de, www.dampflok-museum.de | Please ask the organizer for details of your Insider benefit |
| CinemaxX – the film palace www.cinemaxx.de | Insiders receive a discount of 30 percent when obtaining a CinemaxX card |

TOP

Abroad

| | |
|--|--|
| 2231 Strasshof, Railroad Museum Strasshof , Sillerstr. 123 (A) Tel.: +43 (0) 22 87/30 27 11 (Tu., Wed., Thur. 10:00 to 13:00), office@eisenbahn-museum-heizhaus.com, www.eisenbahnmuseum-heizhaus.com | Discount of 80 cents on regular admission prices |
| NEW 2320 Schwechat, Railroad Museum Groß Schwechat , Sendnergasse 26, (A) Tel.: +43 (0) 6 76/4 75 75 97 info@eisenbahnmuseum.at, www.eisenbahnmuseum.at | Discount 2 euro on the admission prices for adults, and for children 1 euro. On the family ticket, discount of 3 euro |
| NEW 4843 Ampflwang im Hausruckwald, Loco park Ampflwang , Bahnhofstr. 29, (A) Tel.: +43 (0) 6 64/5 08 76 64, 10 – 17:00 ampflwang@oegeg.at, www.oegeg.at | Club members receive a discount of 1 euro on the entrance price and only pay 14 euro instead of 16 euro for a combined ticket (Loco park + museum rail trip) |
| 5020 Salzburg, Salzburg Toy Museum , Bürgerspitalgasse 2 (A) Tel.: +43 (0) 6 62/6 20 80 83 00 www.salzburgmuseum.at | Discount of 50 cents on the regular adult entrance fee |
| 6020 Innsbruck, Tyrol Local Railroads Museum , (A) Pater-Reinisch-Weg 4, tel.: +43 (0) 6 64/1 11 60 01 (Herr Lassnig) w.duschek@gmx.at, www.tmb.at | Insiders pay the advertised group entrance fee when visiting the museum |
| 6870 Bezauf, Bregenzerwaldbahn "Wälderbähnle" , Verein Bregenzerwald Museum (A) Railroad, Bahnhof 147, tel.: +43 (0) 6 64/4 66 23 30 info@waelderbaehnle.at, www.waelderbaehnle.at | Discount of 1 euro on the price of an adult single ticket |
| 1897 Le Bouveret, Swiss Vapeur Parc (CH) Tel.: +41 (0) 2 44 81 44-10 info@swissvapeur.ch, www.swissvapeur.ch | Discount of 25 percent on the regular entrance fee |
| 6850 Mendrisio, Galleria Baumgartner , Via Stefano Franscini 24 (CH) Tel.: +41 (0) 91/6 40 04 00 info@gb-trains.ch, www.galleriabaumgartner.ch | Discount of 2 CHF on the regular entrance fee |
| 8808 Pfäffikon (Schwyz), Alpamare Lake Zurich , Gwattstr. 12 (CH) Tel.: +41 (0) 55/4 15 15 15 alpamare@alpamare.ch, www.alpamare.ch | The Insider plus max. 3 accompanying persons receive a discount of 15 percent on the respective entrance fees |
| 8914 Aeugstertal, PEGASUS SMALL WORLD , Habersaat 3 beim Türlensee (CH) Tel.: +41 (0) 17 76 22 77 smallworld@bluewin.ch, www.spielzeug-museum.ch | Admission is free |
| 68200 Mulhouse, Cité du Train , 2, rue Alfred de Glehn (F) Tel.: +33 (0) 3 89 42 83 33 message@collection-schlumpf.com, www.citedutrain.com | Insiders receive discount on the entrance fee |
| 5000 Odense, The Danish Railway Museum , Dannebrogsgade 24 (DK) Tel.: +45 (0) 66 13 66 30 jbmuseum@dsb.dk, www.eisenbahnmuseum.dk | The Insider plus max. 2 adults and 3 children receive a discount of 25 percent on the respective entrance fees |

TOP

Important: Please always take your Club card with you to the events to verify your Club membership.

Photos (l. to r.): Railroad Museum Schwechat, Verein Bregenzerwald Museum Railroad, Miniature World of Experience Dietenhofen, Miniature park "The Miniature Saxonian Switzerland", Loco park Ampflwang, Miniature Wonderland Hamburg, The Danish Railway Museum



Dresdner Parkeisenbahn

NEW

Palaces, castles and gardens of Saxony
Grosser Garten, 01219 Dresden, Germany
Tel.: +49 (0) 3 51/44 56-795
E-mail: parkeisenbahn@schloesserland-sachsen.de
Homepage: www.dresdner-parkeisenbahn.de

» **Club benefit:** on presentation of their Club card, Club members obtain a concession of 10 % off all published fares.

Running times 2012: Season opening on 5 April, 15:00 to 18:00. 6 April to 30 September, Tuesday to Sunday and on public holidays 10:00 to 18:00. 1 to 28 October Sat., Sun. and public holidays 10:00 to 18:00. Further information is also available on the Internet.

The noise of wheels on rails, loud locomotive signals and clouds of smoke beneath the treetops: many visitors to the Grosser Garten in Dresden listen with amazement when the Dresden Park Railroad announces itself from afar. The miniature railroad with its 381 mm (15") gauge carries many thousands of passengers large and small on a trip round the park in the summer months. The odd thing about this railroad is that the Dresdner Parkeisenbahn is operated by children and young people in their free time. As was normal on the former "Pioneer railroads", children and young people all take a turn as inspectors, supervisors or train attendants – the only adults are engineers and station managers. For over 60 years now, the steam locomotives "Lisa" and "Moritz" and two battery electric locos have been operating the fascinating 5.6-kilometer line (3 ½ miles) right in the center of the city. On the way round, the trains call at five stations, including one at the zoo, one at the impressive Palais and one at the Carolsee, which might tempt you to a romantic gondola trip after your tour of the garden.

Photos: Dresdner Parkeisenbahn

Stage highlights for Insiders

Fog rockets, daring stunts and breathtaking effects: at Andrew Lloyd Webber's frenetic roller skate musical "Starlight Express" the audience is at the Locomotive World Championships live. In unique costumes the cast sing and dance in Webber's successful musical "Cats". The four-legged competitors entertain with world-famous ballads and a special brand of charm. Another highlight of the live entertainment is Hape Kerkeling's new musical comedy "Kein Pardon". When a perfectly normal Ruhr family with great dreams comes into contact with the glamorous world of television, the laughter muscles go to work. These impressive shows can be enjoyed at special prices by Club members.

These musicals are cheaper for Club members:

| Musical | Venue | Validity |
|-------------------|----------------------------------|------------------------|
| Starlight Express | Starlight Express Theater Bochum | All dates |
| Cats | Vienna | 29 Jan. – 28 May 2012 |
| | Stuttgart | 03 Nov. – 9 Dec. 2012 |
| | Nuremberg | 15 Dec. – 13 Jan. 2013 |
| Kein Pardon | Capitol Theater Düsseldorf | general program dates |

How to receive the Club benefits:

Märklin Insider Club members receive a discount of 10 percent on the net price of tickets by quoting the customer PIN 15862. Tickets and info under +49 (0) 2 11/7 34 41 20. Prices for tickets to Starlight Express are between 29.90 and 94.90 euro, for Kein Pardon between 24.90 and 79.90 euro, and for Cats between 19.90 and 89.90 euro – all prices are subject to advance booking fee and 2 euro system fee. Information on the musicals can also be obtained under: www.kartenkaufen.de



Competition: prize winner is the E 17 H0 Club model



Top quality convinces jury of experts

Once again, the Märklin group has been honored on account of its quality. At the most important Trade Fair in the sector, the "Euroguss", the locomotive body of the E17 H0 Club model was selected for a prize award. The jury paid tribute to the complex and precise tool design and a production realized without burrs or extensive finishing work. "Furthermore," the jury continued,

"the exceptionally high casting standard for the delicate shapes and the very good surface technique are to be specially commended". Dr. Sabina Grund (right) and Dirk Böttcher (left) from the Initiative Zink presented the Certificate to Norbert Schmidt (second from left), manager of the die-casting department at Märklin and Jochen Marquardt from the foundry.