



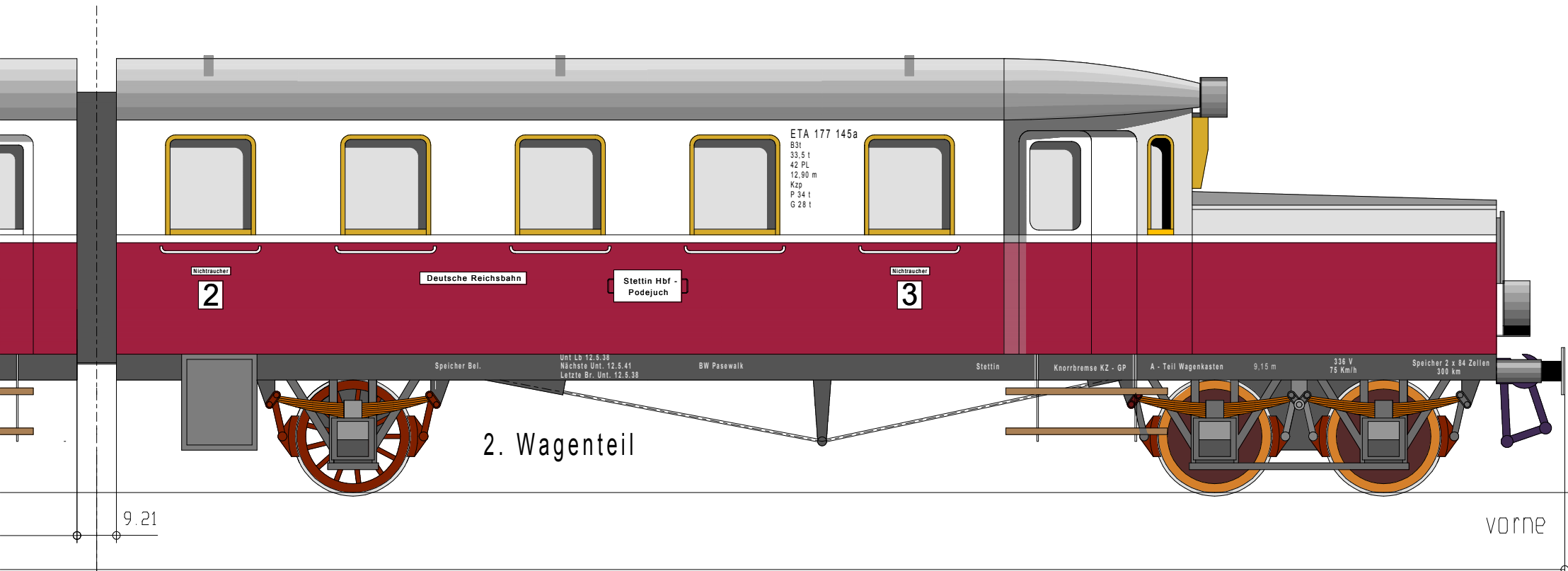
Ansicht verkleinert auf 0.8



2. Wagenteil

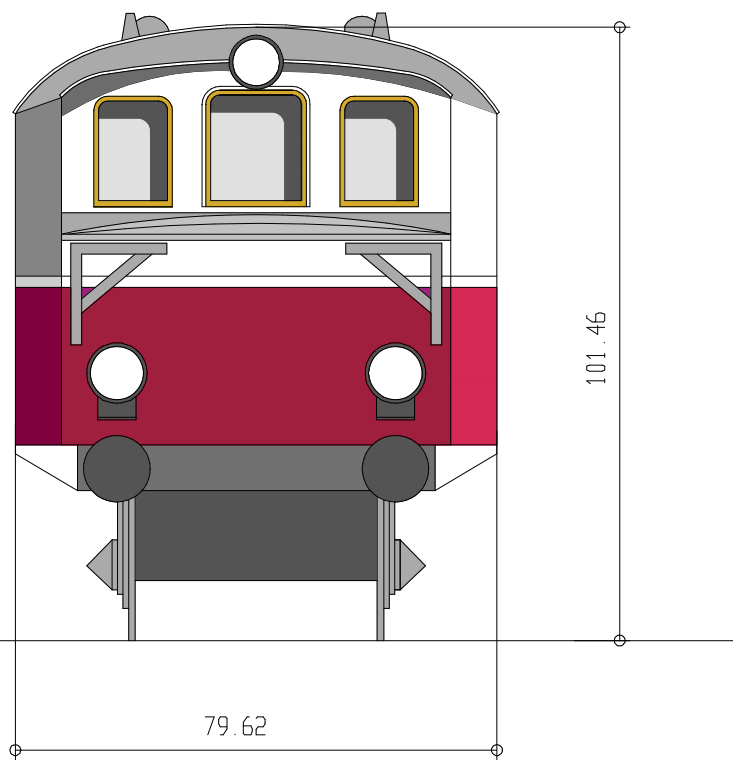
© 2011 Albrecht Pirling / Rinteln
 Modelmaßstab 1:38

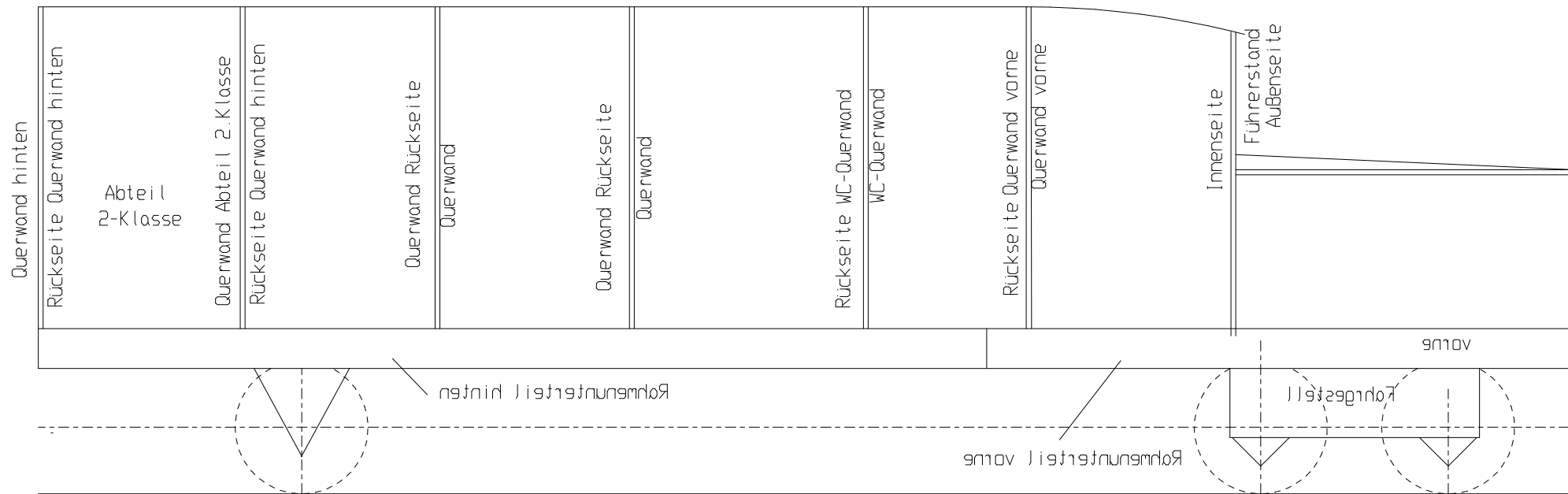
Ansicht verkleinert auf 0,8



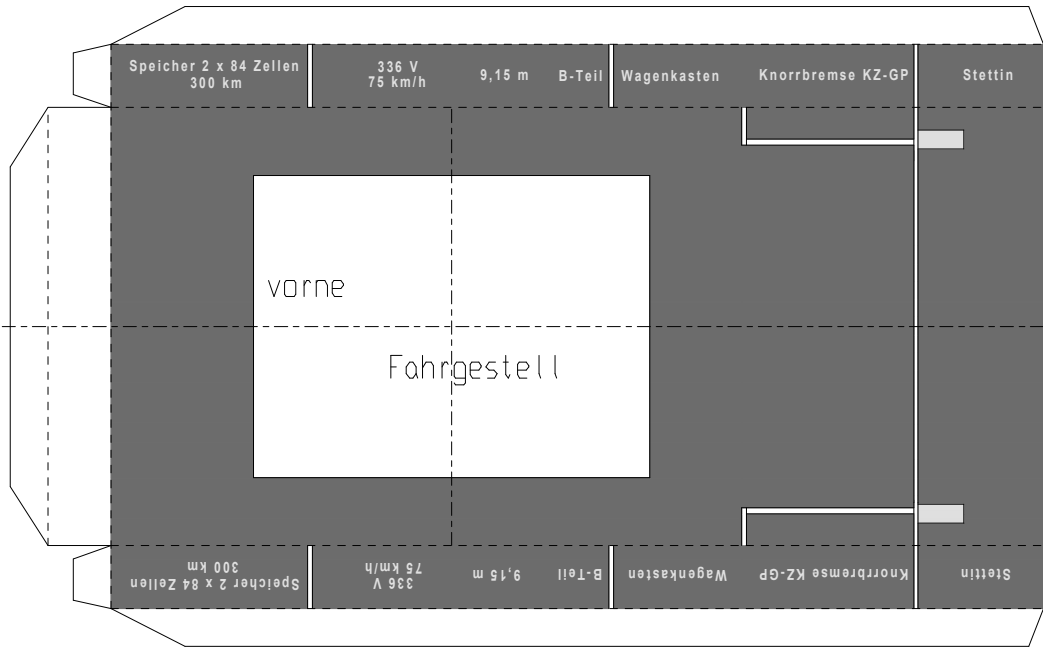
38

Makropunkt

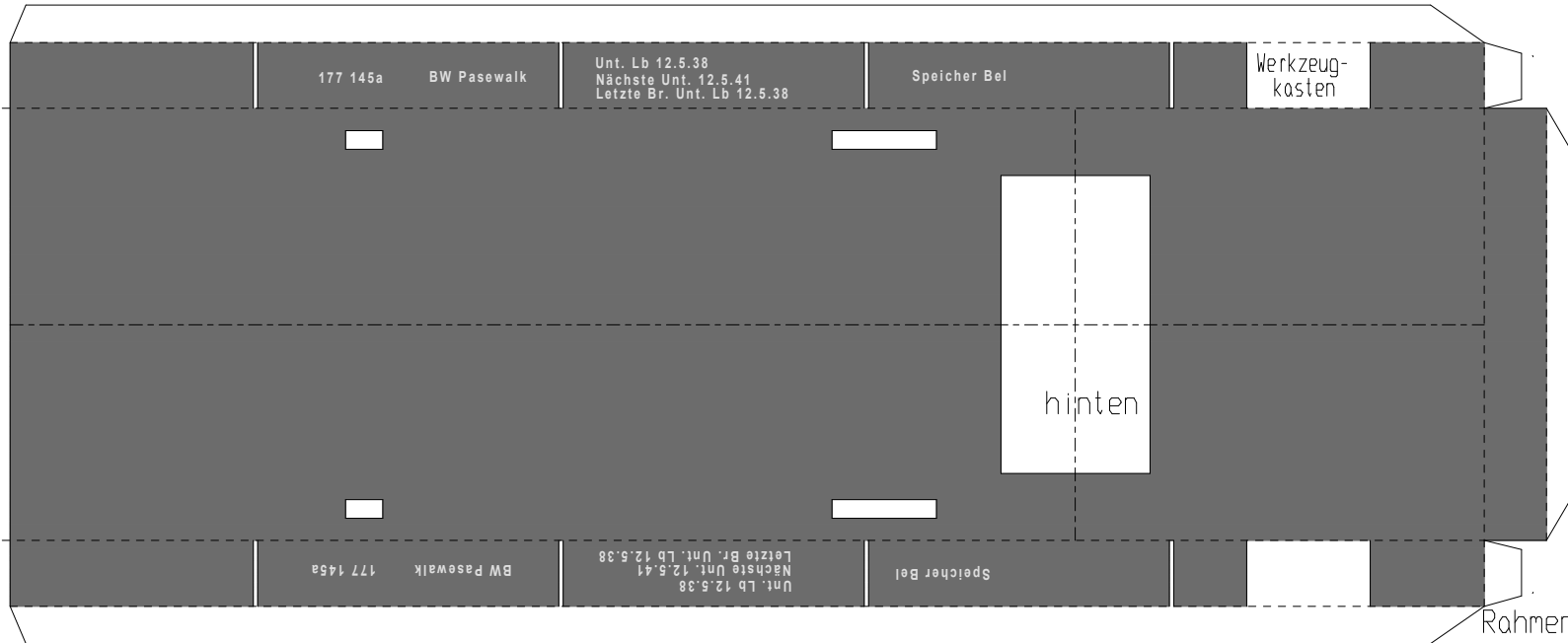
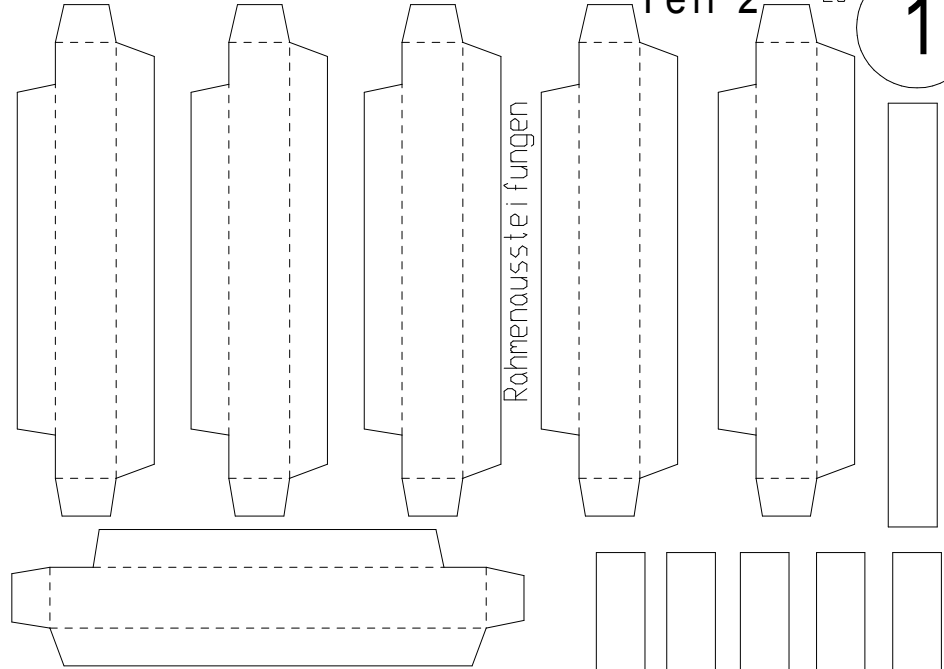




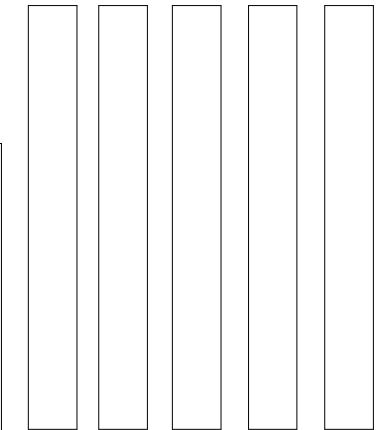
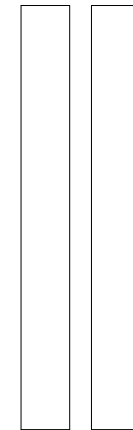
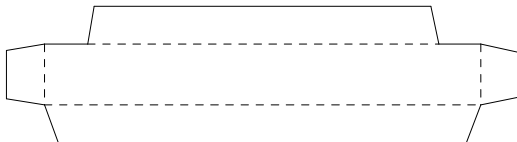
Längsschnitt



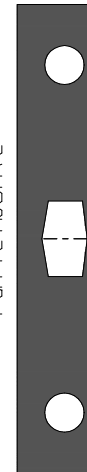
Rahmenunterteil vorne



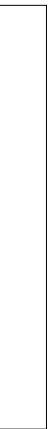
Rahmenunterteil hinten

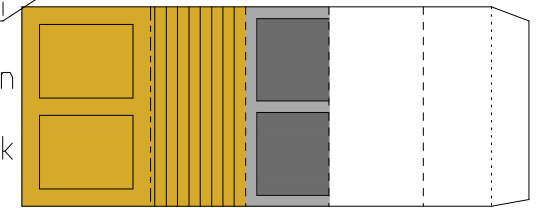
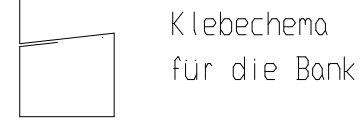
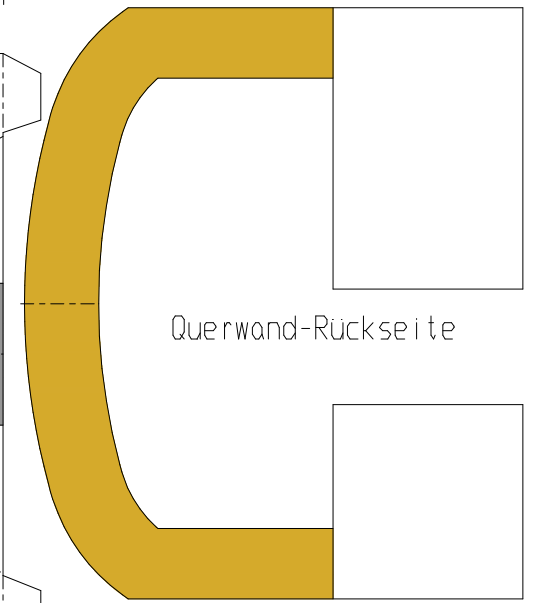
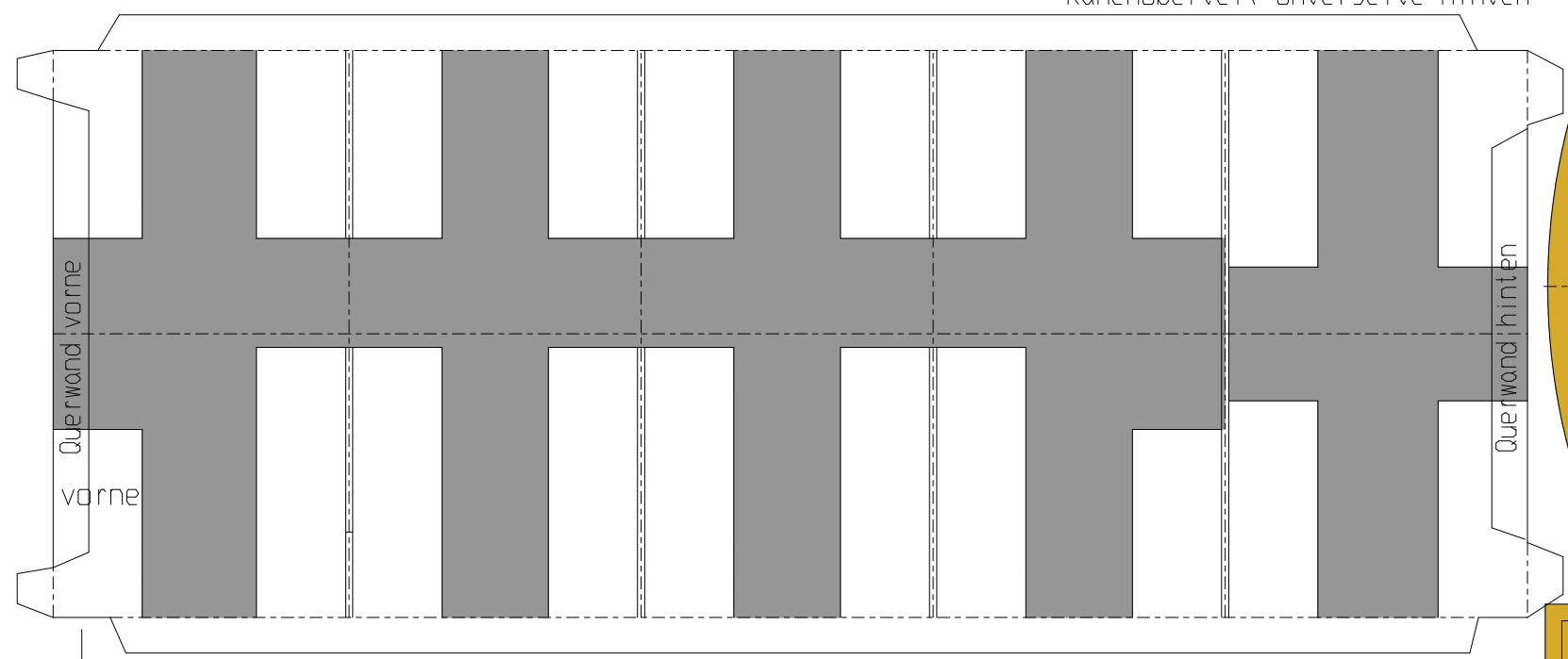
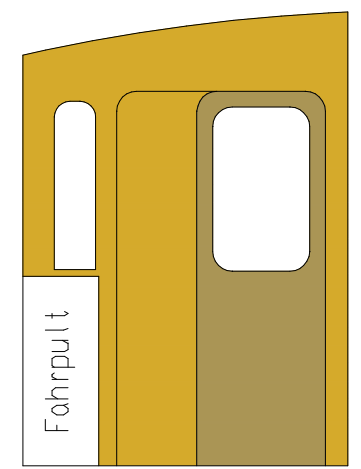


Pufferbohle

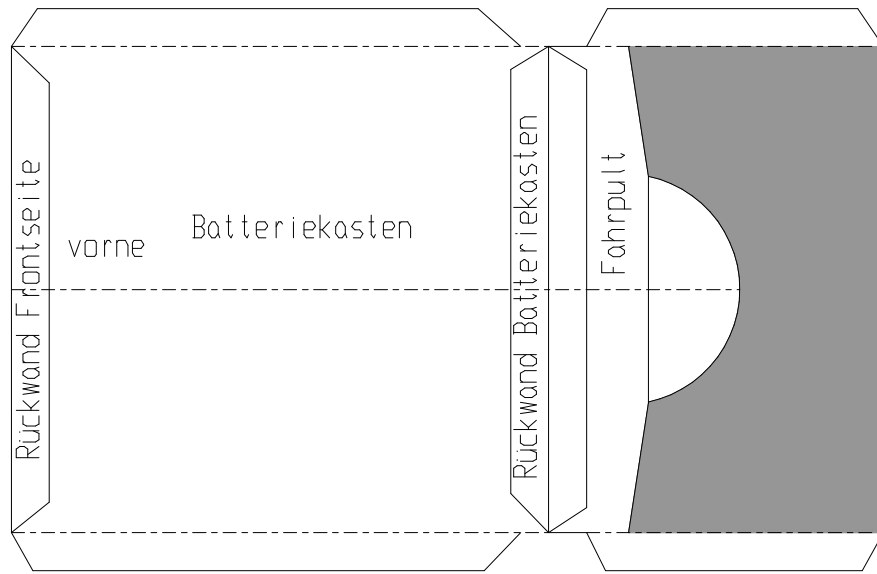


Verstärkung der Rahmenaussteifungen





Rückseite
Querwand vorne



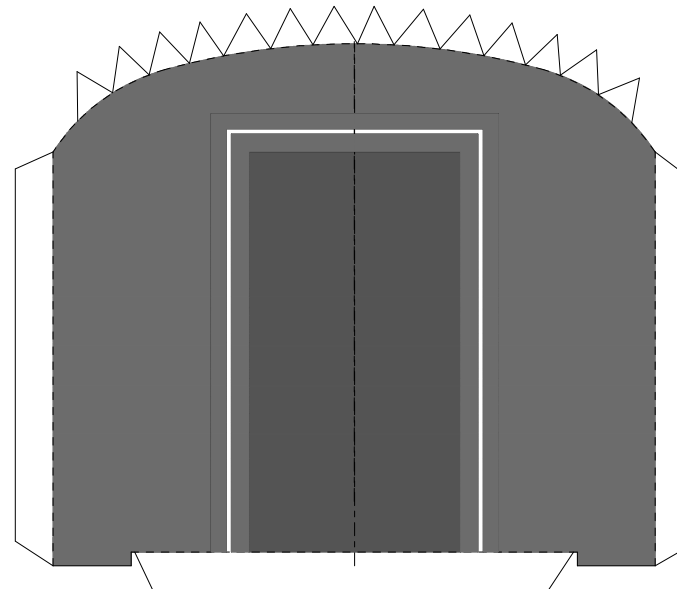
Ramenaberteil Oberseite vorne



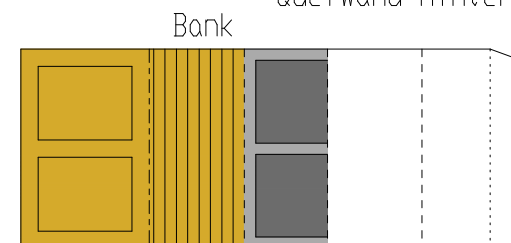
Ramenaberteil Unterseite vorne



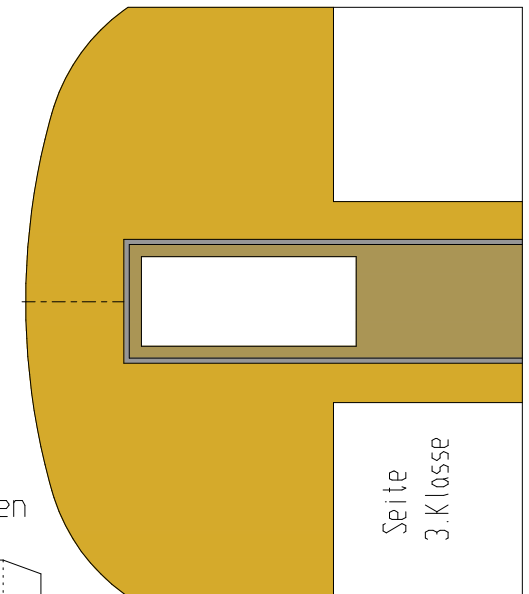
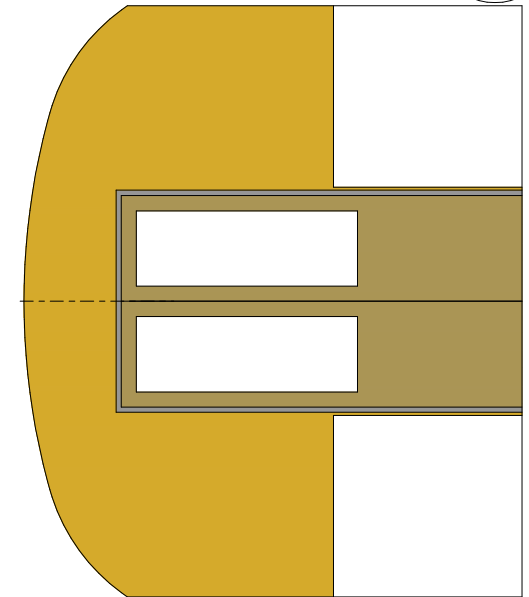
Verbindungsbalg



Querwand hinten



Bank

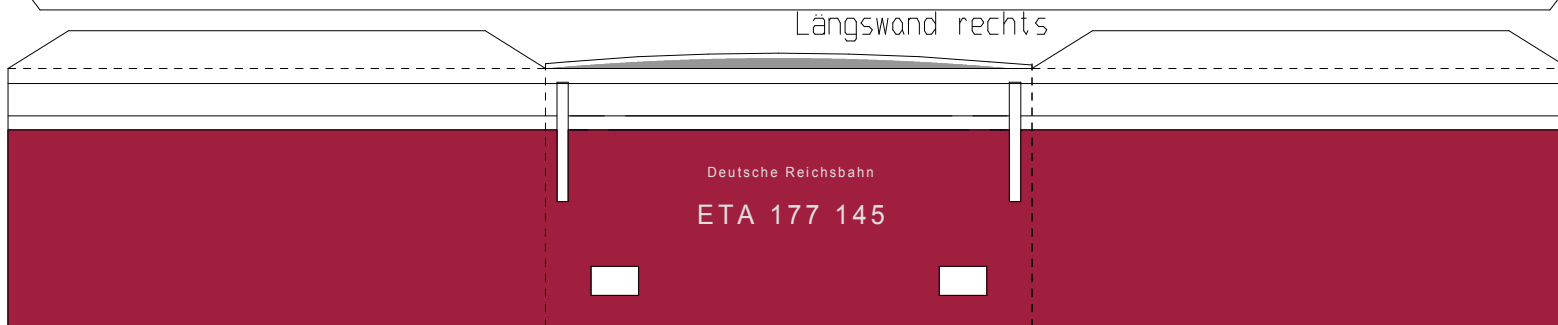
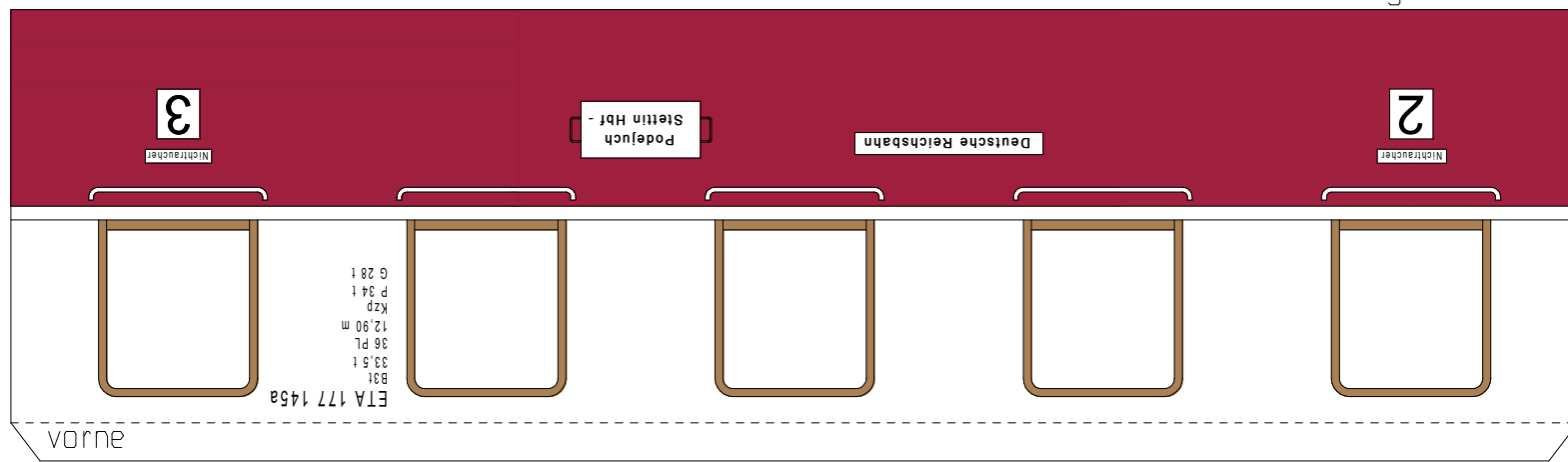
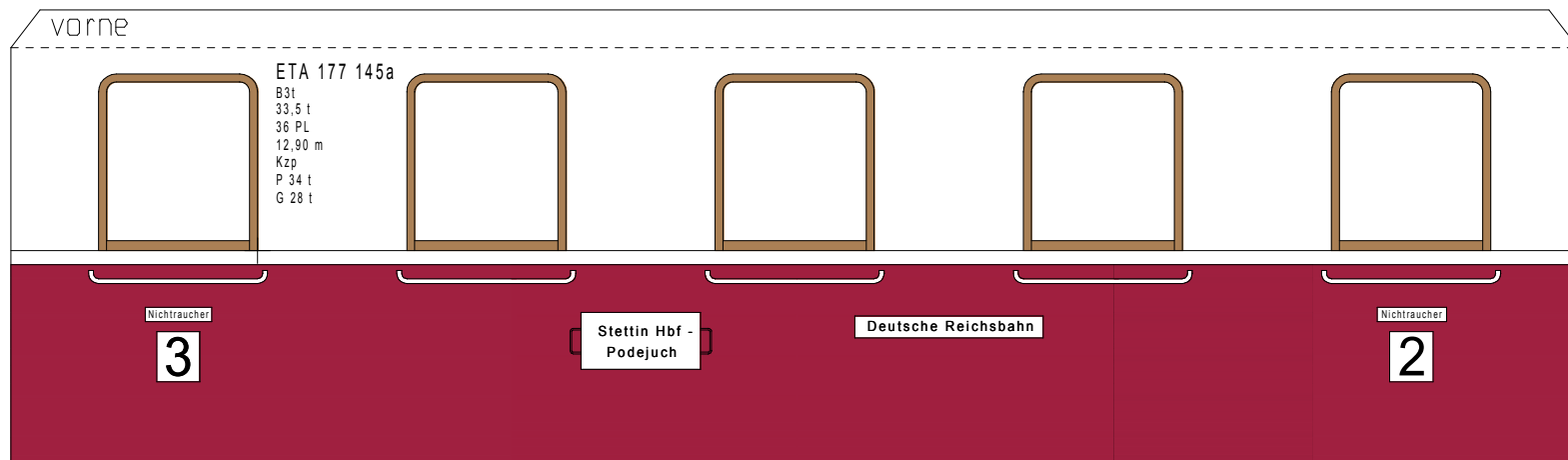


Rückseite Querwand hinten

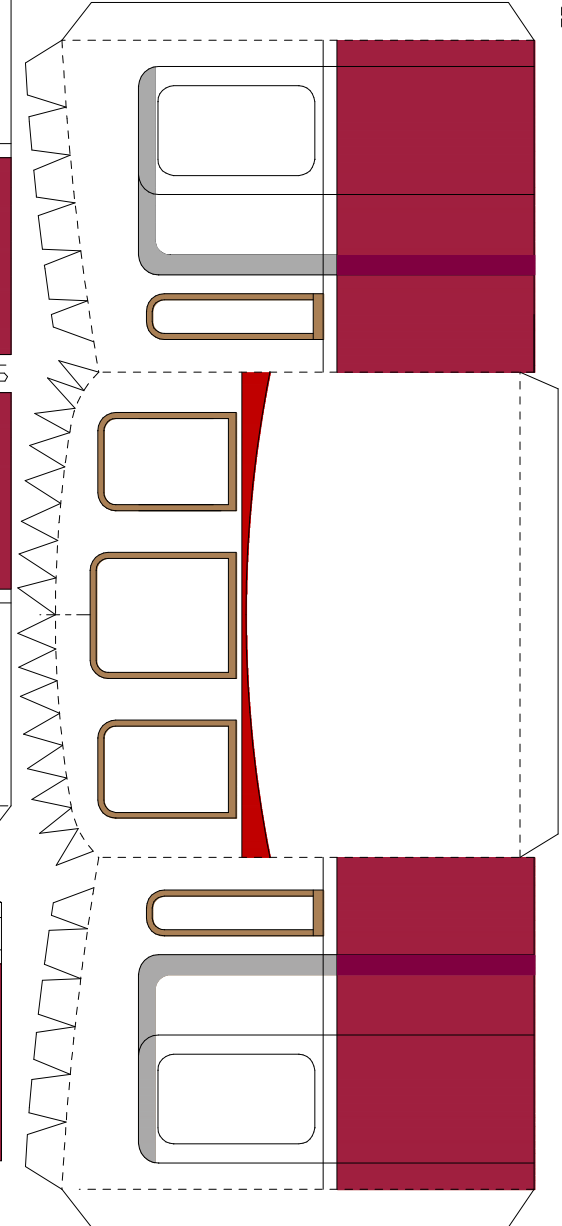
Konsolen



Seite
3. Klasse



Führerstand-Vorbau

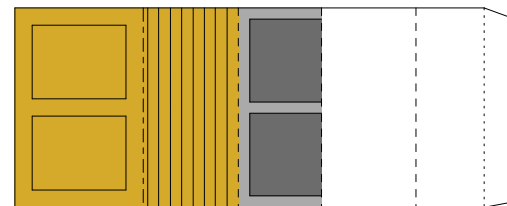


Führerstand-Außenseiten

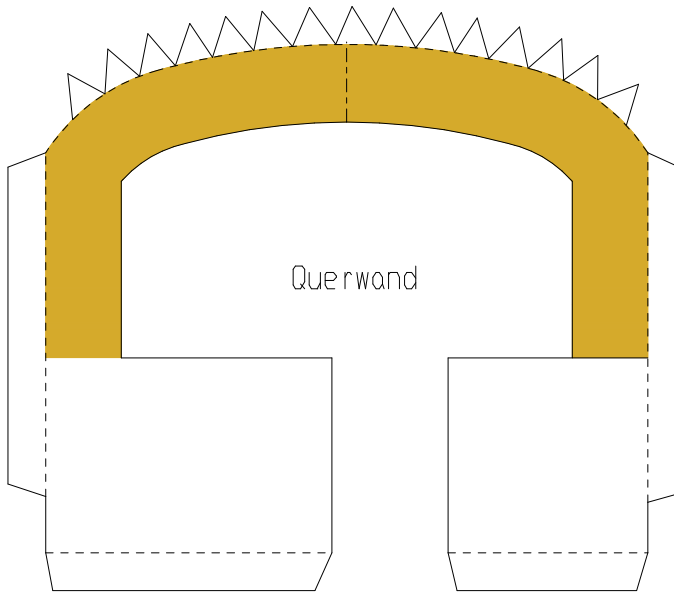
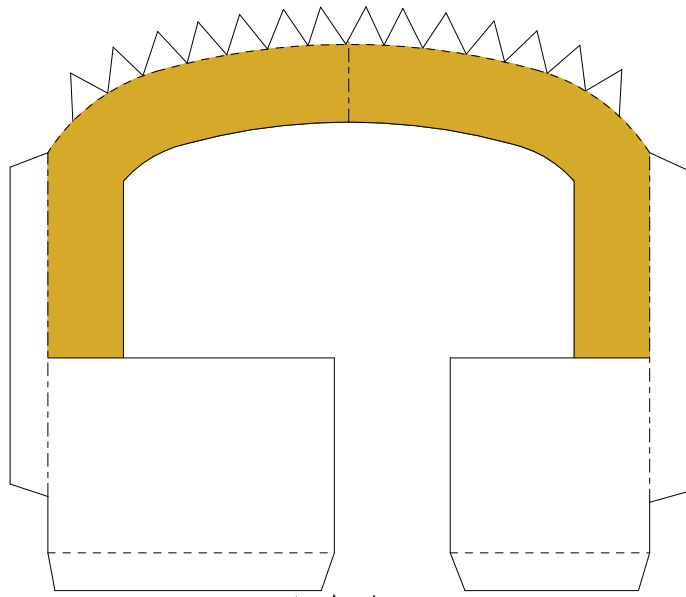
Verstärkung der
Rückwand Frontseite

Verstärkung der
Queraussteifung

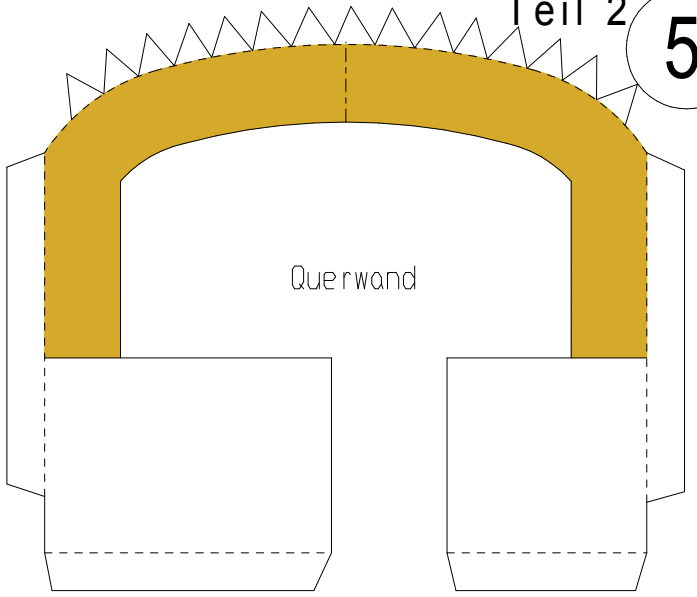
Batteriekasten



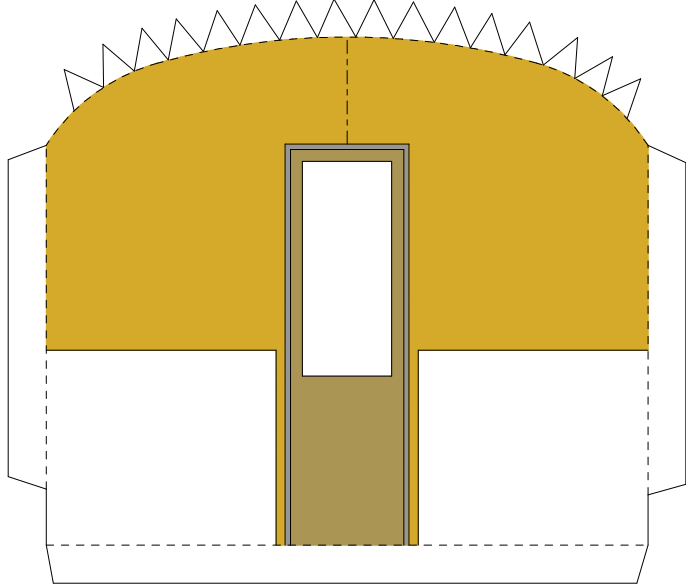
Bank



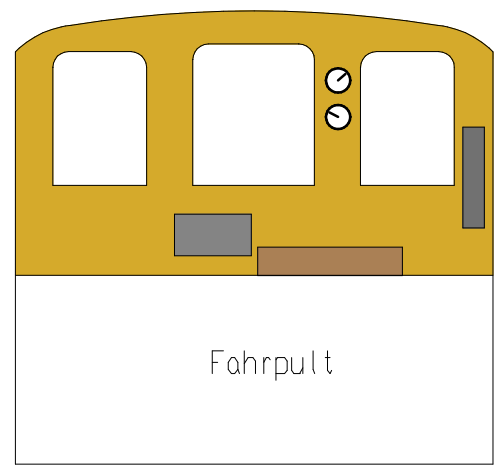
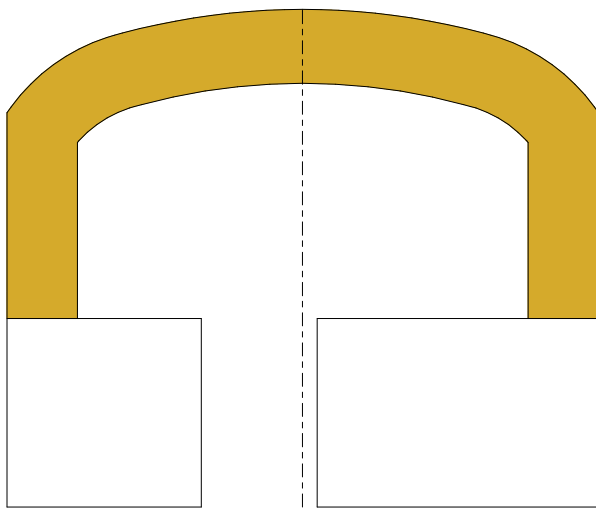
Querwand



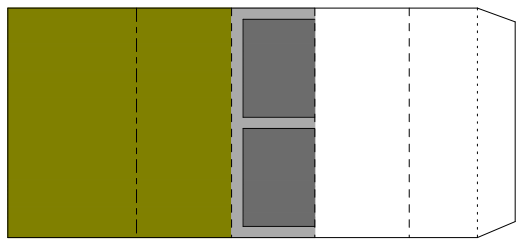
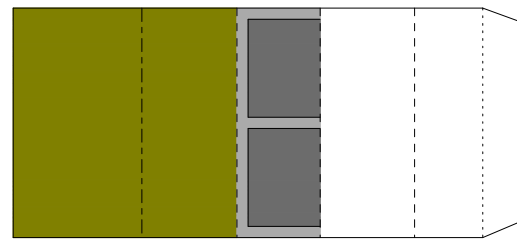
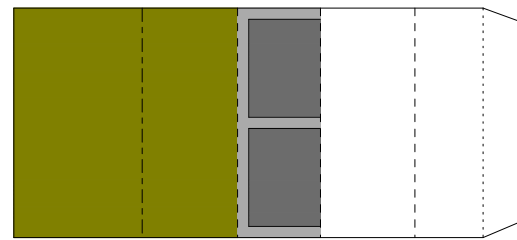
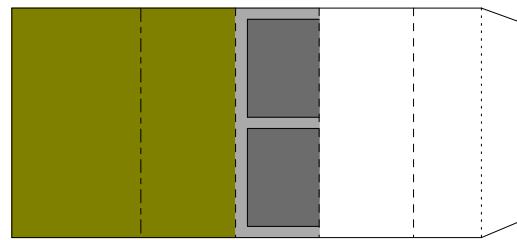
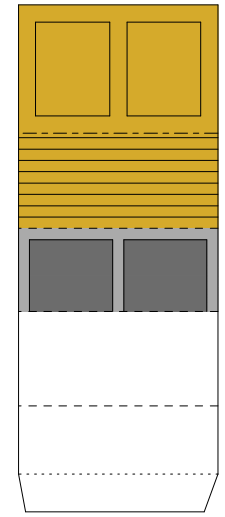
Querwand



2. Querwand Abteil 2.Klasse



Führerstand-Innenseite



Bänke 2.Klasse

Teil 2

Rückwand Frontseite

Queraussteifung Batteriekasten

Fensterseiten innen recht

Fensterseiten innen links

Führerstand-Innenseite

Fahrpult

End-Querwand Rückseite

2. Klasse

2. Klasse

Querwand-Rückseite

